



SAVANNA Luxury Tents & Habitats



SAVANNA
Luxury Tents & Habitats

Page

1. About us.....	03-07
2. Processes.....	08-14
3. Guest Suites.....	15-29
4. Guest Tents.....	30-50
5. Guest Units.....	51-57
6. Main Areas.....	58-64
7. Examples.....	65-69
8. Facilities Tents.....	70-72
9. Auxiliary Services.....	73-77
9. Social Media Links.....	78

SAVANNA Luxury Tents & Habitats

Welcome to Savanna Luxury Tents & Habitats, where we are dedicated to designing and crafting exceptional bush lodges that redefine the concept of luxury in the wilderness. With our expertise in creating exquisite tented accommodations and habitats, we bring a unique and unparalleled touch to your next bush lodge project. Let us transform your vision into a breathtaking reality, where luxury and nature converge in perfect harmony.

Members of our board of directors (Savanna Lodge Development) have been involved with the construction, at senior management or director level, on the follow project (amongst others):

Kigali International Airport, Rwanda

Radisson Hotel, Rwanda

Bisate Lodge, Rwanda

Marriot Hotel, Rwanda

Serena Hotel, Rwanda

Epic Hotel, Rwanda

Ubumwe Grande Hotel, Rwanda

Nyungwe Forest Lodge, Rwanda

Juba International Airport, South Sudan

Flat Island Resort, Mauritius

Duma Tau Lodge, Botswana

Trojan Nickle Mine, Zimbabwe

Intare Conference Centre, Rwanda

Kariftu Abra Minch, Ethiopia

Private Concession Camp, Kruger Park, South Africa

South African National Parks, Lower Sabi, South Africa

Feather Down Lodge, United Kingdom

Boerenbed, Belgium

ABOUT US



Marc
du Plessis



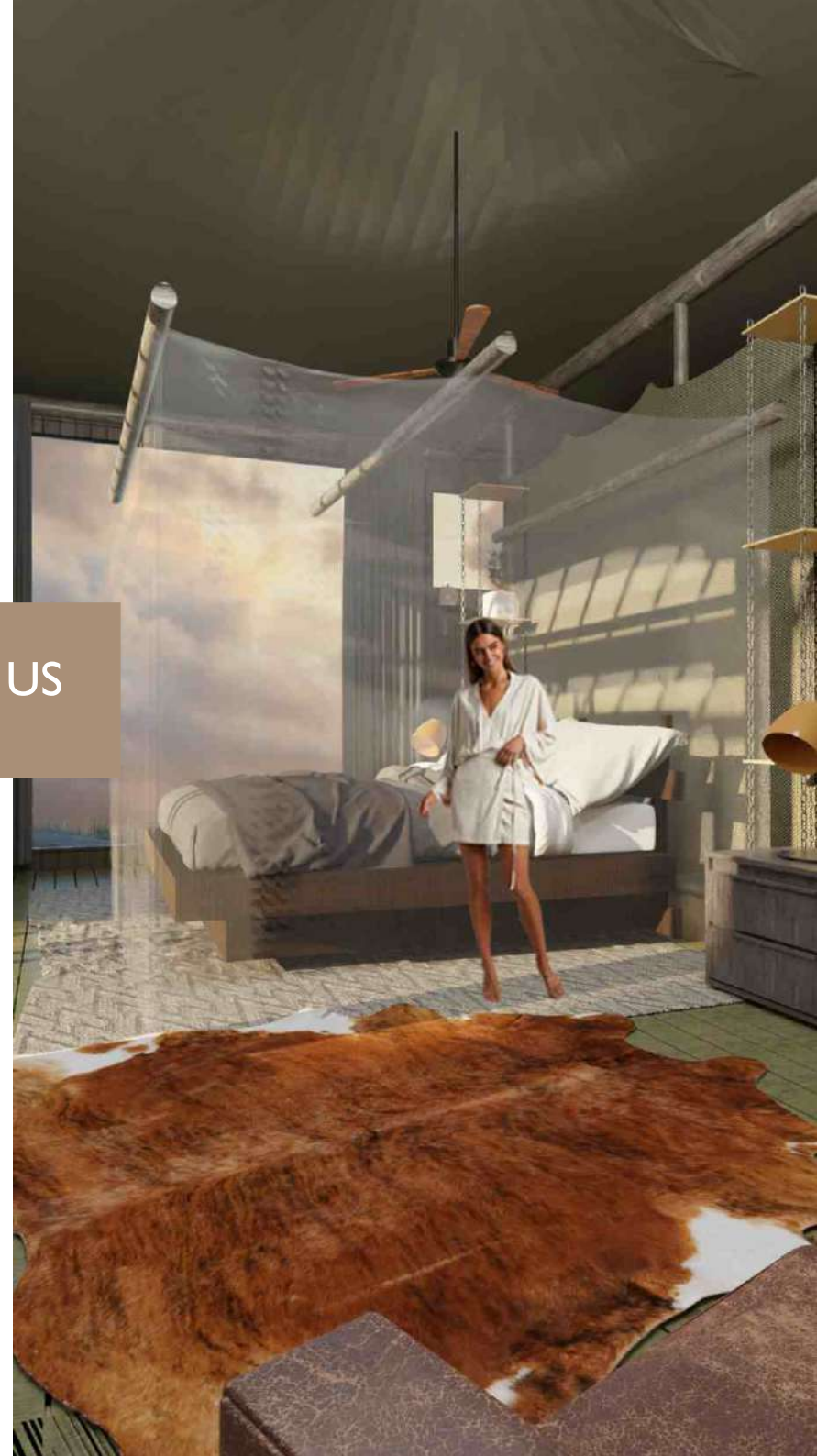
Dave
Marcussen



George
Macdonald



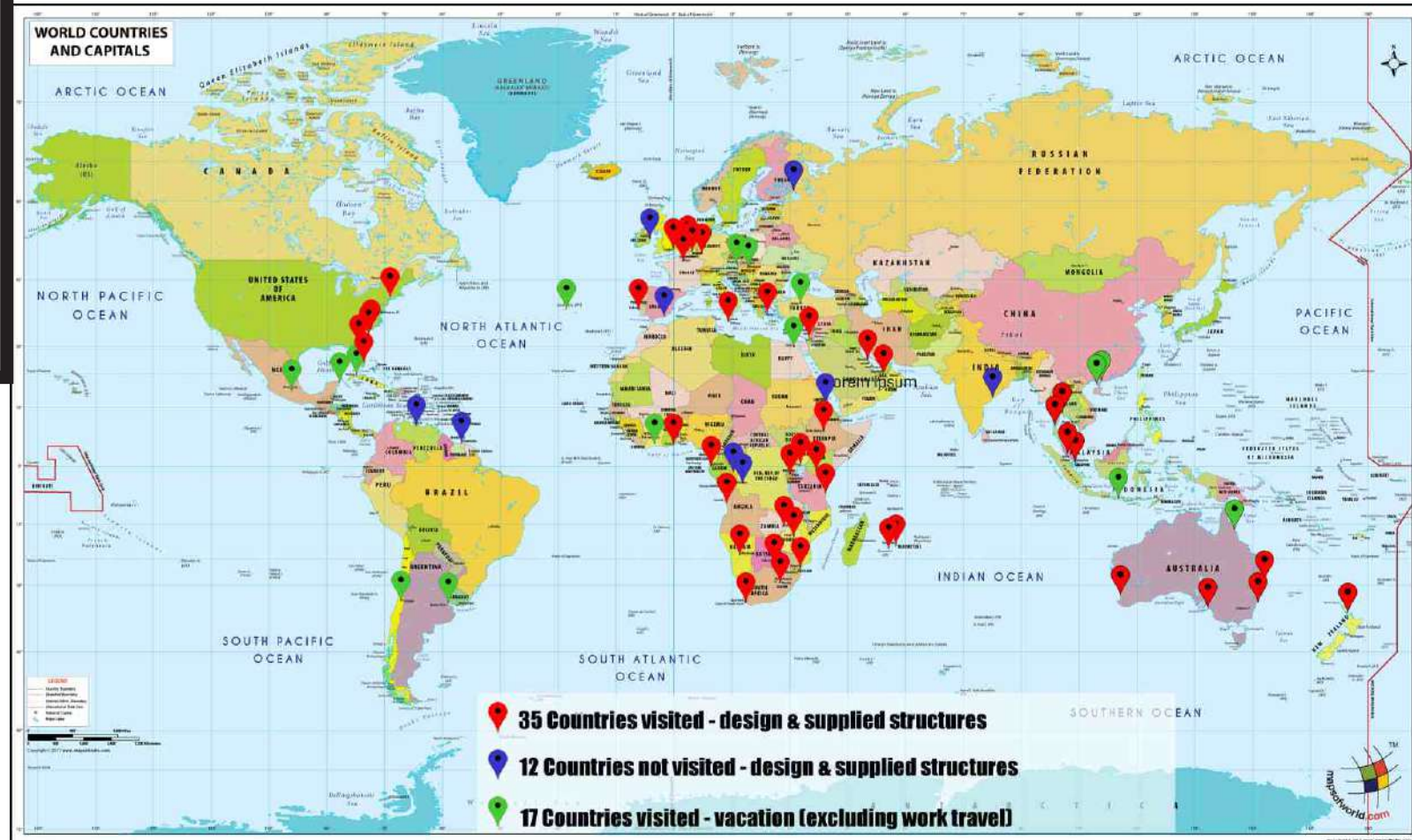
Louw
Botha



SAVANNA Luxury Tents & Habitats

2022 by the numbers

- 30 years experience
- 1 000's of projects
- 10 000's of structures
- 47 countries
- 88 standard designs
- 10 000's of engineering & design hours



A modern outdoor deck with wooden decking, a curved roof, and potted plants under a blue sky. The deck features a curved wooden railing and a large potted palm tree. The background shows a building with large windows and a clear blue sky with scattered clouds.

BRINGING
GREAT DESIGNS
TO LIFE

SAVANNA Luxury Tents & Habitats



A wooden viewing deck with a dark roof and a wooden railing is positioned on a hillside. The deck provides a clear view of a fenced-in enclosure containing several zebras grazing in tall grass. The background features rolling hills under a cloudy sky. The text "bringing you as close to nature as you dare" is overlaid in the center of the image.

bringing you as close
to nature as you dare

SAVANNA Luxury Tents & Habitats

At Savanna Luxury Tents & Habitats we are dedicated to designing and crafting exceptional bush lodges that redefine the concept of luxury in the wilderness. With our expertise in creating exquisite tented accommodation and habitats, we bring a unique and unparalleled touch to your next bush lodge project.

Why choose Savanna Luxury Tents & Habitats to design your next project:

1. Unmatched Expertise
2. Innovation Design Solutions
3. Luxurious Comfort
4. Seamless Integration Solutions
5. Luxurious Comfort
6. Seamless Integration with Nature
7. Tailored to Your Vision
8. Quality Craftsmanship

Choosing Savanna Luxury Tents and Habitats means entrusting your bush lodge project to a team that is passionate, experienced, and dedicated to creating an unforgettable experience for you and your guests. Let us transform your vision into breathtaking reality, where luxury and nature coverage in perfect harmony.



SAVANNA Luxury Tents & Habitats

FINDING YOU IN EVERY DETAIL

When deciding on the perfect design for your needs there are a number of criteria that need to be taken into account.

Amongst these is how many people must the unit accommodate. What is the expected lifespan of the structure. Do you require us to include the electrical works, the plumbing, sanitary ware, deck and the civils.



Function of the structure to provide shade or rain protection. What weather conditions can we expect & what weather conditions need to be taken into account in the design.

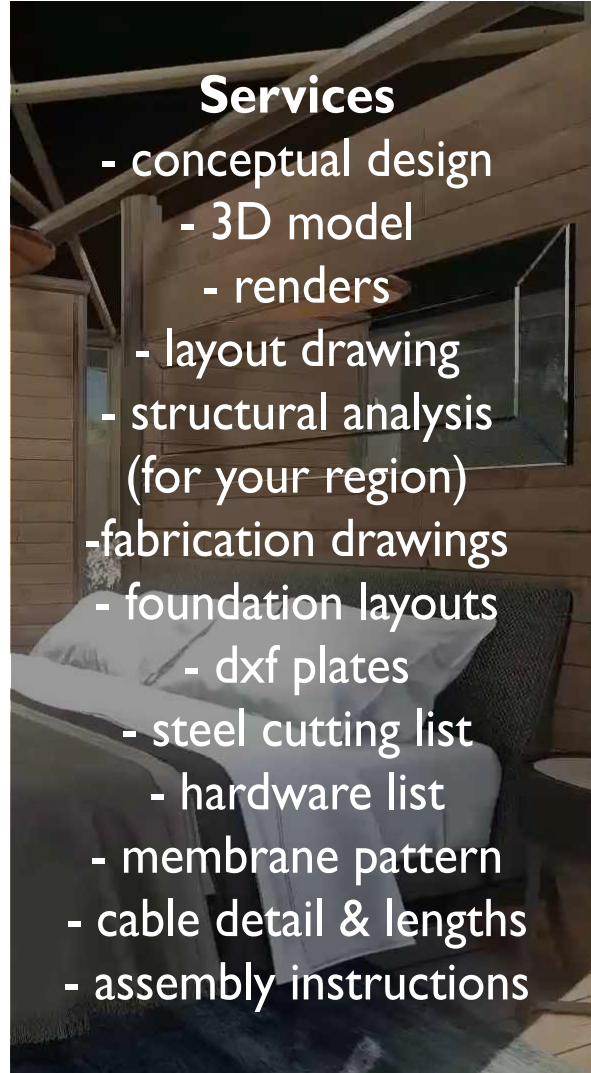


Preferred design. There are many designs that we can offer in both standard and bespoke designs. We work with you to determine the best fit for your requirements.



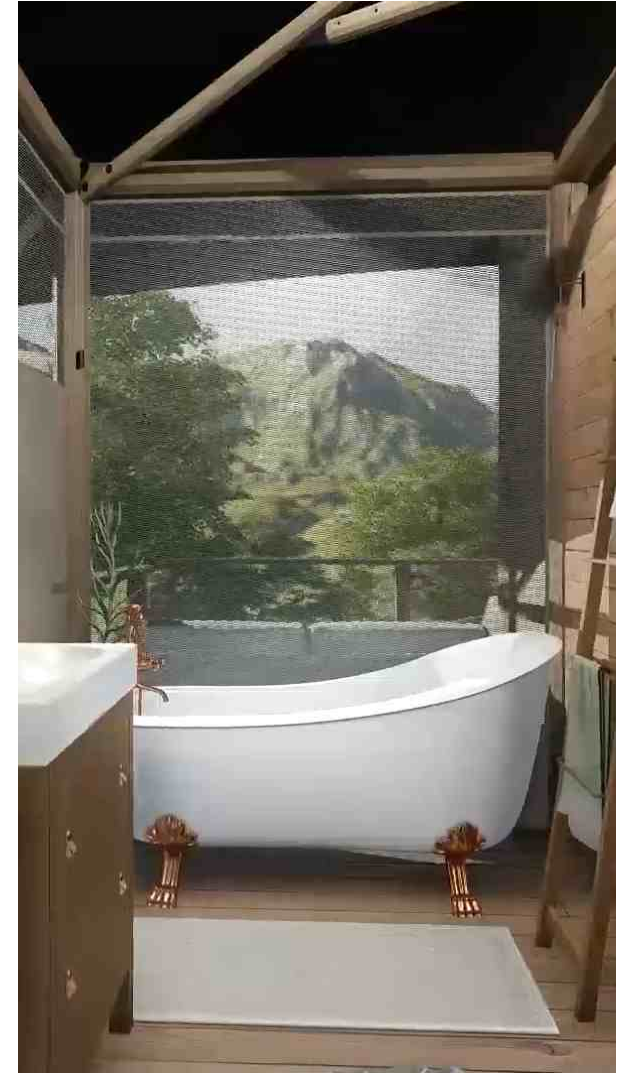
Do you require an engineers sign off on the project or do you just require the structural analysis report that we routinely offer to our clients for each project we undertake.

SAVANNA Luxury Tents & Habitats



Services

- conceptual design
- 3D model
- renders
- layout drawing
- structural analysis (for your region)
- fabrication drawings
- foundation layouts
- dxf plates
- steel cutting list
- hardware list
- membrane pattern
- cable detail & lengths
- assembly instructions



SAVANNA Luxury Tents & Habitats

INSIST ON A STRUCTURAL ANALYSIS



LET US DESIGN YOU NEXT...

TIMELINE

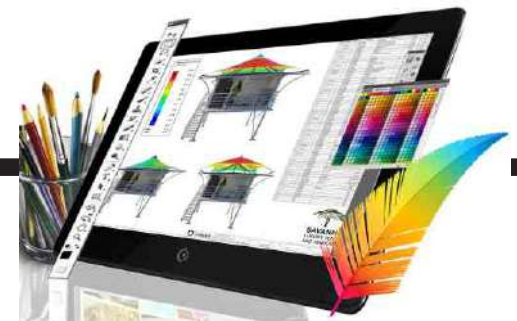


DESIGN



In general the design process takes about 7 working days. This includes the layout drawings, renders and membrane patterns.

ANALYSIS



Structural analysis is conducted by country and by region in accordance with the required wind load codes of the region. This process can take up to a week depending on the complexity of the design.

SAVANNA Luxury Tents & Habitats

FABRICATION

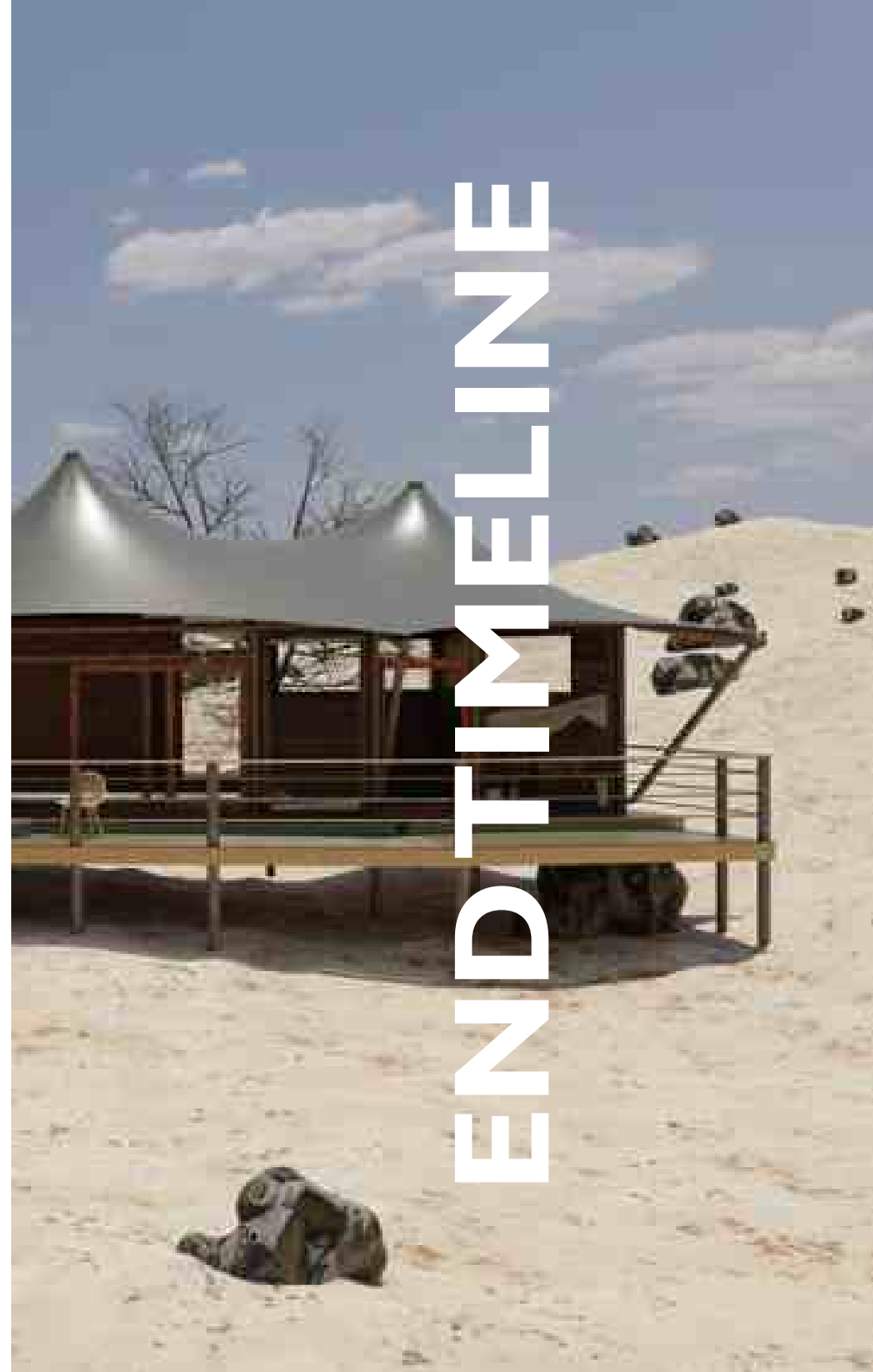


Fabrication process takes about 4-6 weeks. This will include the costing, procurement, receipt of materials, fabrication & coating.

INSTALLATION



The time on site is totally dependant on the complexity of the structure. Site visits are normally broken up into foundations and the installation of the actual structure.



END
TIMELINE

SAVANNA Luxury Tents & Habitats

Steel Frame

Steel frames are ideal for high wind areas, snow load areas and elevated structures. Very low maintenance.



2 Wood Frame

Wood frame blend naturally into the environment. They require more maintenance than steel framed structures.



SAVANNA Luxury Tents & Habitats

GUEST SUITES
(Timber & Glass Walls)

SAVANNA Luxury Tents & Habitats



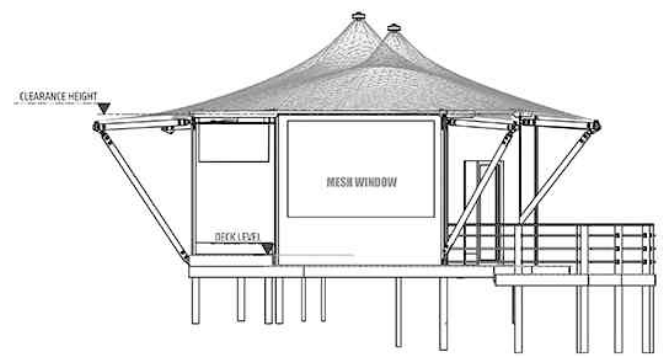
SAUGAGE Guest Suite



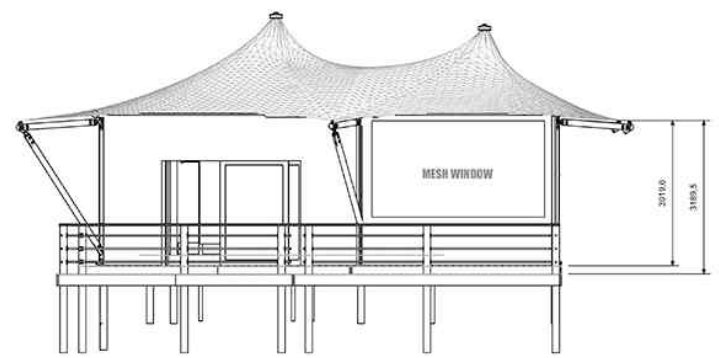
Living area size: Width 5.1m x Length 9.1m
Membrane area size: Width 7.7m x Length 11.1m
Deck Area: 8.4m x 8.9m
Balcony: Timber.
Frame Material: Outer roof Architectural PVC
Membrane material selection: Inner Tenting
28.0 m²
Walling: Timber & Framed Glass
Wind load: 144km/h.
<https://www.idtcustomawnings.shop/saugageguestsuite>

SAVANNA Luxury Tents & Habitats

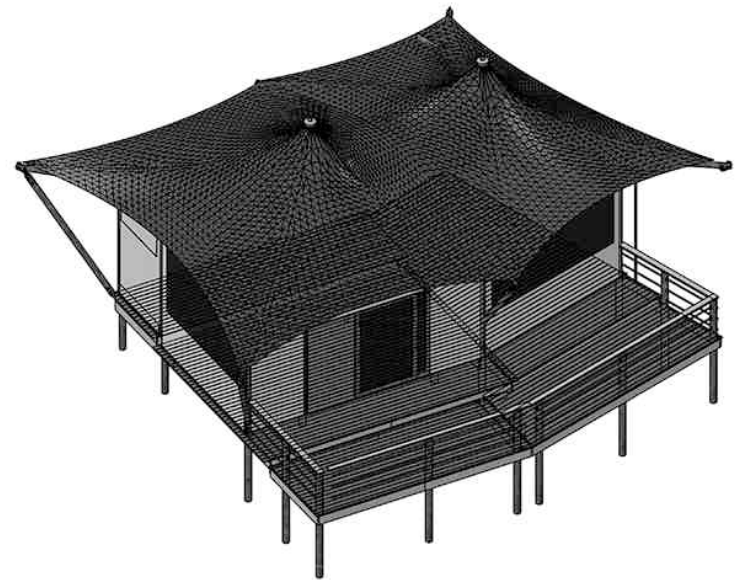
SAUGAGE Guest Suite



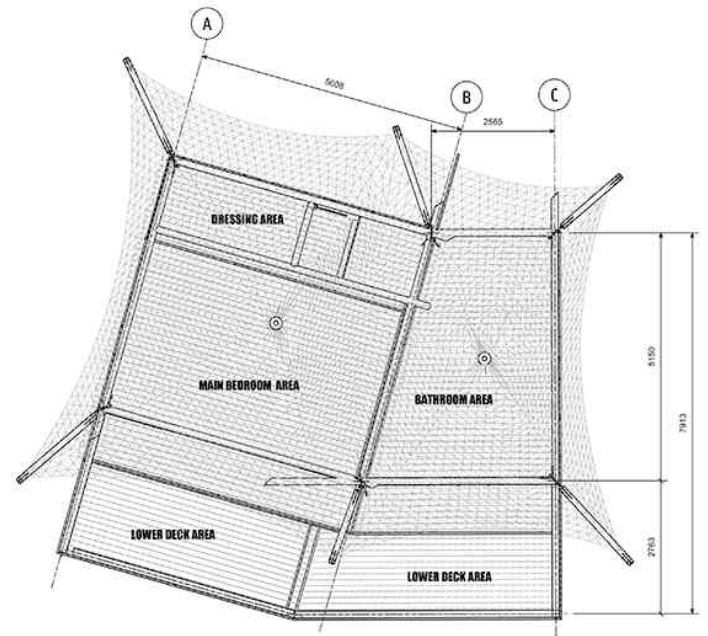
SIDE VIEW4
SCALE: (1 : 65)



FRONT VIEW
SCALE: (1 : 65)



ISOMETRIC VIEW
SCALE: (1 : 65)

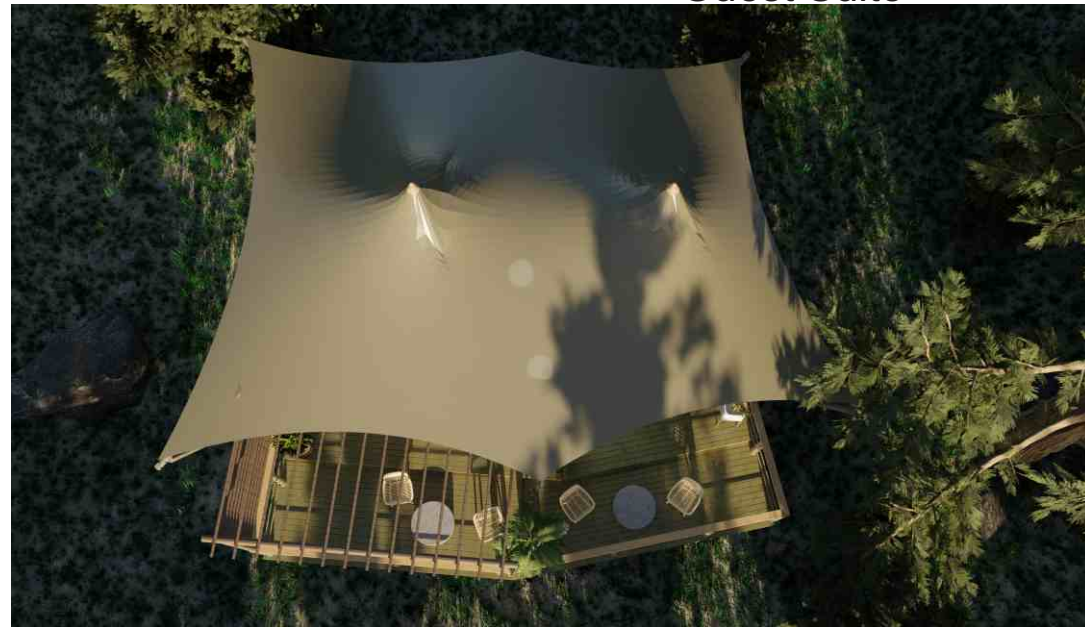


PLAN / TOP VIEW
SCALE: (1 : 65)

SAVANNA Luxury Tents & Habitats



CAMELTHORN Guest Suite



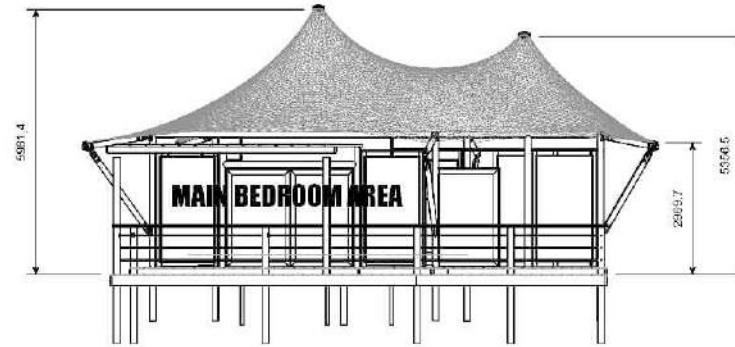
Living area size: Width 5.1m x Length 9.1m
Membrane area size: Width 7.7m x Length 11.1m
Deck Area: 8.4m x 8.9m
Balcony: 28.0 m²
Frame Material: Timber
Membrane material selection: Outer roof Architectural PVC
Inner Tenting
Walling: Timber & Framed Glass
Wind load: 144 km/h
<https://www.idtcustomawnings.shop/camel-thorn-guest-suite>

SAVANNA Luxury Tents & Habitats

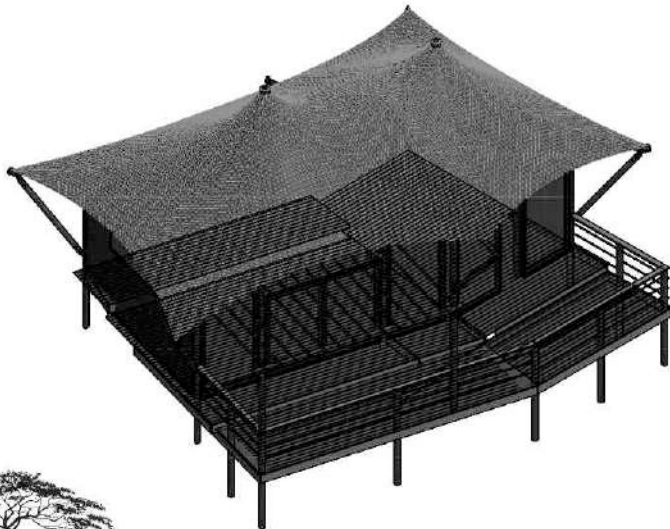
CAMELTHORN Guest Suite



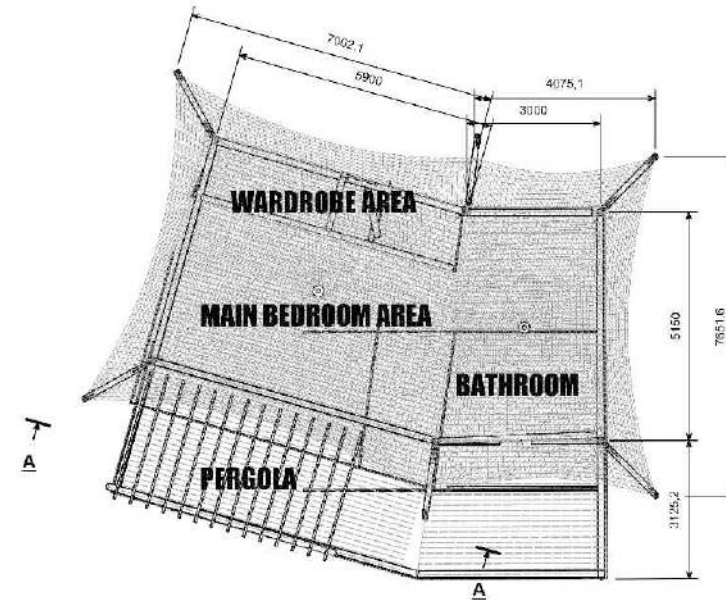
SECTION A-A
SCALE: (1 : 100)



FRONT VIEW
SCALE: (1 : 100)



ISOMETRIC VIEW
SCALE: (1 : 100)



PLAN / TOP VIEW
SCALE: (1 : 100)



SAVANNA
LUXURY TENTS & HABITATS

DI TENSILE
EST. 1972

SAVANNA TENTING (PTY) LTD
111 ROBERTSON ROAD, SANDHURST, 7130
SOUTH AFRICA
TEL: +27 (0) 21 953 1234
WWW.SAVANNA-TENTS.COM

111 Robert Robertson Road | Reg Number: 2014/01524/09 | N.V. Number: 550196

203 Humberstone Road Unit 29, Steyners Bosch, Stellenbosch, 7601 | Tel: +27 (0) 21-950 1124 | Fax: +27 (0) 21-950 1500

ARCH: Paul Jacobs	PROJECT: 10024 - Guest Suite	DATE: Guest suite
SCALE: A3 1:100	PROJECT: 10024-GA-0001	DESCRIPTION: - Project Assembly



SAVANNA Luxury Tents & Habitats



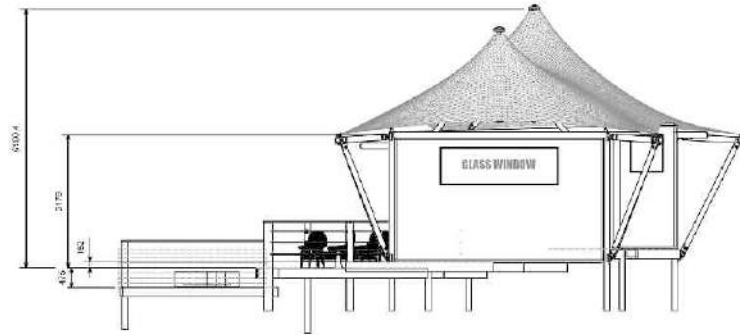
MARULA Guest Suite



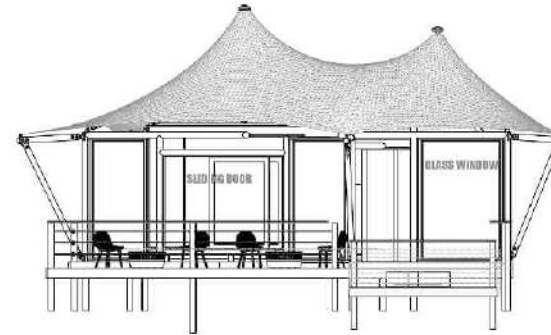
Living area size:	Width 5.1m x Length 9.1m
Membrane area size:	Width 7.7m x Length 11.1m
Deck Area:	8.4m x 8.9m
Balcony:	Timber.
Frame Material:	Outer roof Architectural PVC
Membrane material selection:	Inner Tenting Canvas
	28.0 m ²
Walling:	Timber & Framed Glass
Wind load:	144km/h
Fire Pit:	3.6 x 3.0m
	https://www.idtcustomawnings.shop/marula-guest-suite

SAVANNA Luxury Tents & Habitats

MARULA Guest Suite



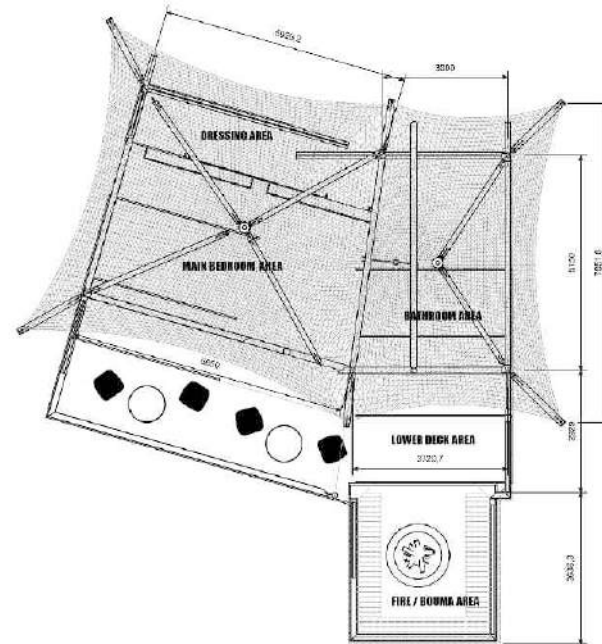
SIDE VIEW
SCALE: (1 : 75)



FRONT VIEW
SCALE: (1 : 75)



ISOMETRIC VIEW
SCALE: (1 : 65)



PLAN / TOP VIEW
SCALE: (1 : 75)



PROGETTO	PRODOTTO	PRODOTTORE	PRODOTTORE	PRODOTTORE	PRODOTTORE	PRODOTTORE	PRODOTTORE
10027 - Bala Lodge - Guest Suite							
1:75	1:75	1:75	1:75	1:75	1:75	1:75	1:75
1:75	1:75	1:75	1:75	1:75	1:75	1:75	1:75

PRODOTTORE	PRODOTTORE	PRODOTTORE	PRODOTTORE	PRODOTTORE	PRODOTTORE	PRODOTTORE	PRODOTTORE



SAVANNA Luxury Tents & Habitats



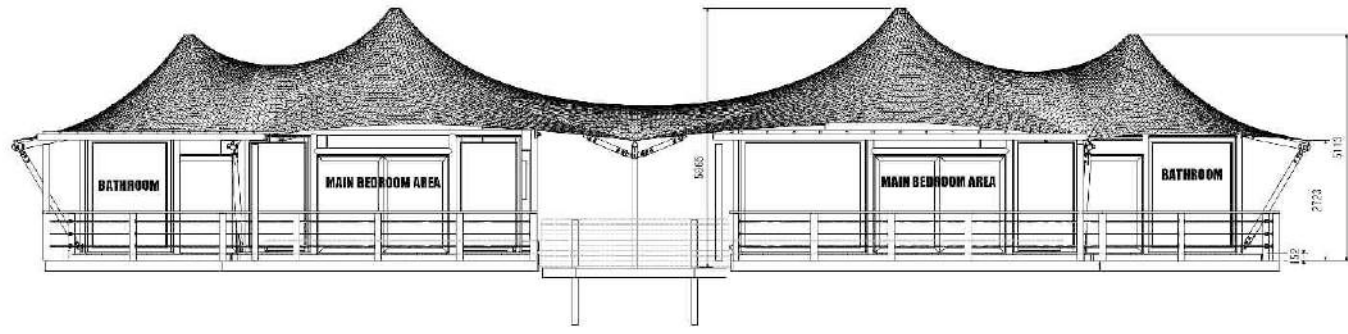
BIRCHWOOD TWIN Guest Suite



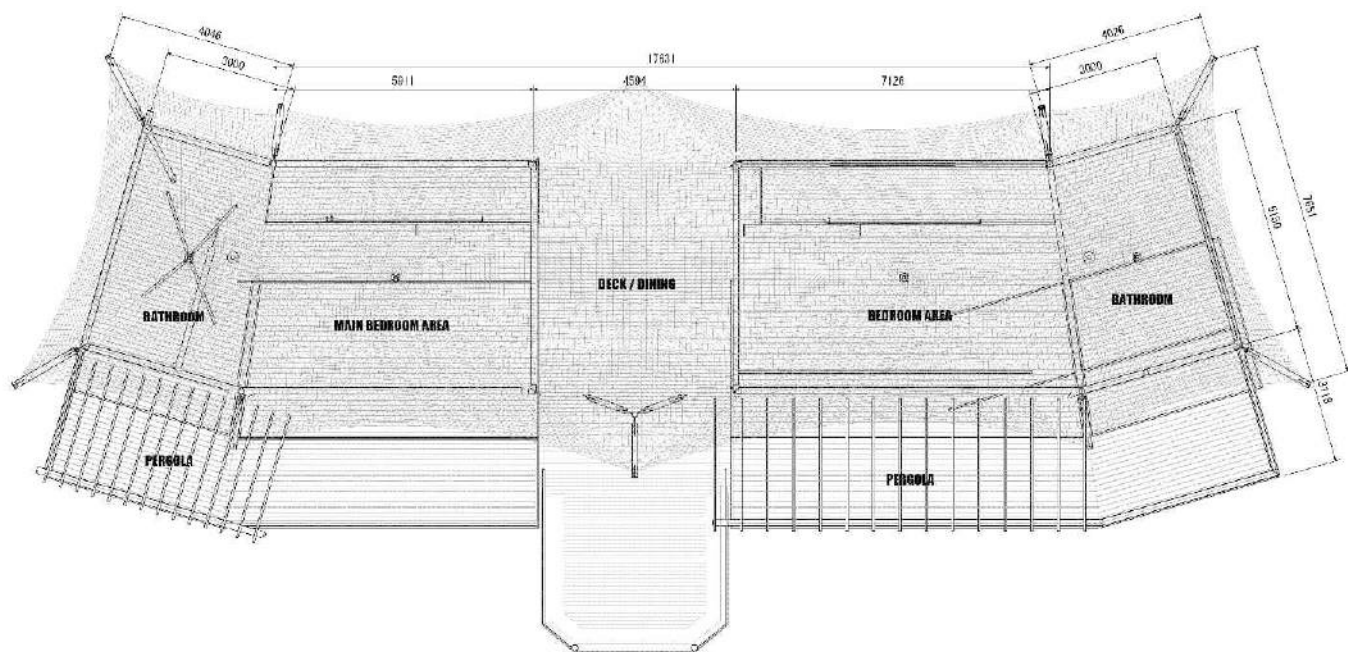
Living area size:	Width 5.1m x Length 23.1m
Membrane area size:	Width 7.7m x Length 11.1m
Deck Area:	8.3m x 23.1m
Balcony:	65.0 m ²
Frame Material:	Frame Material: Timber.
Membrane material selection:	Outer roof Architectural PVC Inner Tenting
Walling:	Timber & Framed Glass
Wind load:	144km/h
Fire Pit:	
https://www.idtcustomawnings.shop/birchwoodtwinguestsuite	

SAVANNA Luxury Tents & Habitats

BIRCHWOOD TWIN Guest Suite



FRONT VIEW
SCALE 1:40



PLAN / TOP VIEW
SCALE 1:40

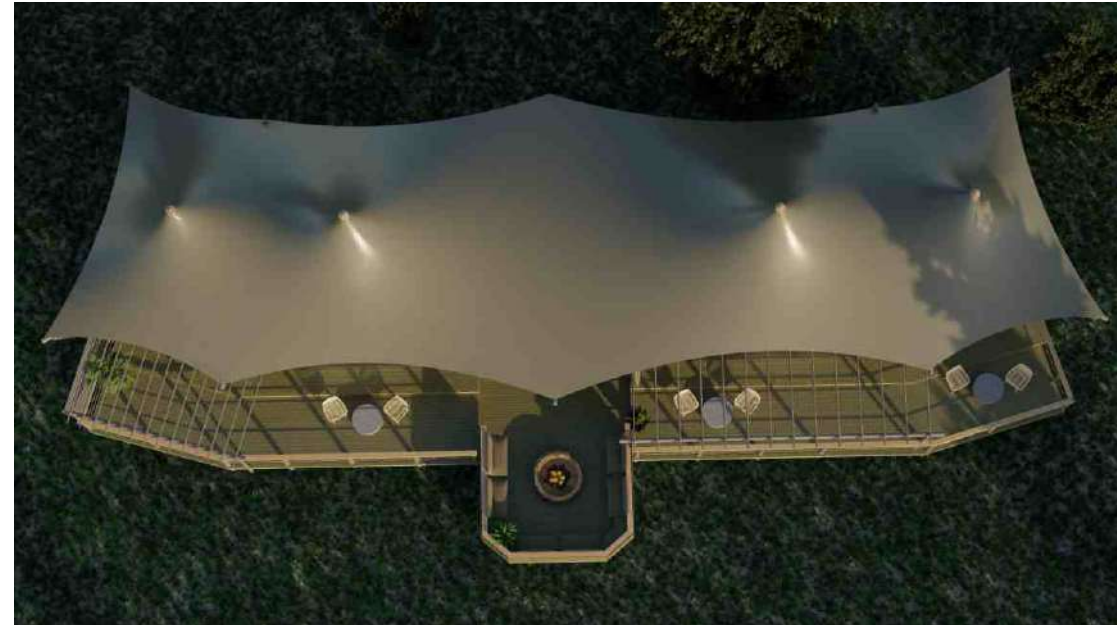


		<small>SAVANNA LUXURY TENTS & HABITATS</small>		<small>SAVANNA LUXURY TENTS & HABITATS</small>	
<small>PRODOTTORE</small> DI TENSILE	<small>PROGETTISTA</small> SAVANNA LUXURY TENTS & HABITATS	<small>PROGETTORE</small> SAVANNA LUXURY TENTS & HABITATS	<small>PROGETTORE</small> SAVANNA LUXURY TENTS & HABITATS	<small>PROGETTORE</small> SAVANNA LUXURY TENTS & HABITATS	<small>PROGETTORE</small> SAVANNA LUXURY TENTS & HABITATS
<small>PRODOTTORE</small> DI TENSILE	<small>PROGETTISTA</small> SAVANNA LUXURY TENTS & HABITATS	<small>PROGETTORE</small> SAVANNA LUXURY TENTS & HABITATS	<small>PROGETTORE</small> SAVANNA LUXURY TENTS & HABITATS	<small>PROGETTORE</small> SAVANNA LUXURY TENTS & HABITATS	<small>PROGETTORE</small> SAVANNA LUXURY TENTS & HABITATS

SAVANNA Luxury Tents & Habitats



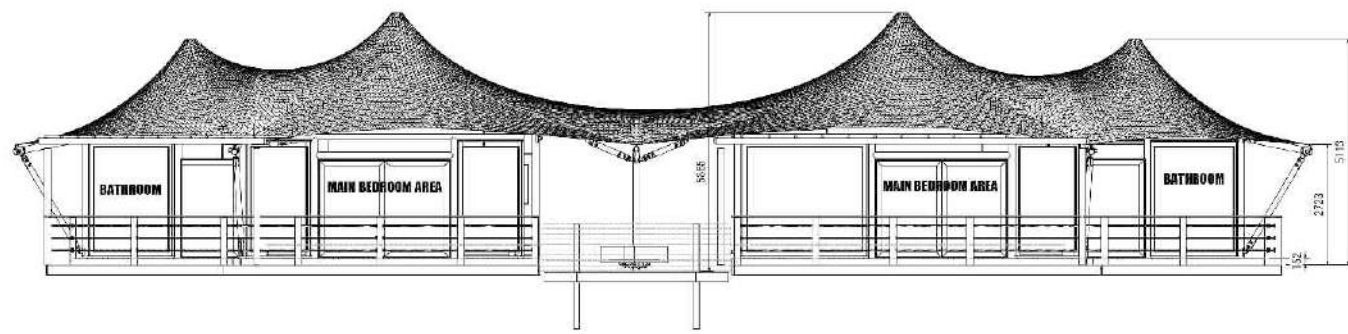
LEADWOOD TWIN Guest Suite



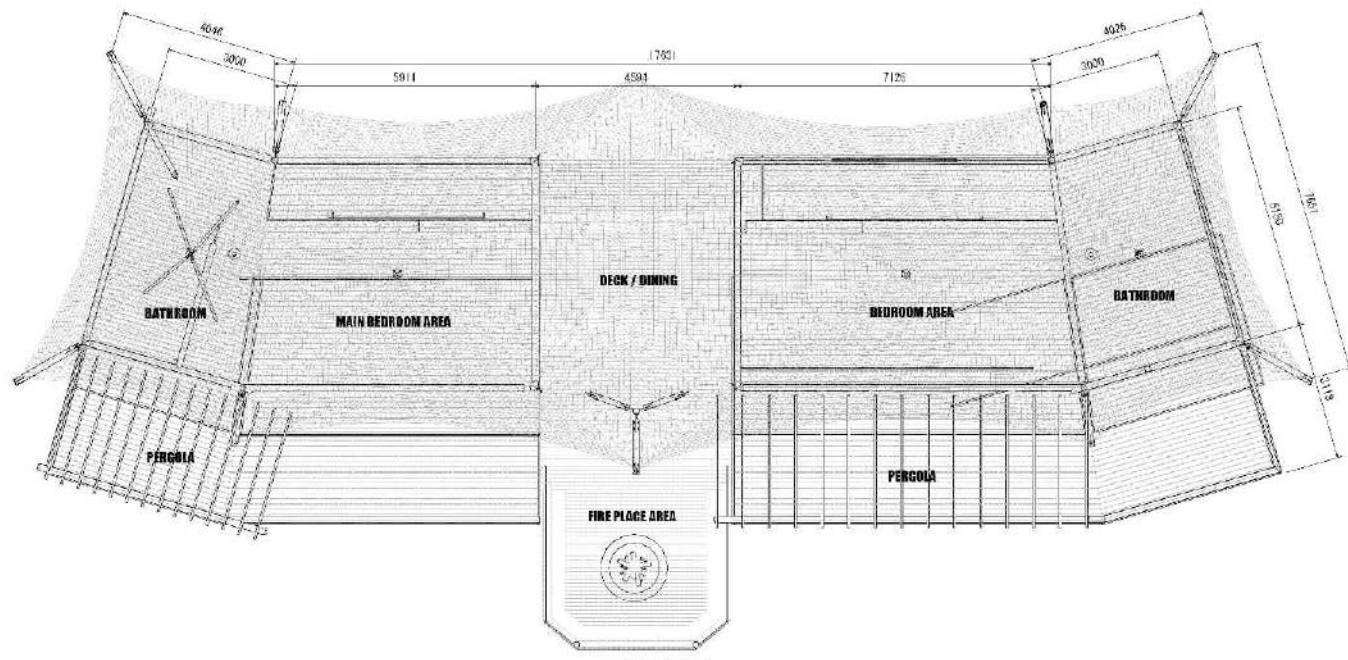
Living area size:	Width 5.1m x Length 23.1m
Membrane area size:	Width 7.7m x Length 11.1m
Deck Area:	8.3m x 23.1m
Balcony:	65.0 m ²
Frame Material:	Timber
Membrane material selection:	Outer roof Architectural PVC Inner Tenting
Walling:	Timber & Framed Glass
Wind load:	144km/h
Fire Pit:	4.6 x 3.0m
https://www.idtcustomawnings.shop/leadwoodtwinguestsuite	

SAVANNA Luxury Tents & Habitats

LEADWOOD TWIN Guest Suite



FRONT VIEW
SCALE 1:100



PLAN | TOP VIEW
SCALE 1:100

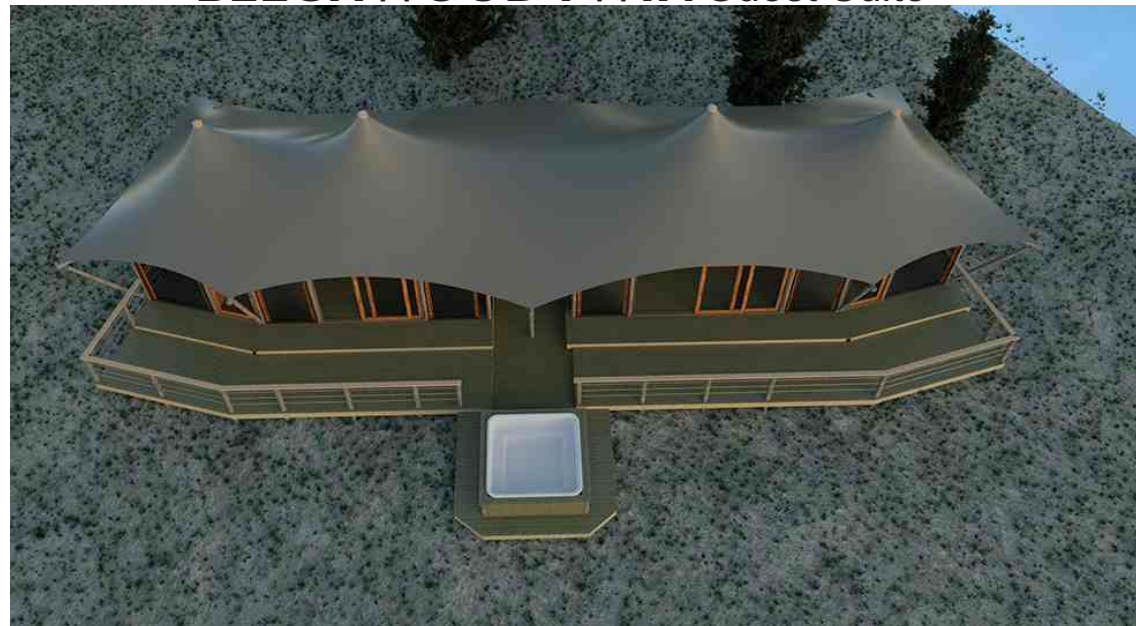


	PROJECT NAME LEADWOOD TWIN GUEST SUITE	CLIENT SAVANNA LUXURY TENTS & HABITATS	ARCHITECT DIFENSILE	DATE 2024.01.01	SCALE 1:100	SHEET NO. 01/01	TOTAL SHEETS 01/01
	SAVANNA LUXURY TENTS & HABITATS - LEADWOOD TWIN GUEST SUITE - ARCHITECTURAL DRAWING - FRONT VIEW AND PLAN TOP VIEW						

SAVANNA Luxury Tents & Habitats



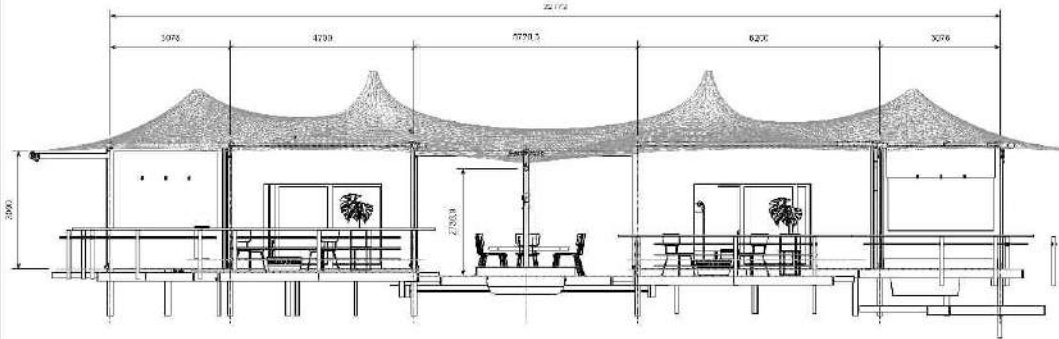
BEECHWOOD TWIN Guest Suite



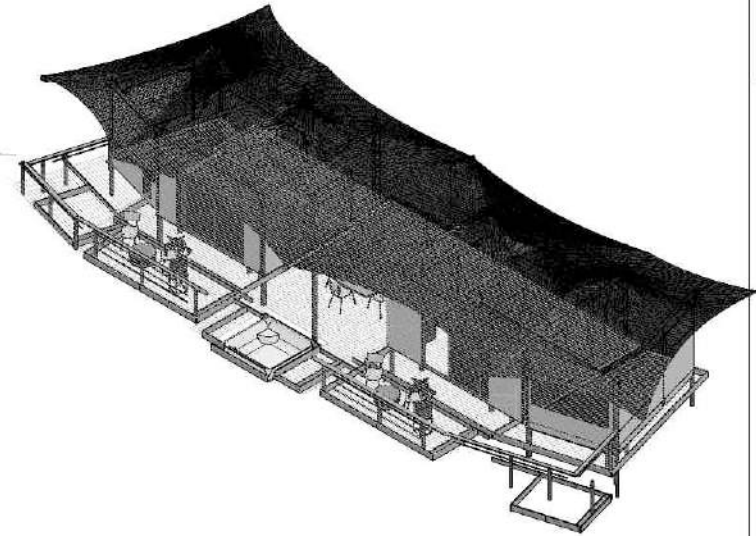
Living area size:	Width 5.1m x Length 23.1m
Membrane area size:	Width 7.7m x Length 11.1m
Deck Area:	8.3m x 23.1m
Balcony:	65.0 m ²
Frame Material:	Frame Material: Timber.
Membrane material selection:	Outer roof Architectural PVC Inner Tenting
Walling:	Timber & Framed Glass
Wind load:	144km/h
Jacuzzi:	2070 x 2070 x 1015mm
https://www.idtcustomawnings.shop/beechwoodtwinguestsuite	

SAVANNA Luxury Tents & Habitats

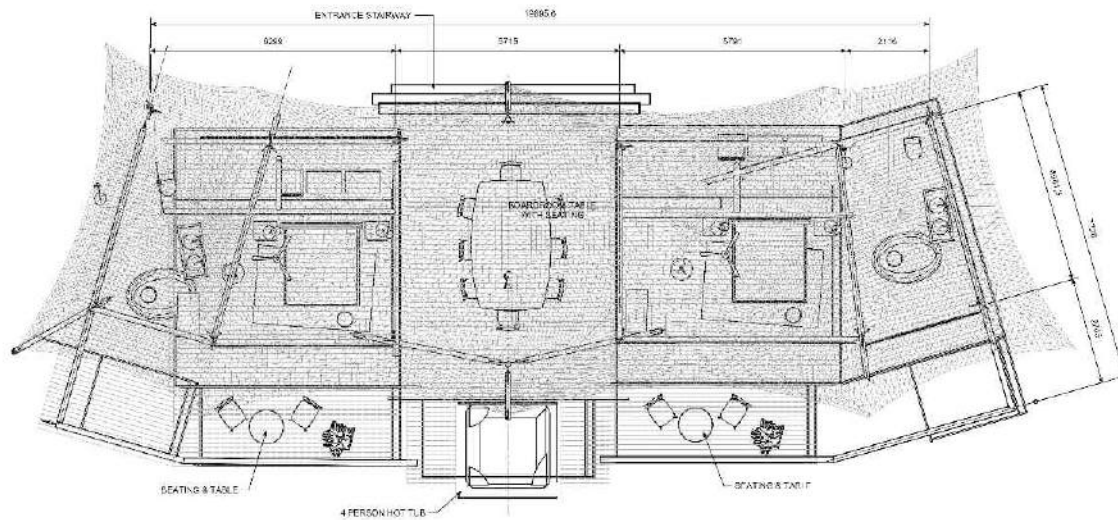
BEECHWOOD TWIN Guest Suite



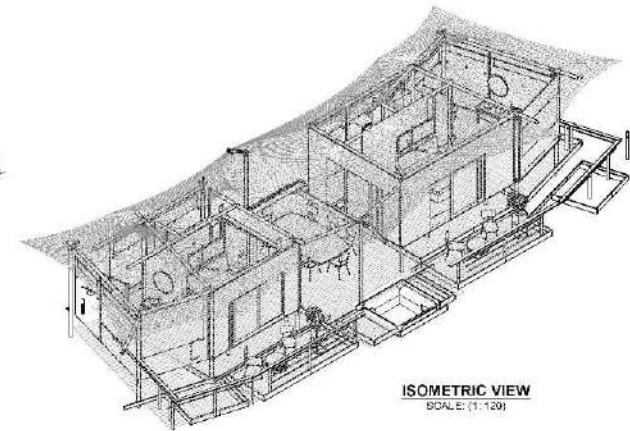
FRONT VIEW
SCALE: (1 : 60)



SIDE VIEW4
SCALE: (1 : 100)



PLAN / TOP VIEW
SCALE: (1 : 80)



ISOMETRIC VIEW
SCALE: (1 : 120)



SAVANNA
LUXURY TENTS & HABITATS

DITENSILE EST. 1972

SAVANNA TENTS & HABITATS
10026 Awasch Presidential Suite
10026 Awasch Presidential Suite
10026 Awasch Presidential Suite

PROJ: Paul Jacobs	DATE: 11-20	SCALE: 10026 EA 001	DO NOT SCALE
DRW: AP	DATE: 11-20	SCALE: 10026 EA 001	DO NOT SCALE

NO: 10026	NAME: Awasch Presidential Suite
DATE: 11-20	SCALE: 10026 EA 001
DRW: AP	SCALE: 10026 EA 001



SAVANNA Luxury Tents & Habitats



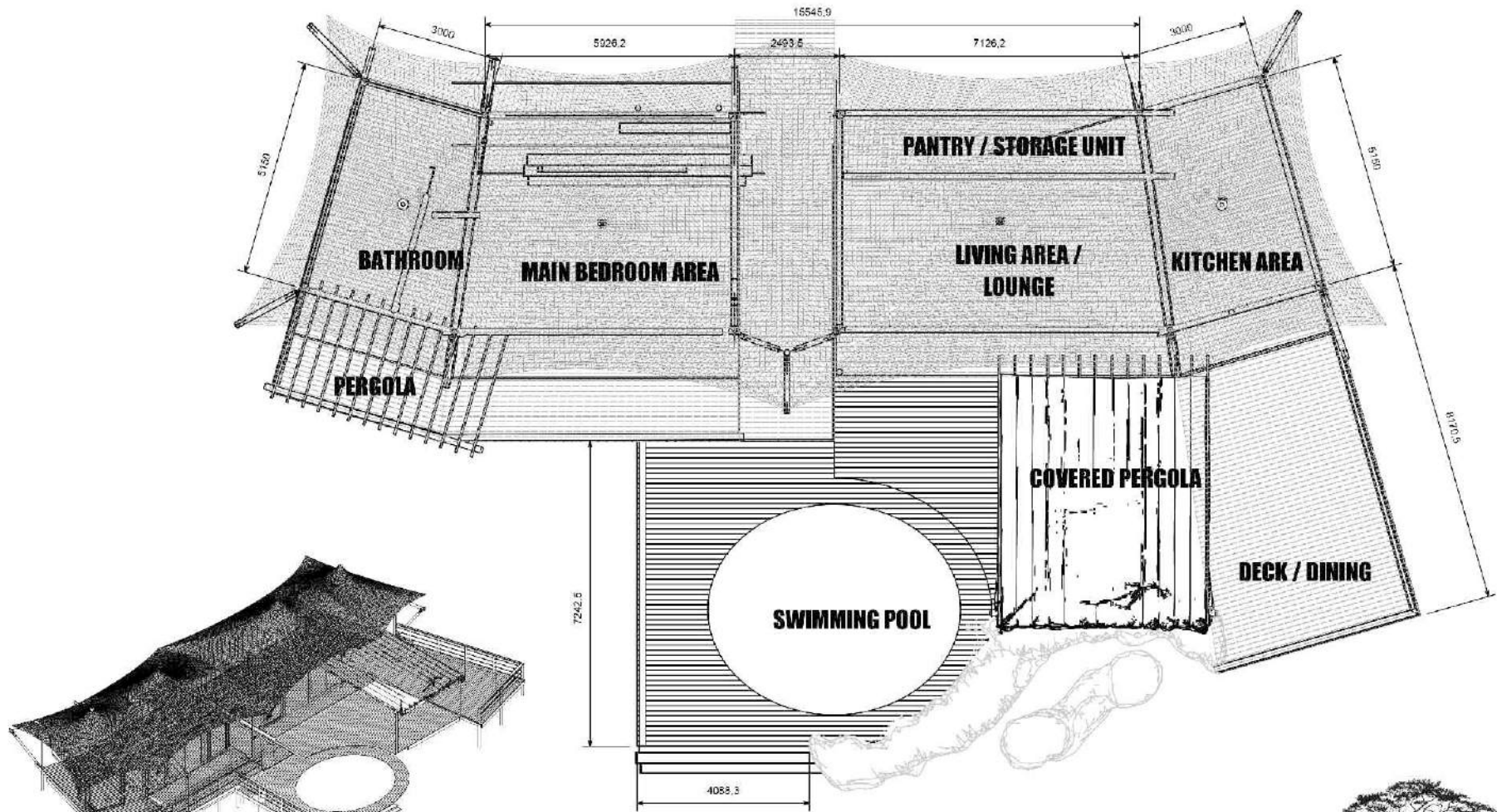
SYCAMORE PRESIDENTIAL Guest Suite



Living area size:	Width 5.1 m x Length 21.5m
Membrane area size:	Width 9.7m x Length 25.1m
Deck Area:	8.3m x 23.1m
Balcony:	191.0 m ²
Frame Material:	Timber.
Membrane material selection:	Outer roof Architectural PVC Inner Tenting
Walling:	Timber & Framed Glass
Wind load:	144km/h
Swimming Pool:	5m diameter
https://www.idtcustomawnings.shop/sycamorepresidentialguestsuite	

SAVANNA Luxury Tents & Habitats

SYCAMORE PRESIDENTIAL Guest Suite



SAVANNA
LUXURY TENTS & HABITATS



THE COVER TOP STRUCTURE IS BEING
OFFERED AS A SERVICE TO OUR CLIENTS. IT IS
NOT TO BE USED AS A STRUCTURE FOR
OTHER THAN THE INTENDED PURPOSE.
4 De Witte St, Hillside, Cape Town, 7913, South Africa

DESIGNER	DATE	PROJECT NO.	PROJECT NAME	SCALE
Paul Jacobs	1:90	10026-PA-0001	10026 - Presidential Suite	1:90

PROJECT NO.	PROJECT NAME	SCALE	DATE
10026 - Presidential Suite	10026 - Presidential Suite	1:90	2024-08-20

DO NOT SCALE
IF ANY DIMENSIONS DO NOT FIT TO SCALE

MEMBRANE D1 ASSEMBLY



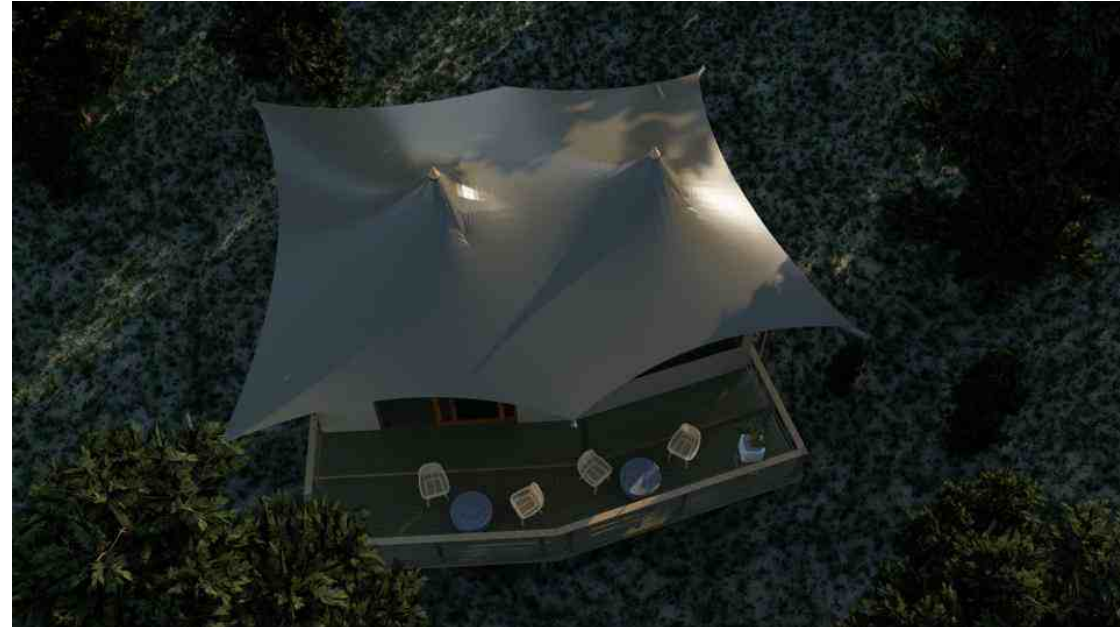
SAVANNA Luxury Tents & Habitats

GUEST TENTS
(Canvas Walls)

SAVANNA Luxury Tents & Habitats



MOPANE Guest Tent

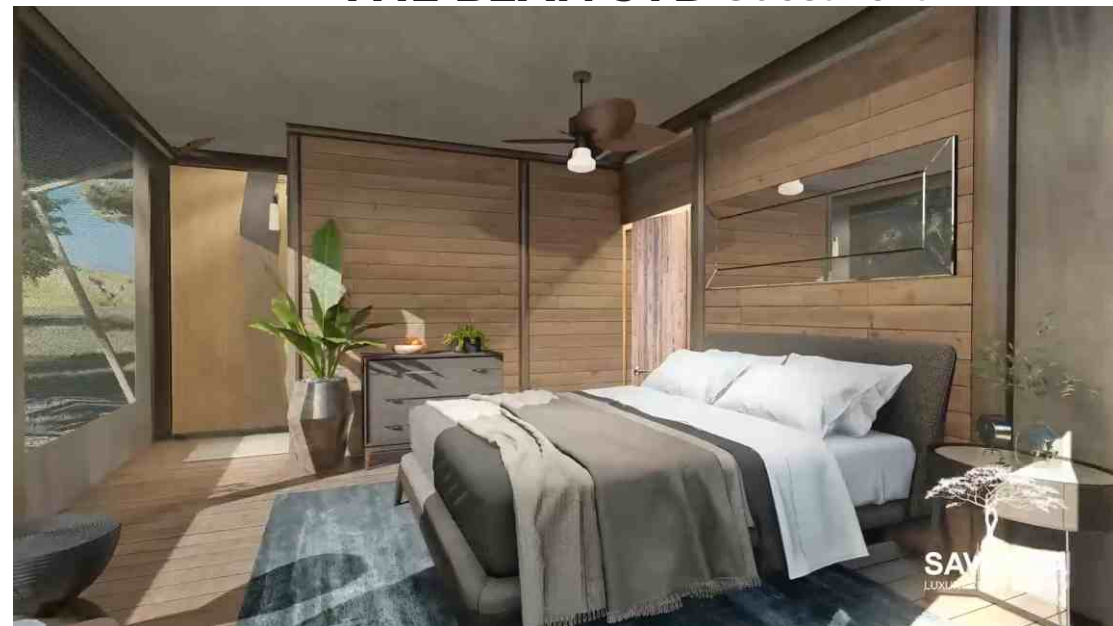


Living area size:	Width 5.1m x Length 8.0m
Membrane area size:	Width 8.0m x Length 10.1m
Deck Area:	8.0m x 2.7m
Balcony:	22.0 m ²
Frame Material:	Timber
Membrane material selection:	Outer roof Architectural PVC Inner Tenting
Walling:	Rip Stop
Wind load:	144km/h
https://www.idtcustomawnings.shop/mopaneguestsuite	

SAVANNA Luxury Tents & Habitats



THE BEAN STD Guest Tent

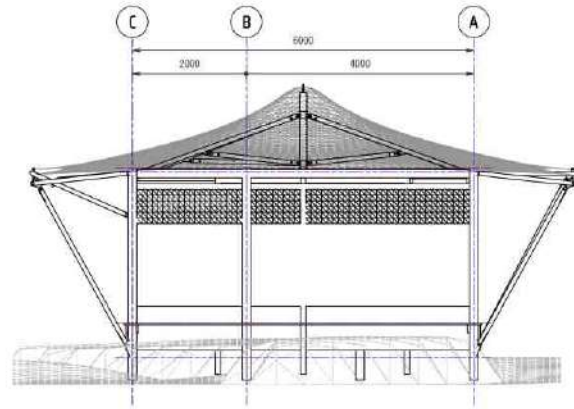


Living area size:	Width 6.0m x Length 6.0m
Membrane area size:	Width 9.0m x Length 9.0m
Deck Area:	8.0m x 6.0m
Balcony:	12.0 m ²
Frame Material:	Timber
Membrane material selection:	Outer roof Architectural PVC Inner Tenting
Walling:	Ripstop
Wind load:	144km/h
https://www.idtcustomawnings.shop/thebean	

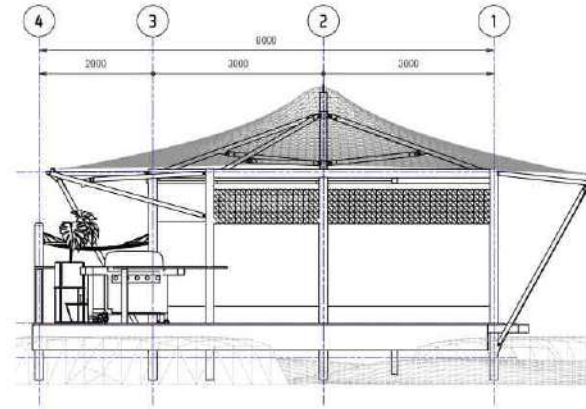
SAVANNA Luxury Tents & Habitats

THE BEAN STD Guest Tent

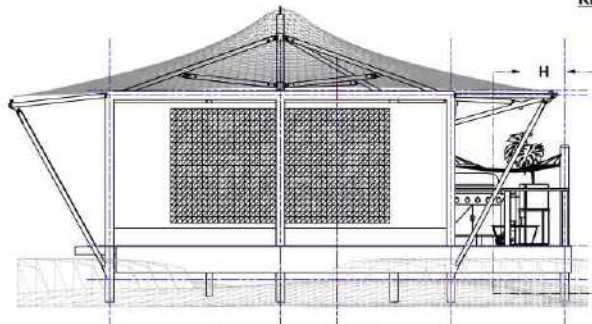
PARTS LIST			
ITEM	ITEM QTY	BASIC QTY	PART NUMBER
1	2	1	10234-CA-0002
2	2	1	10234-CA-0004
3	1	1	10234-CA-0005
4	1	1	10234-CA-0006
5	1	1	10234-CA-0007
6	1	1	10234-CA-0009
7	1	1	10234-CA-0010
8	1	1	10234-CA-0011
9	1	1	10234-CA-0012
10	1	1	10234-CA-0014
11	1	1	10234-CA-0016
12	1	1	10234-CA-0017
13	1	1	10234-CA-0019
14	1	1	10234-CA-0021
15	1	1	10234-CA-0022
16	1	1	10234-CA-0024
17	3	1	10234-CA-0027
18	4	1	10234-CA-0028
19	1	1	10234-CA-0029
20	1	1	10234-CA-0030
21	1	1	10234-CA-0031
22	1	1	10234-CA-0032
23	1	1	10234-CA-0033



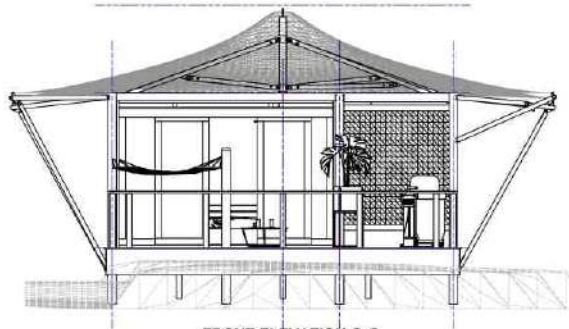
REAR ELEVATION
SCALE: (1:55)



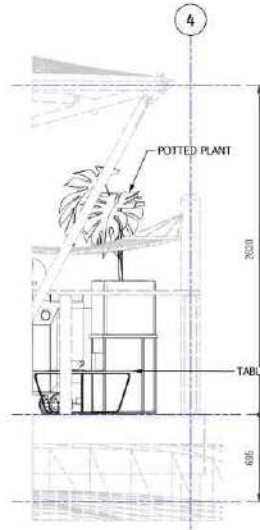
SIDE ELEVATION
SCALE: (1:55)



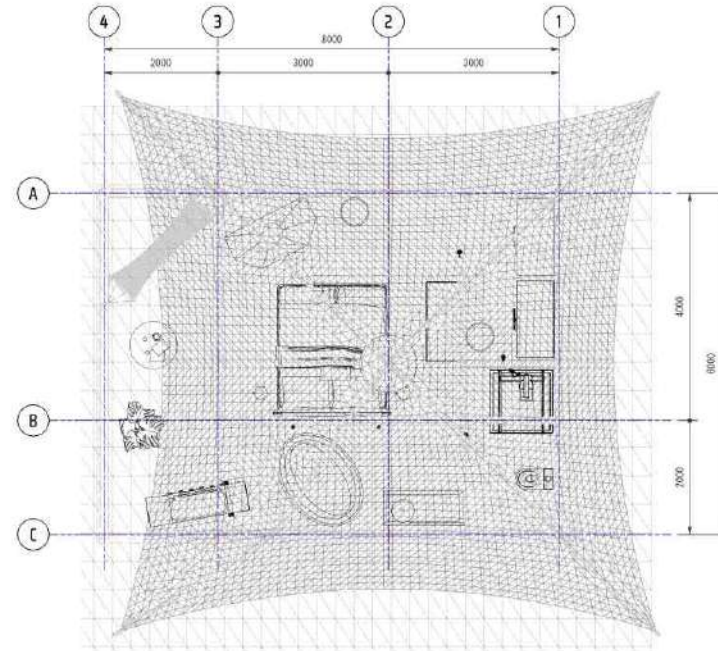
SIDE ELEVATION F-F
SCALE 1:55



FRONT ELEVATION G-G
SCALE 1:55



DETAIL - H
SCALE (0.04:1)



PLAN / TOP VIEW
SCALE (1:55)



SAVANNA Luxury Tents & Habitats



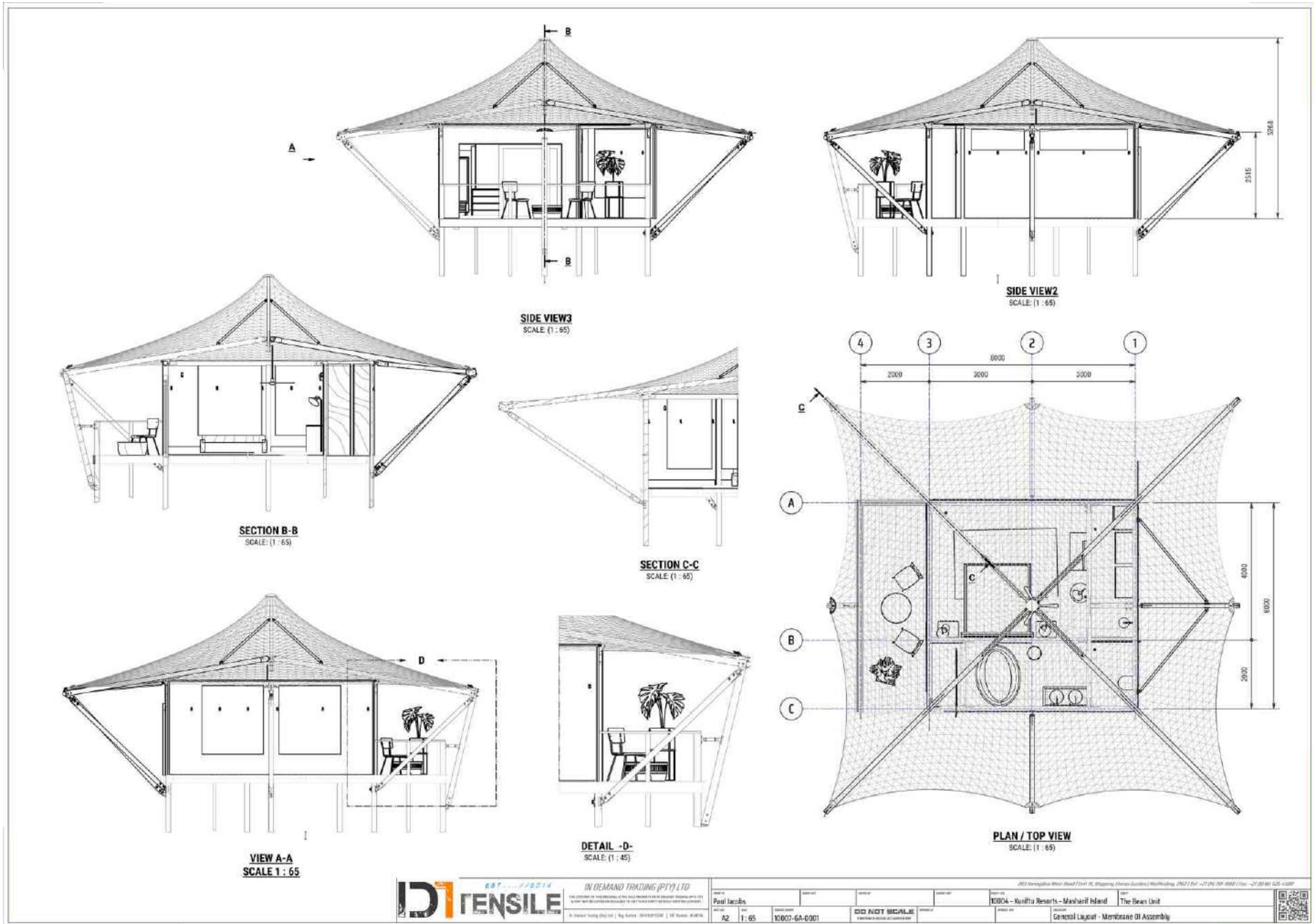
THE BEAN PRO Guest Tent



Living area size:	Width 6.0m x Length 6.0m
Membrane area size:	Width 12.0m x Length 12.0m
Deck Area:	8.0m x 6.0m
Balcony:	12.0 m ²
Frame Material:	Timber
Membrane material selection:	Outer roof Architectural PVC Inner Tenting
Walling:	Ripstop
Wind load:	144km/h
https://www.idtcustomawnings.shop/the-bean-pro	

SAVANNA Luxury Tents & Habitats

THE BEAN PRO Guest Tent



SAVANNA Luxury Tents & Habitats



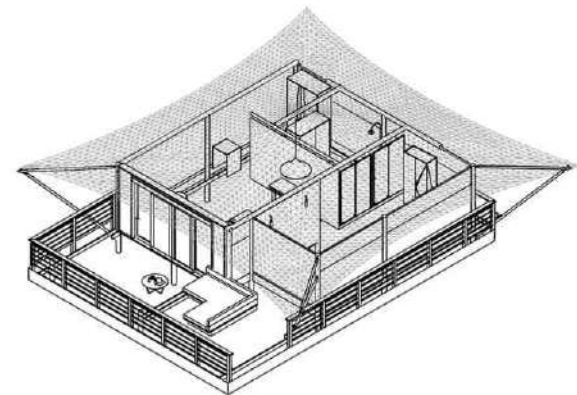
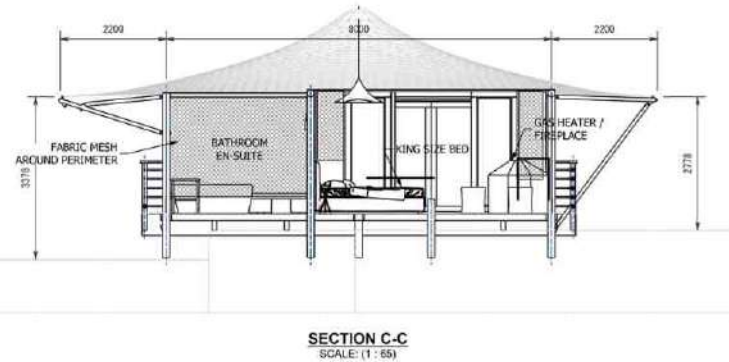
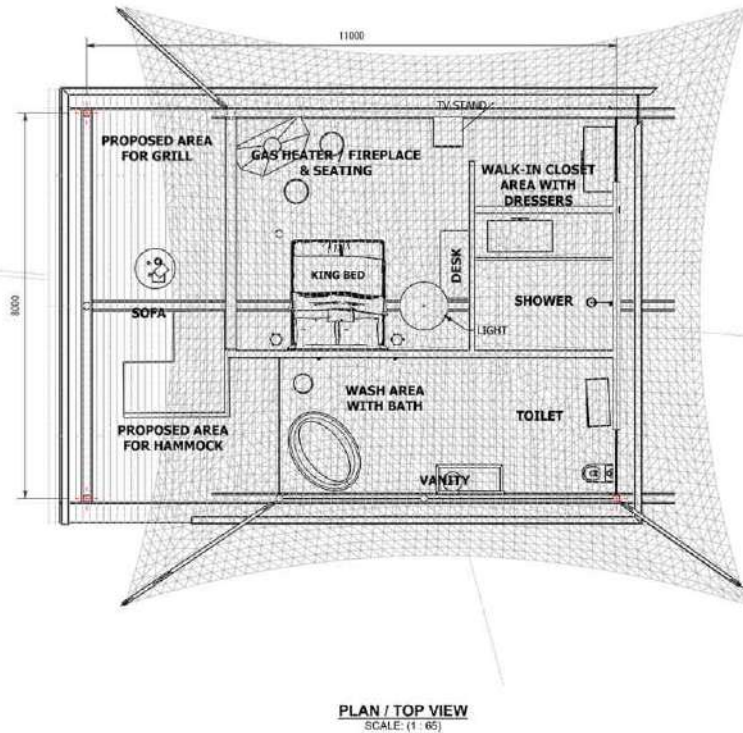
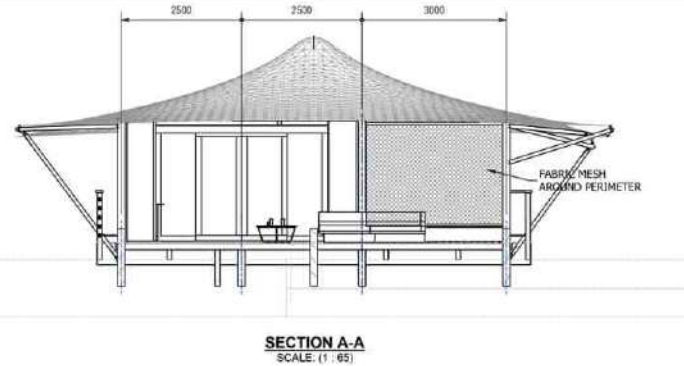
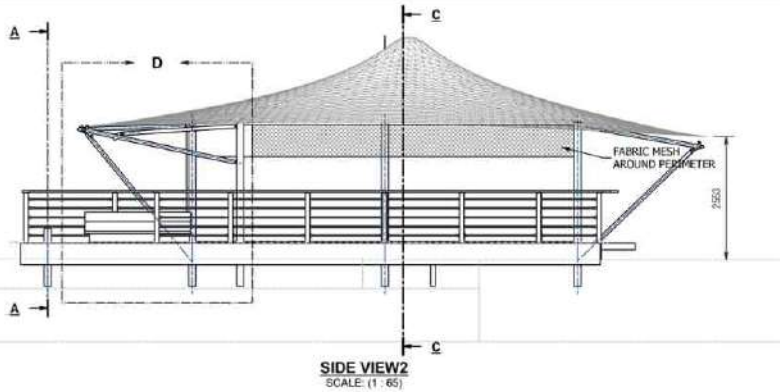
BUFFALOTHORN Guest Tent



Living area size:	Width 8.0m x Length 8.0m
Membrane area size:	Width 12.0m x Length 12.0m
Deck Area:	10.0m x 9.0m
Balcony:	16.0 m ²
Frame Material:	Timber
Membrane material selection:	Outer roof Architectural PVC Inner Tenting
Walling:	Ripstop
Wind load:	144km/h
https://www.idtcustomawnings.shop/buffalothorn	

SAVANNA Luxury Tents & Habitats

BUFFALOTHORN Guest Tent



SAVANNA Luxury Tents & Habitats



ACACIA Guest Tent



Living area size:	4.0m x Length 7.5m
Membrane area size:	4.2m x Length 9.5m
Deck Area:	4.2m x 9.5m
Balcony:	13.8m ²
Frame Material:	Cedarbrook Tenting Canvas/Rip Stop
Membrane material selection:	Outer Roof Rip Stop Inner Cedarbrook Tenting Canvas
Walling:	144km/h
Wind load:	
https://www.idtcustomawnings.shop/acacia-unit	

SAVANNA Luxury Tents & Habitats

ACACIA Guest Tent

SECTION B-B
SCALE: (1 : 40)

SECTION A-A
SCALE: (1 : 40)

PLAN / TOP VIEW

DETAIL -D-
SCALE: (1 : 10)

DETAIL -C-
SCALE: (1 : 12)

ISOMETRIC VIEW

SIDE ELEVATION

35x14 ST (Structural Timber Section)
35x14 ST (Structural Timber Section)
35x14 ST (Structural Timber Section)
35x14 ST (Structural Timber Section)
225x30 ST (Structural Timber Section)
225x30 ST (Structural Timber Section)
875 ST (Structural Timber Section)

185 215 250 125 1425 125 1035 435

1500 1500 1500 1500 1500 1500 1500 1500

1500 2830 3220 3000 2900

2250 425 435

3220 CLEARANCE HEIGHT
1715
20 TRILING
435

TYPICAL OUTER CANVAS TO BE RIPBLOCK 400 UNLESS OTHERWISE REQUIRED. COLOUR AS PER CLIENT'S REQUIREMENTS.

TYPICAL TRUSS ASSEMBLY PLATE AS PER ENGINEER'S SPECIFICATION.

TYPICAL INNER CANVAS TO BE RIPBLOCK 300 UNLESS OTHERWISE REQUIRED. COLOUR AS PER CLIENT'S REQUIREMENTS.

TYPICAL TRUSS TIMBER TRUSS FINISHED & TREATED AS PER CLIENT'S REQUIREMENTS.

TYPICAL 100x50 TIMBER TRUSS FINISHED & TREATED AS PER CLIENT'S REQUIREMENTS.

TYPICAL 100x50 TIMBER BRACE FINISHED & TREATED AS PER CLIENT'S REQUIREMENTS.

TYPICAL 100x50 TIMBER COLUMN FINISHED & TREATED AS PER CLIENT'S REQUIREMENTS.

TYPICAL TIMBER MILLIPOST AS PER APPLICABLE ENGINEERING STANDARD. FINISHED & TREATED AS PER CLIENT'S REQUIREMENTS.

TYPICAL 100x50 TIMBER BRACE FINISHED & TREATED AS PER CLIENT'S REQUIREMENTS.

OPTIONAL TIMBER CLADDING FINISHED & TREATED AS PER CLIENT'S REQUIREMENTS.

TYPICAL 100x50 GUMPOLE COLUMN FINISHED & TREATED AS PER ENGINEERING STANDARDS.

CANVAS SCREEN WITH CLEAR PVC WINDOW

CANVAS SCREEN WITH CLEAR PVC WINDOW

ISOMETRIC VIEW

DT TENSILE
10 DENHAM DRIVING PT (P) LTD
200/210/212
10 DENHAM DRIVE, DENHAM, VIC 3184
Tel: 03 9479 0000 | Fax: 03 9479 0001 | Email: sales@dt-tensile.com.au

2023/10/26
1:1
100%
DT TENSILE
DT TENSILE
General Project Assembly

SAVANNA Luxury Tents & Habitats



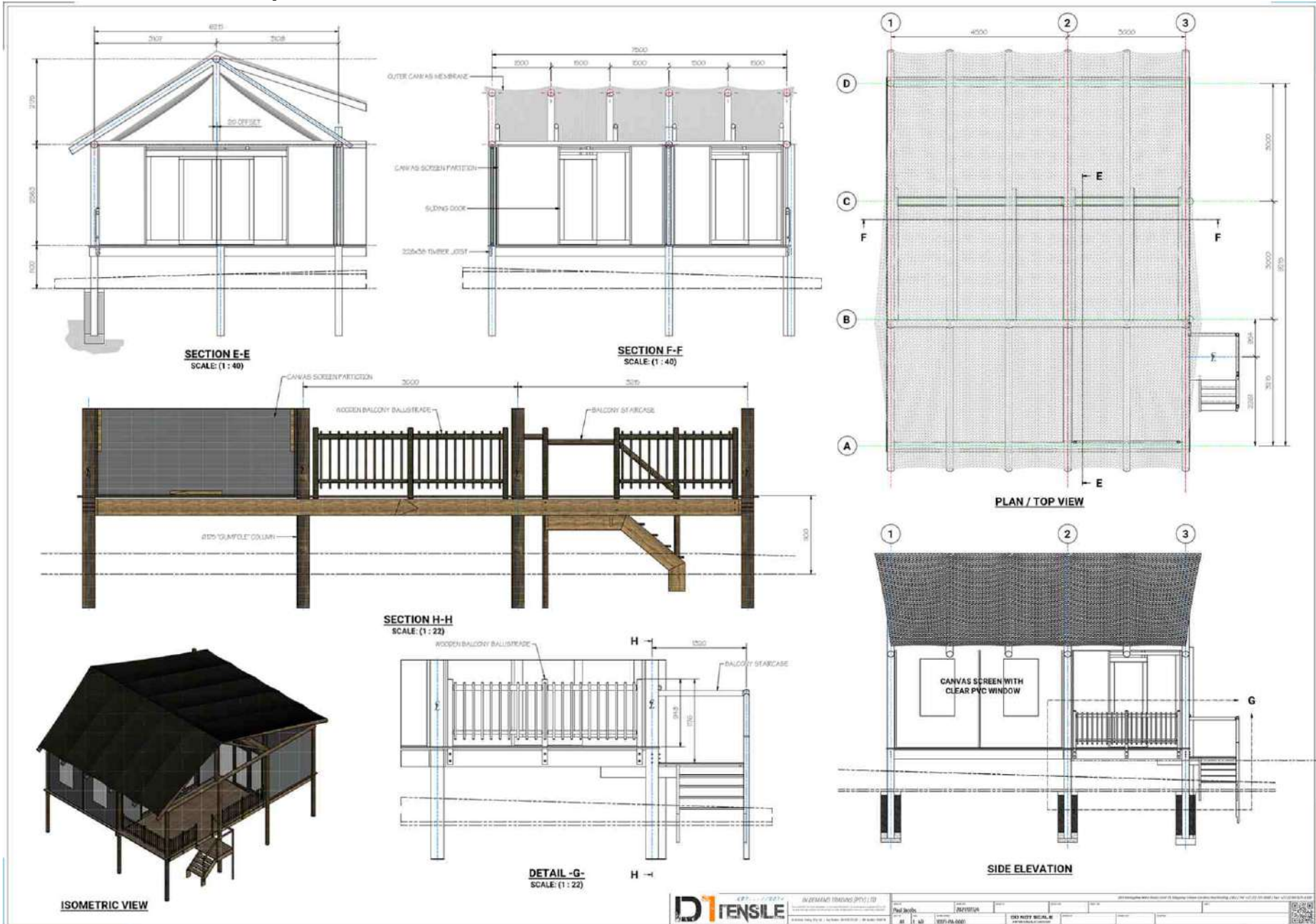
BUSHWILLOW Guest Tent



Living area size: Width 10.5m x Length 9.0m
Membrane area size: Width 10.5m x Length 10.2m
Deck Area: 10.0m x 9.5m:
Balcony: 12.0m²
Frame Material: Cedarbrook Tenting Canvas/Rip Stop
Membrane material selection: Outer Roof Rip Stop
Inner Cedarbrook Tenting Canvas
Walling: 144km/h
Wind load:
<https://www.idtcustomawnings.shop/bushwillow-unit>

SAVANNA Luxury Tents & Habitats

BUSHWILLOW Guest Tent



SAVANNA Luxury Tents & Habitats



BAOBAB Guest Tent



Living area size: Width 5.1m x Length 9.0m
Membrane area size: Width 5.1m x Length 11.3m
Deck Area: 5.1m x 11.3m:
Balcony: 11.5m²
Frame Material: Cedarbrook Tenting Canvas/Rip Stop
Membrane material selection: Outer Roof Rip Stop
Inner Cedarbrook Tenting Canvas
Walling: 144km/h
Wind load:
<https://www.idtcustomawnings.shop/baobab-unit>

SAVANNA Luxury Tents & Habitats



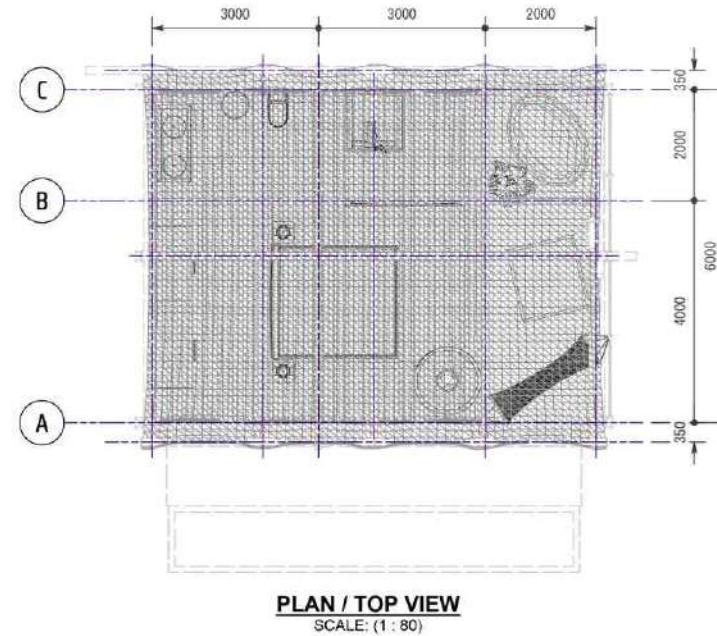
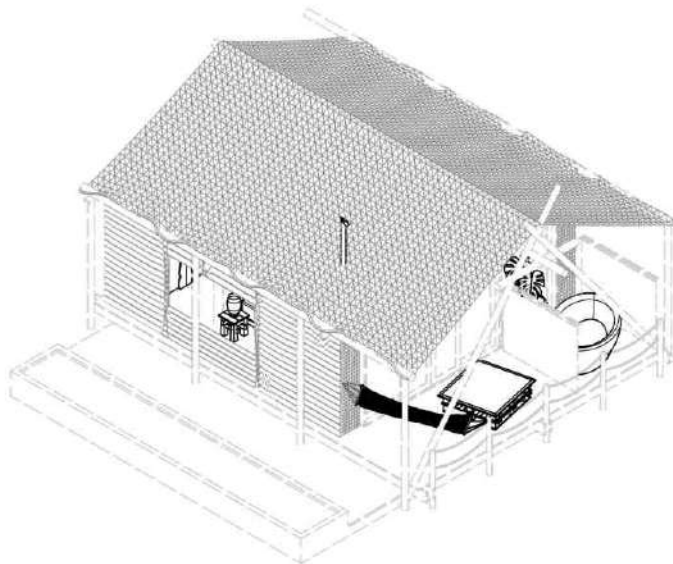
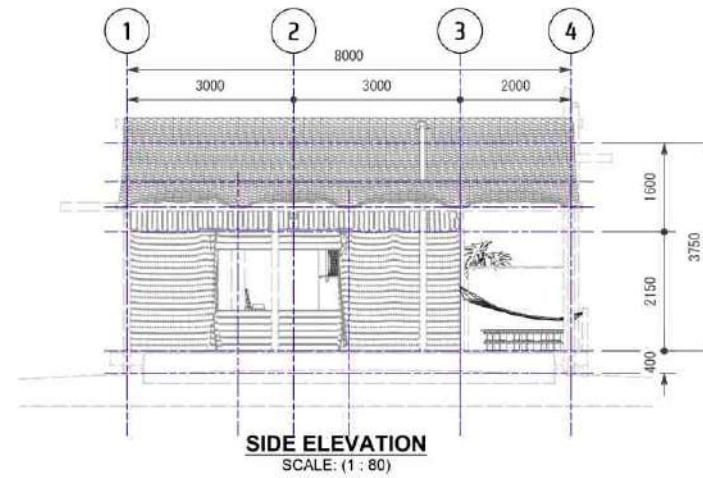
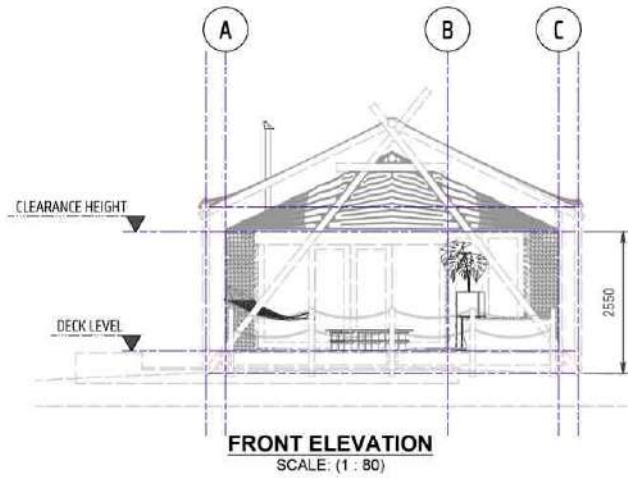
WHISTLING THORN Guest Tent



Living area size:	Width 6.0m x Length 6.0m
Membrane area size:	Width 7.0m x Length 8.0m
Deck Area:	6.0m x 8.0m
Balcony:	12.0m ²
Frame Material:	Wood
Membrane material selection:	Outer membrane Rip Stop Inner Cedarbrook Tenting Canvas
Walling:	Rip Stop
Wind load:	144km/h
https://www.idtcustomawnings.shop/whistlingthorn	

SAVANNA Luxury Tents & Habitats

WHISTING THORN Guest Tent



SAVANNA Luxury Tents & Habitats



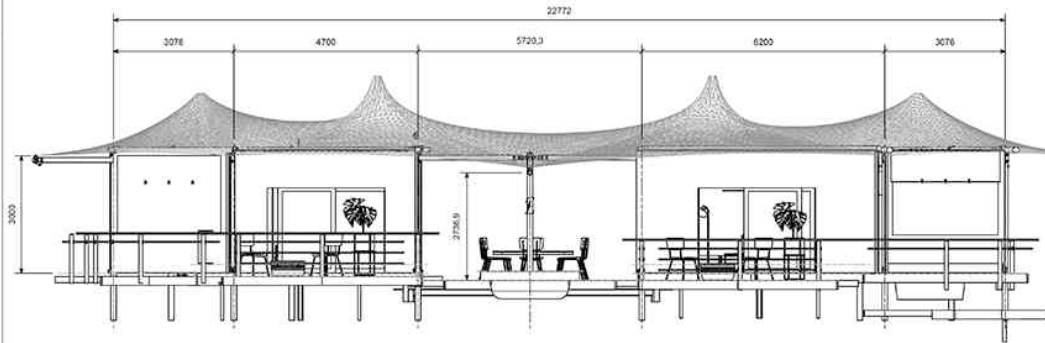
QUIVERTWIN Guest Tent



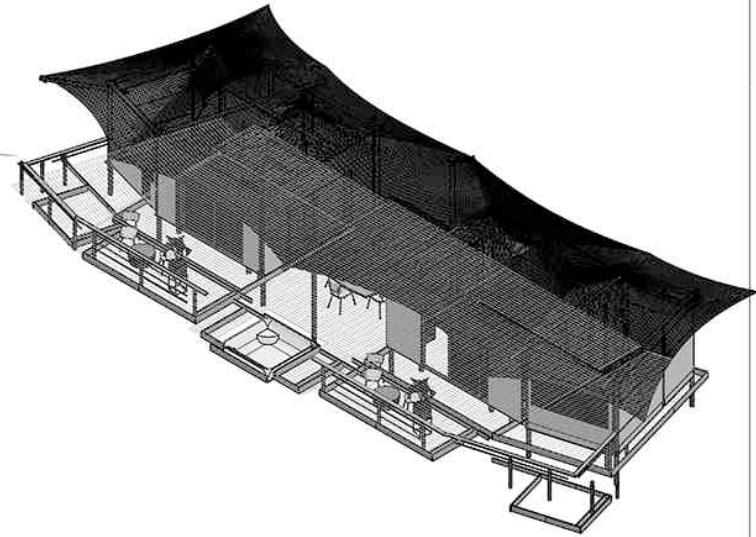
Living area size:	Width 19.0m x Length 5.0m
Membrane area	Width 25.0m x Length 10.0m
Deck Area:	22.7m x 7.7m
Balcony:	54.0 m ²
Frame Material:	Timber.
Membrane material selection:	Outer roof Architectural PVC inner Tenting
Walling:	Rip Stop
Wind load:	144km/h
https://www.idtcustomawnings.shop/quivertwinguestsuite	

SAVANNA Luxury Tents & Habitats

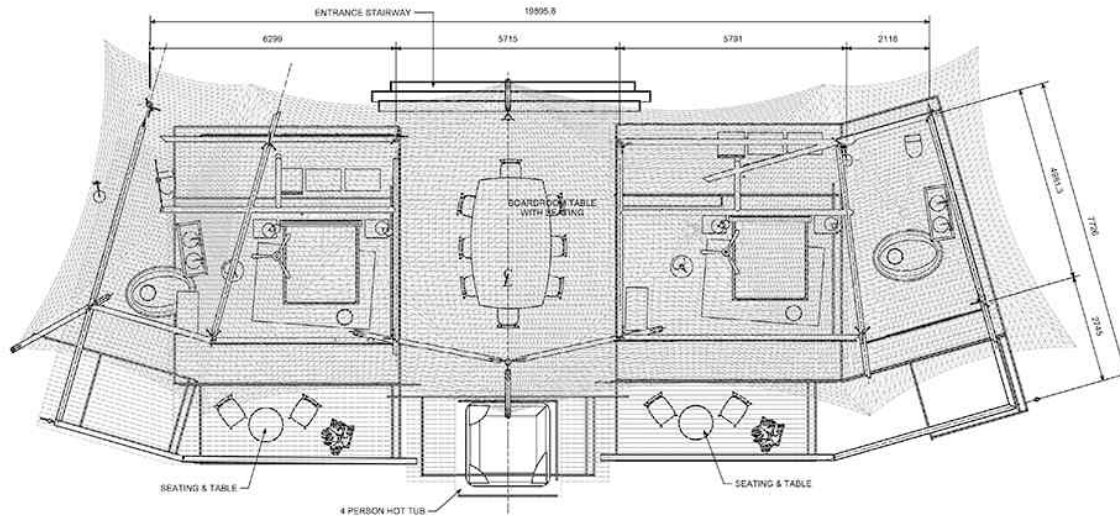
QUIVER TWIN Guest Tent



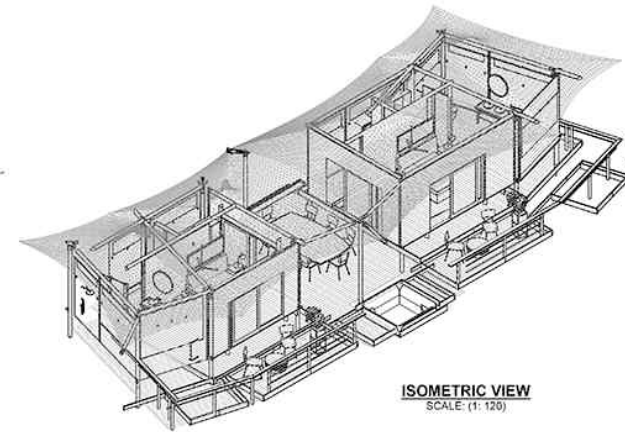
FRONT VIEW
SCALE: (1 : 80)



SIDE VIEW4
SCALE: (1 : 100)



PLAN / TOP VIEW
SCALE: (1 : 80)



ISOMETRIC VIEW
SCALE: (1 : 120)



SAVANNA
LUXURY TENTS & HABITATS

DI TENSILE
EST. 1972

MEMBRANE CONSTRUCTION
EST. 1972
100% POLYESTER
100% POLYURETHANE
100% POLYESTER
100% POLYURETHANE

PAUL JACOBS	10076 - Quiver Twin Guest Suite	DO NOT SCALE	10076-GA-0001	MEMBRANE Q1 Assembly
1:80				



SAVANNA Luxury Tents & Habitats



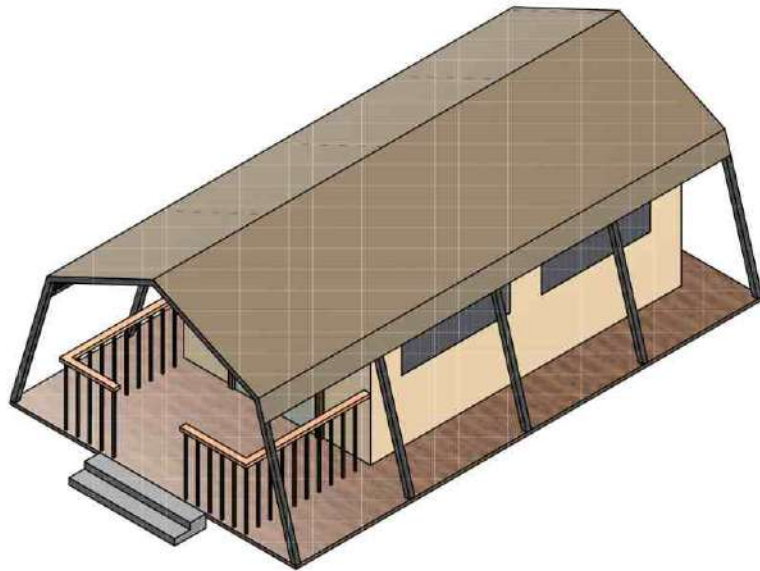
BUSH BABY Guest Tent



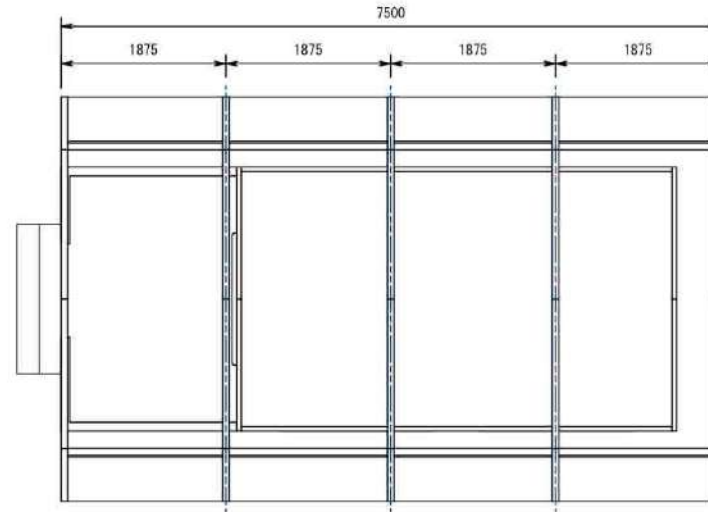
Living area size: Width 3.6m x Length 5.6m
Membrane area: Width 4.6m x Length 7.5m
Deck Area: 4.6m x 1.9m
Balcony: 8.74 m²
Frame Material: Steel.
Membrane material selection: Outer roof Rip Stop
inner Rip Stop
Walling: Rip Stop
Wind load: 144km/h
<https://www.idtcustomawnings.shop/bushbaby-guest-tent>

SAVANNA Luxury Tents & Habitats

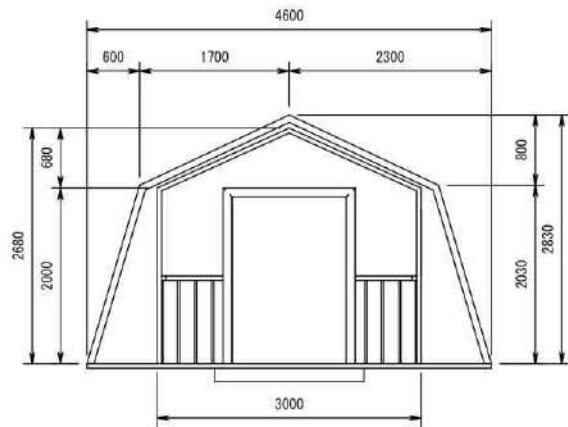
BUSH BABY Guest Tent



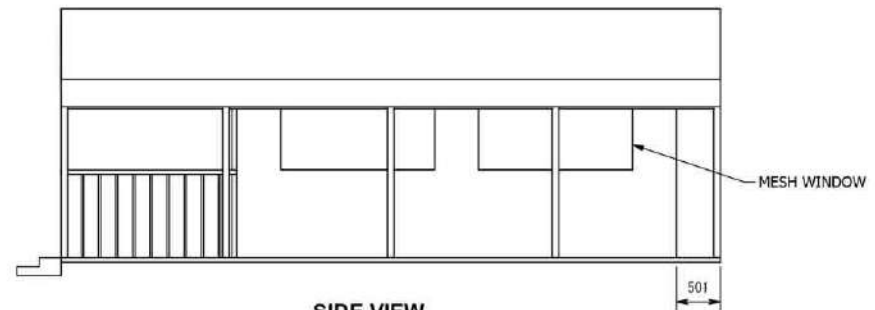
SIDE VIEW
SCALE: (1 : 50)



TOP VIEW
SCALE: (1 : 50)



FRONT VIEW
SCALE: (1 : 50)



SIDE VIEW
SCALE: (1 : 50)



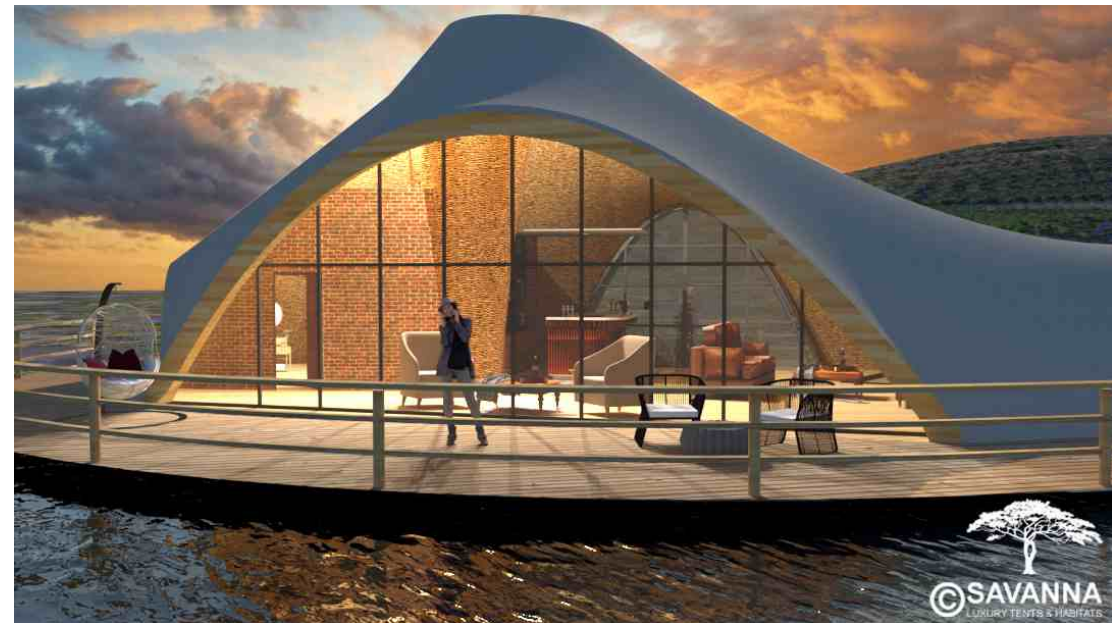
SAVANNA Luxury Tents & Habitats

GUEST UNITS
(Steel Frames & Solid Walls)

SAVANNA Luxury Tents & Habitats



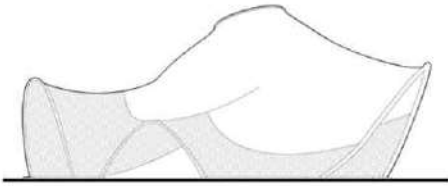
STUDIO ELEVATED Guest Unit



190 m²
190 m²
80 m²
30 m²
inner walls rattan mat, frame steel coated
outer roof Verseidag 1015/903
Rattan matting, Knauf insulation
144km/h

SAVANNA Luxury Tents & Habitats

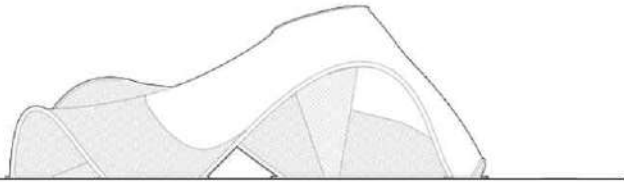
STUDIO Guest Unit



CONCEPT 001



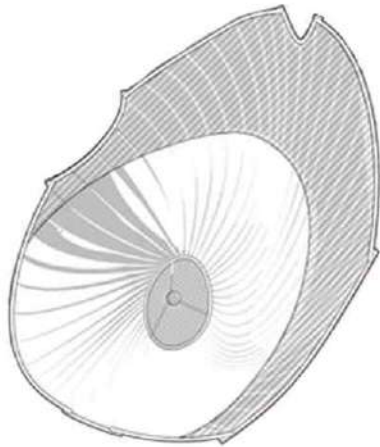
CONCEPT 007



CONCEPT 002



CONCEPT 006



CONCEPT 003



CONCEPT 004



CONCEPT 005



IN DEMAND TRADING (PTY) LTD

THE CONTENT OF THIS DRAWING IS THE SOLE PROPERTY OF IN DEMAND TRADING (PTY) LTD. IT SHALL NOT BE COPIED, OR DISCLOSED TO ANY THIRD PARTY WITHOUT THE COMPANY'S CONSENT.

In Demand Trading (Pty) Ltd | Reg Number: 2014/001311/07 | VAT Number: 1544316

NAME OF PROJECT	DATE	SCALE	PROJECT NO	PROJECT NAME	PROJECT NO	PROJECT NAME
Marc du Plessis					10015 SAVANNA 6 STAR LODGE MARA	
DATE	SCALE	PROJECT NO	PROJECT NAME	PROJECT NO	PROJECT NAME	PROJECT NO
A3	1:80	10015-PA-001	DO NOT SCALE			

281 Haregloof West Road | Unit 19, Sleeping Straws Garden | Northcliff, 2067 | Tel: +27 (0) 11 8581 | Fax: +27 (0) 11 625-6500



SAVANNA Luxury Tents & Habitats



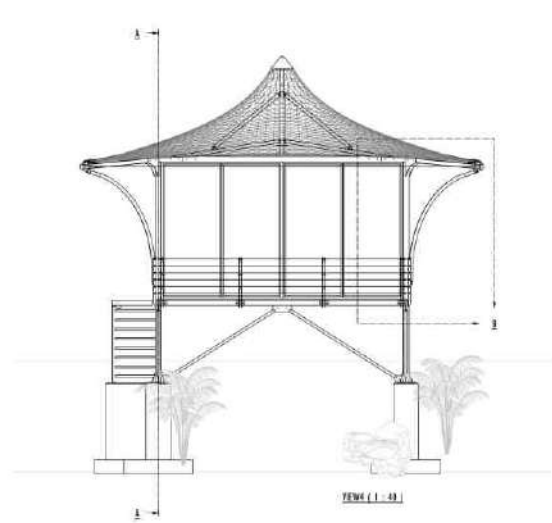
STUDIO ELEVATED Guest Unit



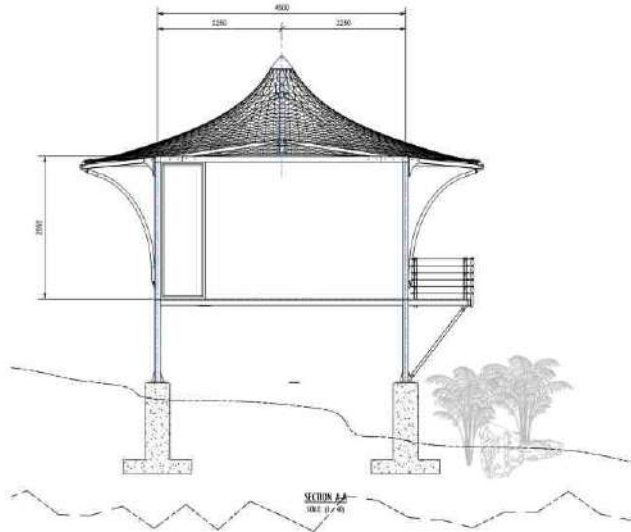
Living area size:	Width 4.5m x Length 4.5m
Membrane area	Width 6.0m x Length 6.0m
Deck Area:	4.5m x 6.5m
Balcony:	5.4 m ²
Frame Material:	Universal Ibeams and CHS Tubing.
Membrane material selection:	Outer roof Ferrari 402 Inner Thermoflex
Walling:	Fibre Cement board with High Density Polyurethane Core
Wind load:	144km/h
https://www.idtcustomawnings.shop/studioguestsuite	

SAVANNA Luxury Tents & Habitats

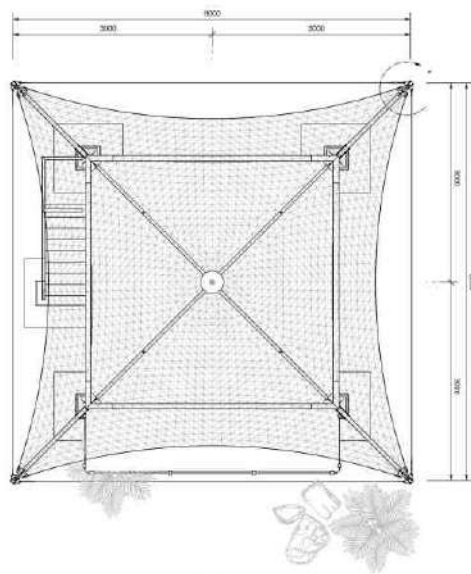
STUDIO Guest Unit



VIEW 1 (1-4)



SECTION 1-1



PLAN | TOP VIEW
1 of 10



PART LIST		REVISIONS		REVISIONS	
NO	REF	REV	DESCRIPTION	NO	DESCRIPTION
1		1	2023-12-01	1	Issue Set 01 (Open Work Items)
2		1	2023-12-01	2	Issue Set 01 (Open Work Items)
3		1	2023-12-01	3	Issue Set 01 (Open Work Items)
4		1	2023-12-01	4	Issue Set 01 (Open Work Items)
5		1	2023-12-01	5	Issue Set 01 (Open Work Items)
6		1	2023-12-01	6	Issue Set 01 (Open Work Items)
7		1	2023-12-01	7	Issue Set 01 (Open Work Items)
8		1	2023-12-01	8	Issue Set 01 (Open Work Items)
9		1	2023-12-01	9	Issue Set 01 (Open Work Items)
10		1	2023-12-01	10	Issue Set 01 (Open Work Items)
11		1	2023-12-01	11	Issue Set 01 (Open Work Items)
12		1	2023-12-01	12	Issue Set 01 (Open Work Items)
13		1	2023-12-01	13	Issue Set 01 (Open Work Items)
14		1	2023-12-01	14	Issue Set 01 (Open Work Items)
15		1	2023-12-01	15	Issue Set 01 (Open Work Items)
16		1	2023-12-01	16	Issue Set 01 (Open Work Items)
17		1	2023-12-01	17	Issue Set 01 (Open Work Items)
18		1	2023-12-01	18	Issue Set 01 (Open Work Items)
19		1	2023-12-01	19	Issue Set 01 (Open Work Items)
20		1	2023-12-01	20	Issue Set 01 (Open Work Items)
21		1	2023-12-01	21	Issue Set 01 (Open Work Items)
22		1	2023-12-01	22	Issue Set 01 (Open Work Items)
23		1	2023-12-01	23	Issue Set 01 (Open Work Items)
24		1	2023-12-01	24	Issue Set 01 (Open Work Items)
25		1	2023-12-01	25	Issue Set 01 (Open Work Items)
26		1	2023-12-01	26	Issue Set 01 (Open Work Items)
27		1	2023-12-01	27	Issue Set 01 (Open Work Items)
28		1	2023-12-01	28	Issue Set 01 (Open Work Items)
29		1	2023-12-01	29	Issue Set 01 (Open Work Items)
30		1	2023-12-01	30	Issue Set 01 (Open Work Items)
31		1	2023-12-01	31	Issue Set 01 (Open Work Items)
32		1	2023-12-01	32	Issue Set 01 (Open Work Items)
33		1	2023-12-01	33	Issue Set 01 (Open Work Items)
34		1	2023-12-01	34	Issue Set 01 (Open Work Items)
35		1	2023-12-01	35	Issue Set 01 (Open Work Items)
36		1	2023-12-01	36	Issue Set 01 (Open Work Items)
37		1	2023-12-01	37	Issue Set 01 (Open Work Items)
38		1	2023-12-01	38	Issue Set 01 (Open Work Items)
39		1	2023-12-01	39	Issue Set 01 (Open Work Items)
40		1	2023-12-01	40	Issue Set 01 (Open Work Items)
41		1	2023-12-01	41	Issue Set 01 (Open Work Items)
42		1	2023-12-01	42	Issue Set 01 (Open Work Items)
43		1	2023-12-01	43	Issue Set 01 (Open Work Items)
44		1	2023-12-01	44	Issue Set 01 (Open Work Items)
45		1	2023-12-01	45	Issue Set 01 (Open Work Items)
46		1	2023-12-01	46	Issue Set 01 (Open Work Items)
47		1	2023-12-01	47	Issue Set 01 (Open Work Items)
48		1	2023-12-01	48	Issue Set 01 (Open Work Items)
49		1	2023-12-01	49	Issue Set 01 (Open Work Items)
50		1	2023-12-01	50	Issue Set 01 (Open Work Items)
51		1	2023-12-01	51	Issue Set 01 (Open Work Items)
52		1	2023-12-01	52	Issue Set 01 (Open Work Items)
53		1	2023-12-01	53	Issue Set 01 (Open Work Items)
54		1	2023-12-01	54	Issue Set 01 (Open Work Items)
55		1	2023-12-01	55	Issue Set 01 (Open Work Items)
56		1	2023-12-01	56	Issue Set 01 (Open Work Items)
57		1	2023-12-01	57	Issue Set 01 (Open Work Items)
58		1	2023-12-01	58	Issue Set 01 (Open Work Items)
59		1	2023-12-01	59	Issue Set 01 (Open Work Items)
60		1	2023-12-01	60	Issue Set 01 (Open Work Items)

SAVANNA
LUXURY TENTS
AND HABITATS

SAVANNA Luxury Tents & Habitats



STUDIO ELEVATED Guest Unit



Living area size:	Width 5.6m x Length 12.89m
Membrane area	Width 10.0m x Length 17.0m
Deck Area:	10.0m x 24.0m
Balcony:	42 m ²
Frame Material:	Universal Ibeams and CHS Tubing.
Membrane material selection:	Outer roof Ferrari 402 Inner Thermoflex
Walling:	Fibre Cement board with High Density Polyurethane Core
Wind load:	144km/h
https://www.idtcustomawnings.shop/deluxguestsuite	

SAVANNA Luxury Tents & Habitats



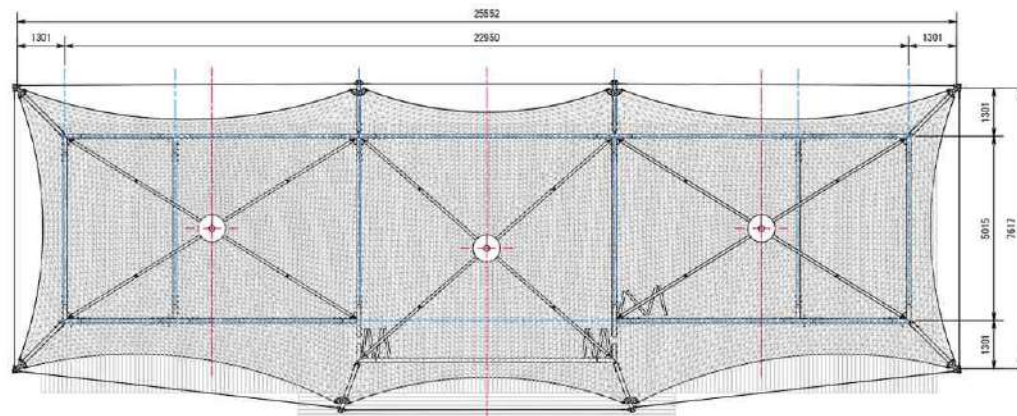
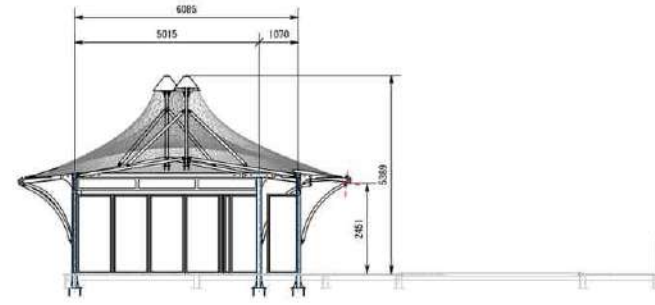
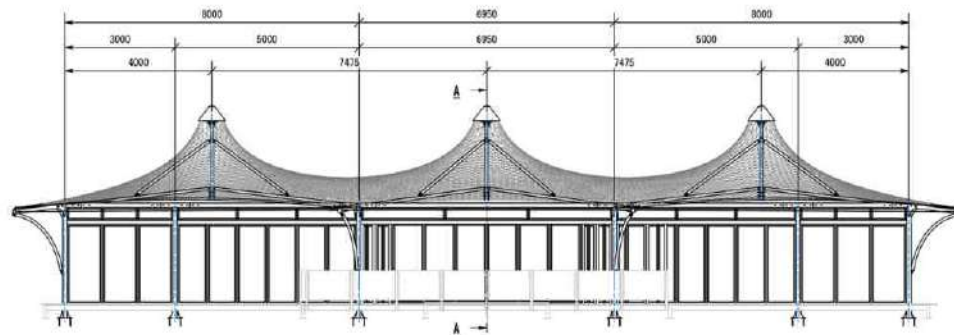
FAMILY Guest Unit



Living area size:	Width 5.1m x Length 22.9m
Membrane area	Width 7.6m x Length 25.5m
Deck Area:	18.0m x 26.0m
Balcony:	81 m ²
Frame Material:	SHS Tubing.
Membrane material selection:	Outer roof Ferrari 402 Inner Thermoflex
Walling:	Fibre Cement board with High Density Polyurethane Core Glass Sliding Doors
Wind load:	144km/h
https://www.idtcustomawnings.shop/family-suite	

SAVANNA Luxury Tents & Habitats

FAMILY Guest Unit



IN DEMAND TRADING (PTY) LTD
100 GARDEN OF EDEN DRIVE, SANDHURST, 7608
Tel: +27 (0)11 853 1111 | Fax: +27 (0)11 853 1112
www.d1tensile.com

PROJECT	NO. OF SHEETS	SHEET NO.	DATE	SCALE	BY	CHECKED	APPROVED
30152-PA-0001	1	1	1:85	DD NOT SCALE			



SAVANNA Luxury Tents & Habitats

MAIN AREAS
(Canvas Walls)

SAVANNA Luxury Tents & Habitats

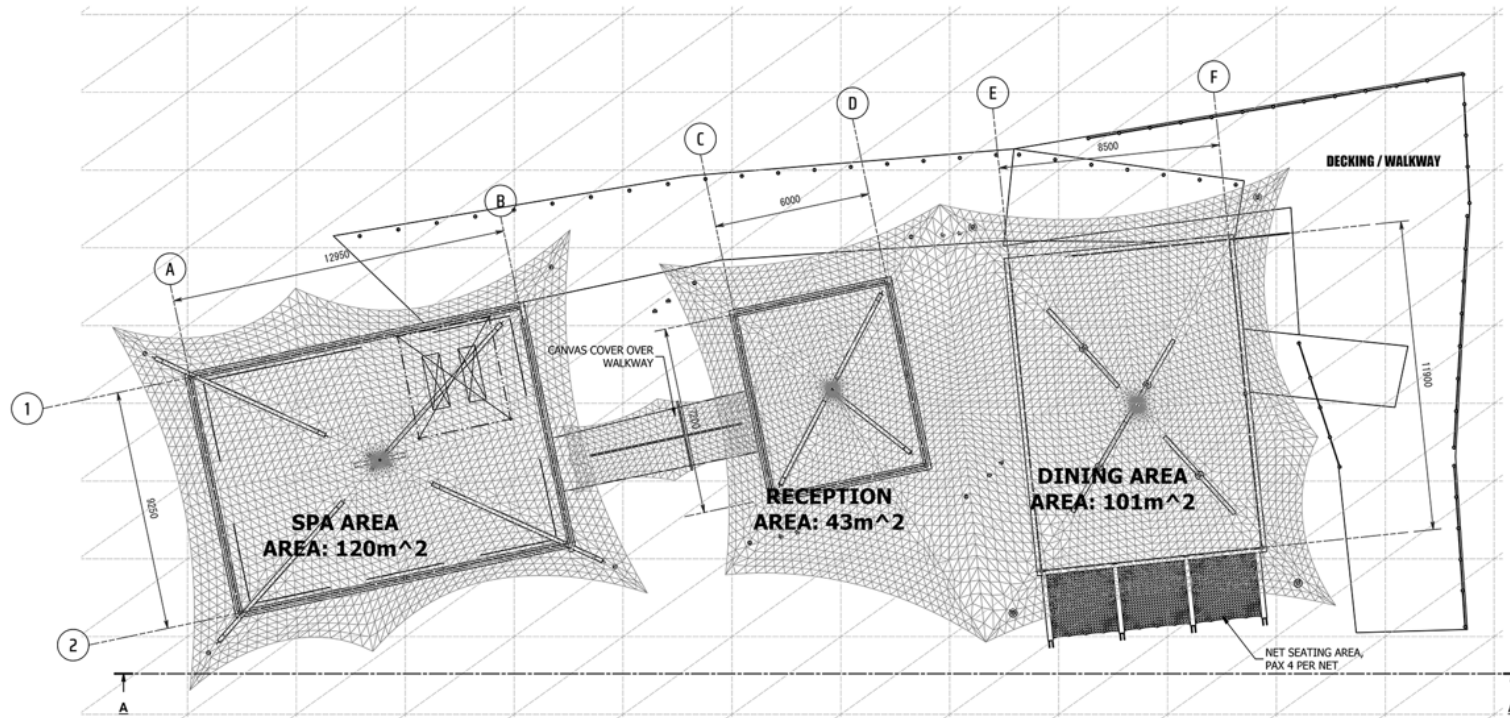
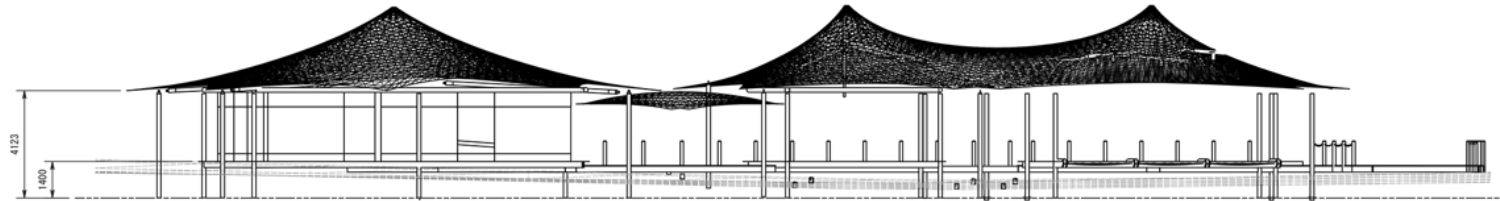
MAIN AREA 40 Pax



Main Area 40 Pax - SPA, Dining Room, Reception

SAVANNA Luxury Tents & Habitats

MAIN AREA 40 Pax



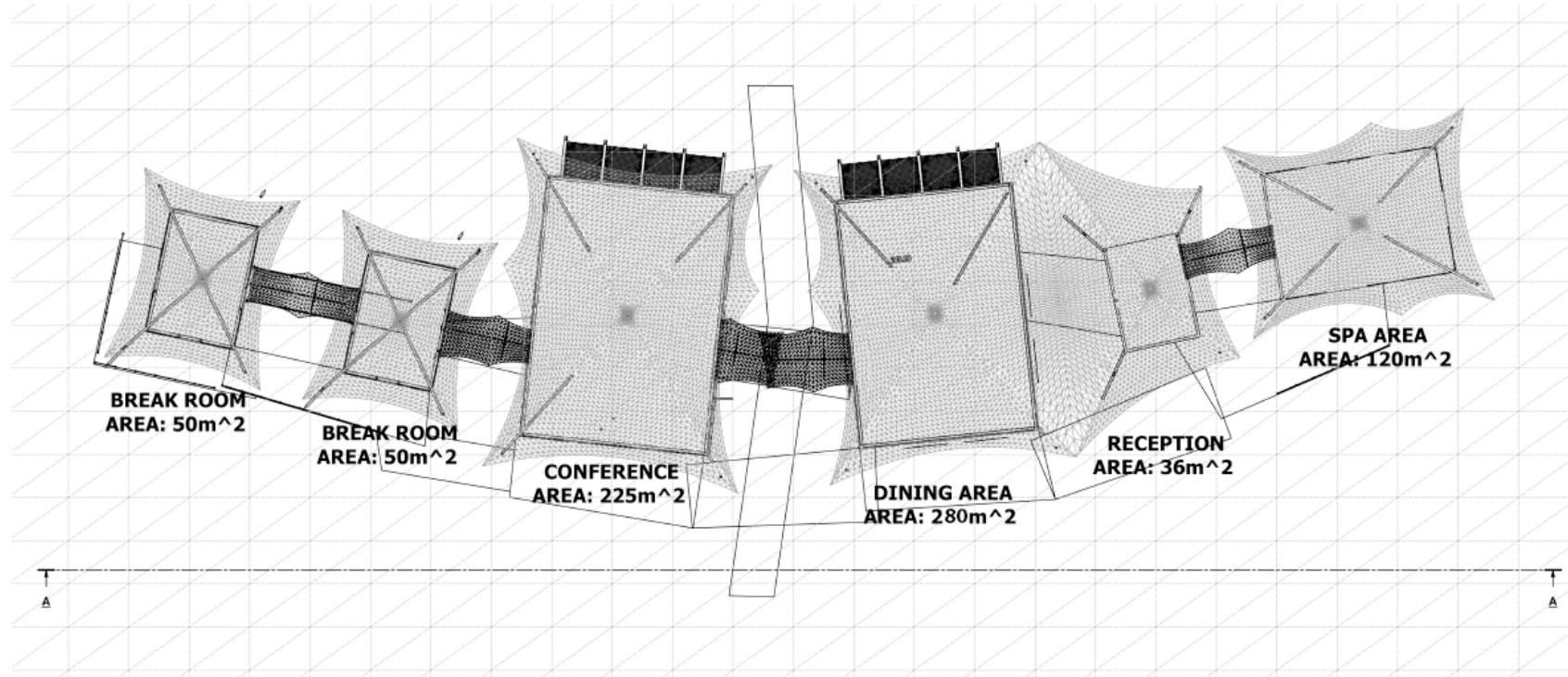
PLAN / TOP VIEW
SCALE: (1 : 120)

SAVANNA Luxury Tents & Habitats

MAIN AREA 150 Pax



Main Area 100 Pax - SPA, Dining Room, Reception, Conference & 2 Break Away Room



PLAN / TOP VIEW
SCALE: (1 : 200)



SECTION A-A
SCALE: (1 : 200)



SAVANNA Luxury Tents & Habitats

MAIN AREA 100 Pax



EXAMPLES

SAVANNA Luxury Tents & Habitats



SAVANNA Luxury Tents & Habitats



SAVANNA Luxury Tents & Habitats



SAVANNA Luxury Tents & Habitats



SAVANNA Luxury Tents & Habitats

FACILITIES TENTS

SAVANNA Luxury Tents & Habitats



SAVANNA Luxury Tents & Habitats



SAVANNA Luxury Tents & Habitats

AUXILIARY SERVICES

SAVANNA Luxury Tents & Habitats



Borehole and water filtration



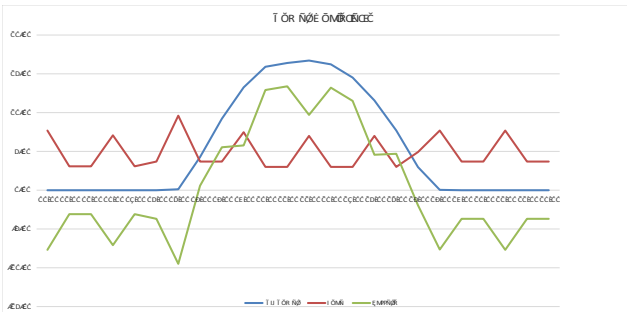
SAVANNA Luxury Tents & Habitats

Solar Power and back up power

Power calculation

15-Sep

#	Description	Peak power (kW)	Consumption per day (kWh)	Units required	Total peak power (kW)	Utilization profile	Total consumption per day (kWh)
1	Standard Guest Tents 20 off	10	25	20	200	15%	1800
2	Staff accommodation	20	45	3	60	30%	3240
3	Reception area	2,5	10	1	2,5	30%	240
4	Spa	8	15	1	8	35%	360
5	Bar/social area	8	45	1	8	10%	1080
6	Restaurant/Kitchen including cool room	15	45	1	15	25%	1080
7	Laundry & housekeeping	3,5	22	1	3,5	25%	528
8	Engineering Workshop & CCTV	2,5	10	1	2,5	10%	240
9	Water Filtration	15	150	1	15	20%	3600
10	Waste water treatment	10	40	1	10	15%	960



Adjusted peak demand per day	259,6	kW	324,5	kVA
Total power required per day	13128	kWh	16410	kVA
Proposed solar array in kW			972	kW
Power delivered by solar array	4376	kWh	5470	kVA
Battery storage required			973,5	kVA
Proposed generator required			389,4	kW



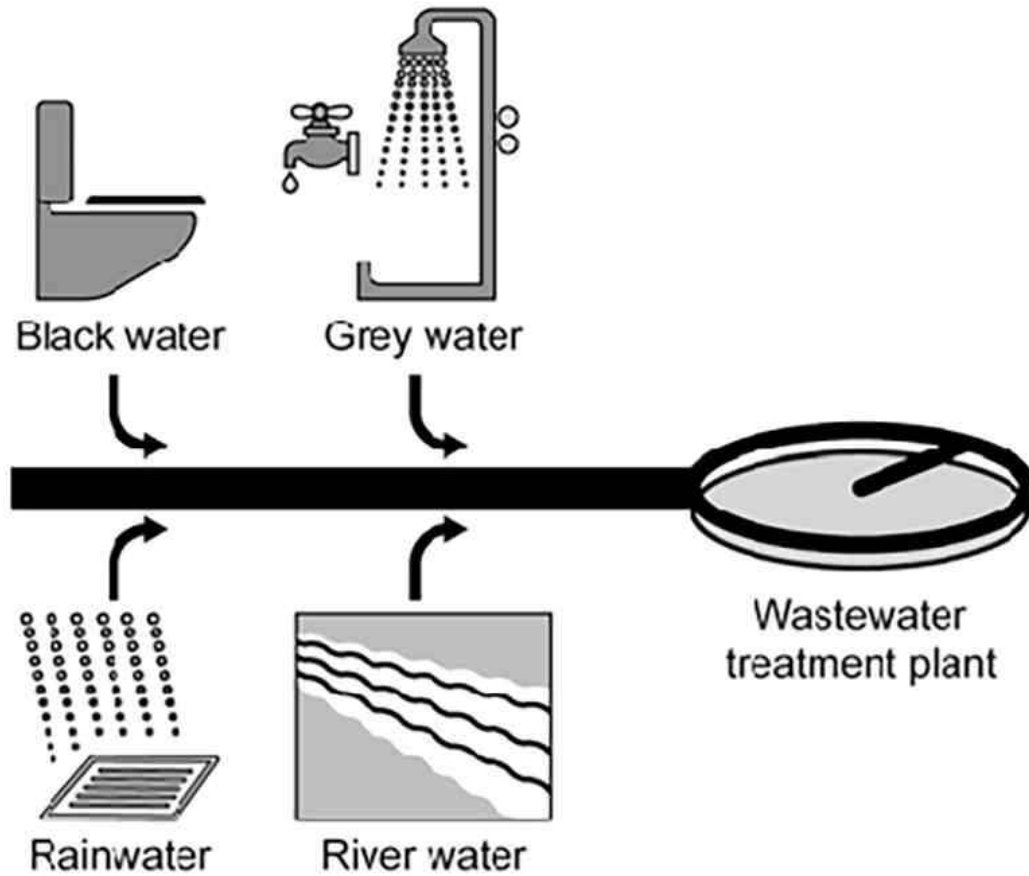
SAVANNA Luxury Tents & Habitats

Desalination



SAVANNA Luxury Tents & Habitats

Waste water management



idtcustomawnings.com/glamping
sales@idtcustomawnings.com
+27 (0)11 791 1888



click icon
selected
to launch