

**PADEL** Tennis

**IDT** Custom Awnings

# IDT Custom Awnings

## Introduction to Tensile Padel Court Roofs:

Tensile padel court roofs are architecturally innovative and offer a unique solution to weather-related challenges as well as enhancing the playing experience.

### Purpose:

Tensile padel court roofs are primarily designed to protect the court from outdoor elements such as rain, sun glare, wind, and debris. By installing a roof over the court, players can enjoy uninterrupted gameplay regardless of the weather conditions, extending the usability of the court throughout the year.

### Materials:

Tensile are lightweight, translucent and offer UV protection. They allow natural light to penetrate the court while providing shelter from rain and sun. Our Tensile Roofs are made of PVC-coated polyester with a PVDF coating. They are weather-resistant and carry a 10 year warranty on the membrane and have an expected lifespan of 15-20 years. Tensile fabric roofs provide shade and shelter while allowing air circulation.

### Installation and Construction:

We provide a comprehensive structural analysis report with every project. It's essential to comply with local building codes and regulations governing the construction of roofs and structures to ensure safety and structural integrity. All our designs comply with SABS 0160 wind load codes.



## **IDT** Custom Awnings

### Benefits:

**Weather Protection:** Padel court roofs allow players to enjoy the game in various weather conditions, including rain, sun, and wind.

**Extended Playing Hours:** With a roof in place, padel courts can be used throughout the day and year, even during inclement weather or in regions with extreme temperatures.

**Enhanced Comfort:** Roofs provide shade and shelter, creating a more comfortable playing environment for players and spectators alike.

**Long-Term Investment:** Installing a roof over a padel court can increase its value and appeal, making it a worthwhile investment for facilities looking to attract players and generate revenue.

Overall, padel court roofs offer a practical solution to weather-related challenges, extending the usability of the court and enhancing the playing experience for enthusiasts. Whether fixed or retractable, roofs provide shelter and protection, allowing players to enjoy the game in various conditions.



# TIMELINE

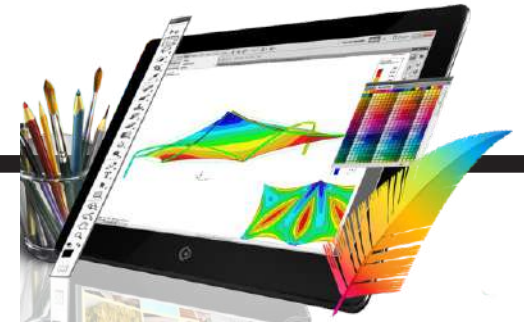


## DESIGN



In general the design process takes about 7 working days. This includes the layout drawings, renders and membrane patterns.

## ANALYSIS



Structural analysis is conducted by country and by region in accordance with the required wind load codes of the region. This process can take up to a week depending on the complexity of the design.

# IDT Custom Awnings

## FABRICATION



Fabrication process takes about 4 weeks. This will include the costing, procurement, receipt of materials, fabrication & coating.

## INSTALLATION



The time on site is totally dependant on the complexity of the structure. Site visits are normally broken up into foundations and the installation of the actual structure.



END  
TIMELINE

# FINDING YOU IN EVERY DETAIL

When deciding on the perfect product for your needs there are a number of issues that need to be taken into account.

Amongst these are whether the structure needs to be waterproof or just for sun protection. Must the structure be water proof to the building. What is the life expectancy you require out of the membrane. Will you be adding drop down or glass around the structure in the future



Function of the structure to provide shade or rain protection. What weather conditions can we expect & what weather conditions need to be taken into account for the design.



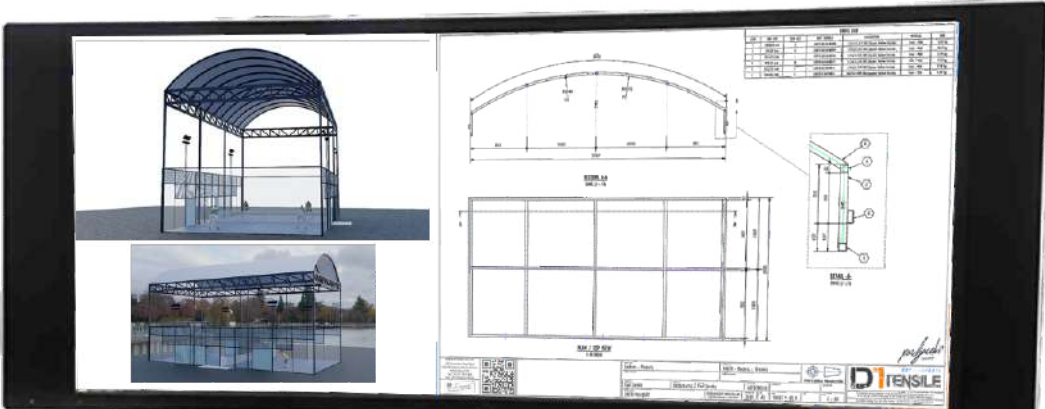
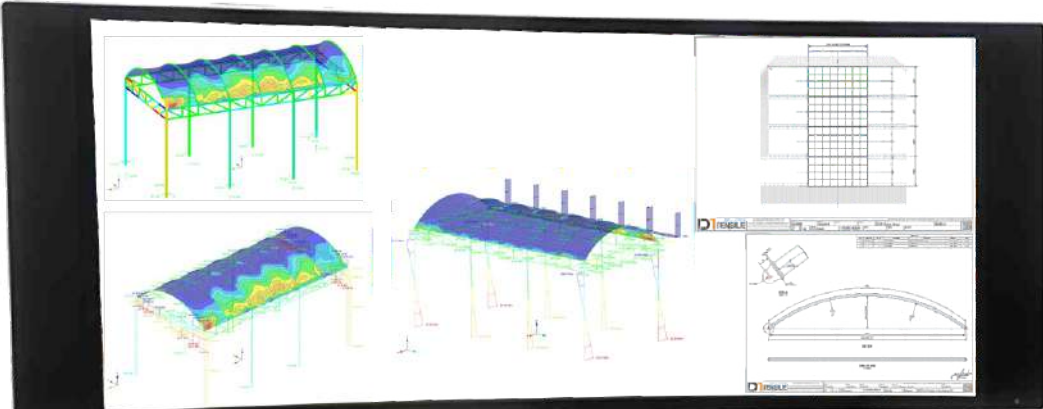
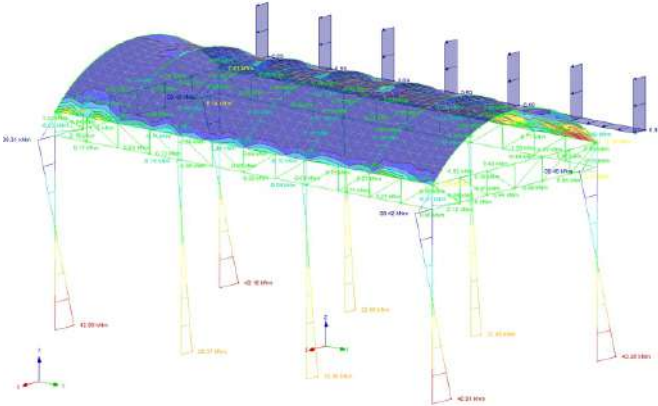
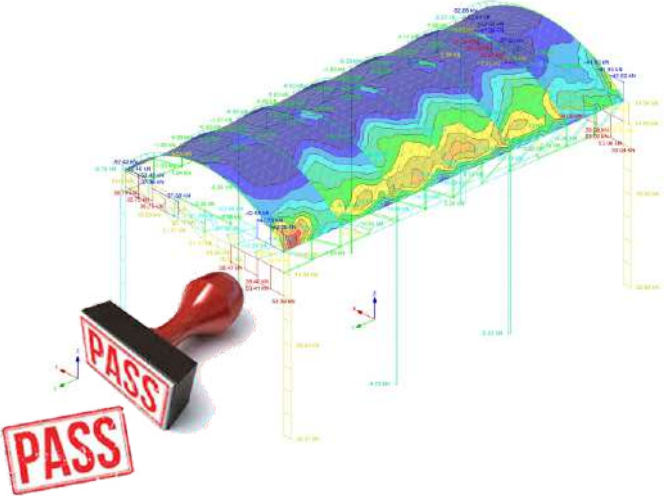
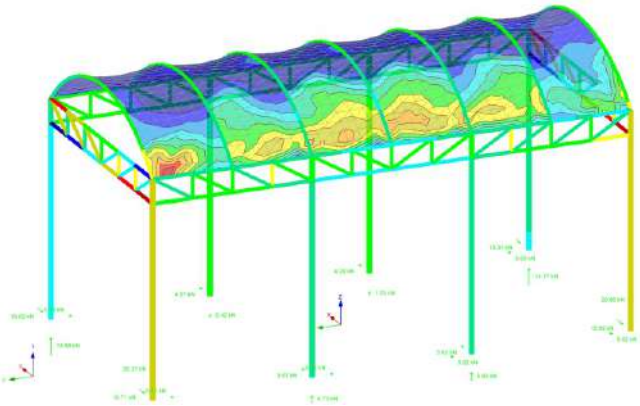
Preferred design. There are many designs that we can offer in both standard and bespoke designs. We work with you to determine the best fit for your requirements.



Do you require an engineer's sign off on the project or do you just require the structural analysis report that we routinely offer to our clients for each project we undertake.

**IDT** Custom Awnings

**INSIST ON A STRUCTURAL REPORT**



**IDT** Custom Awnings

**1 Single Court Cover**  
**(12 000 x 22 000mm)**



**2 Double Court**  
**(25 000 x 22 000mm)**

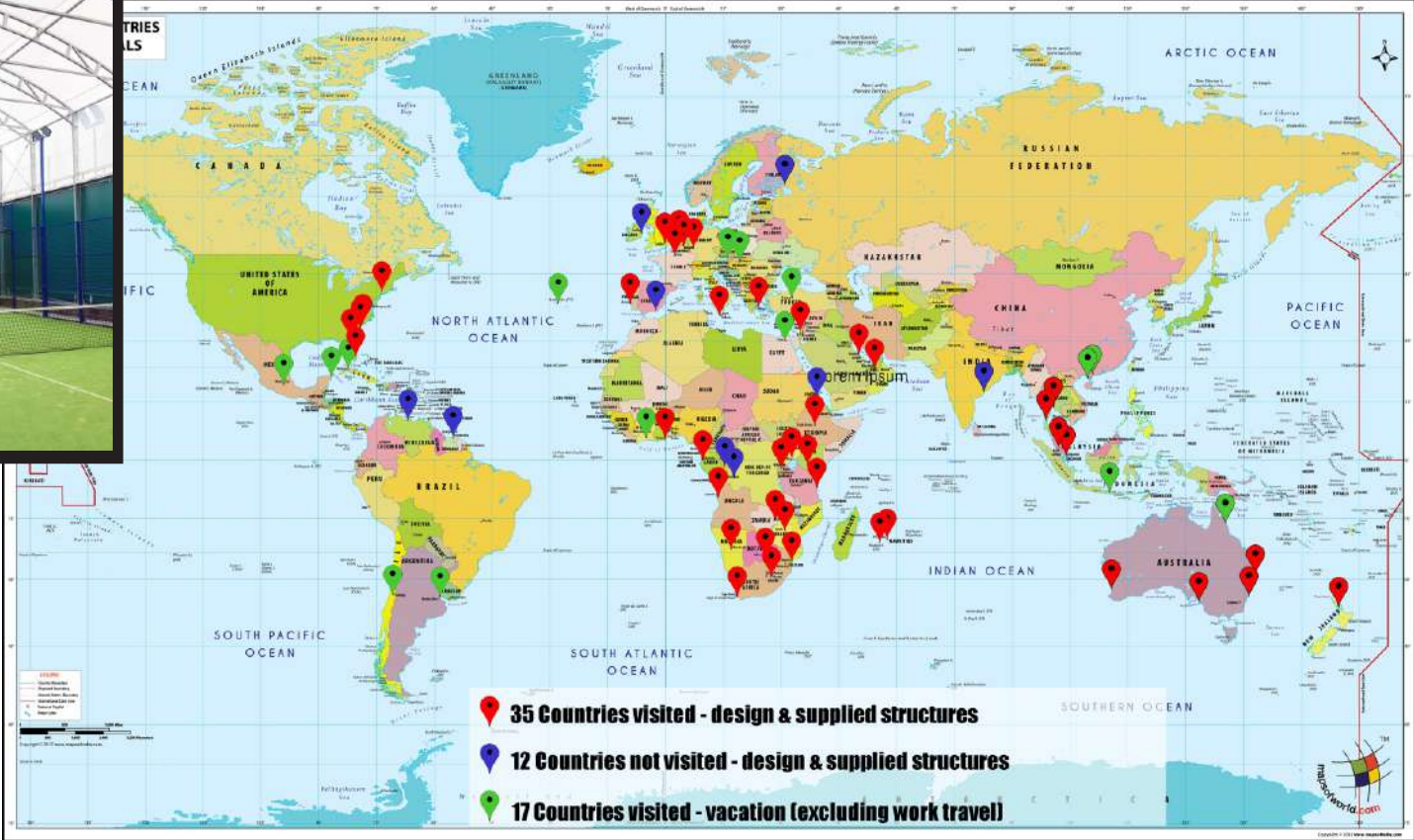




# IDT Custom Awnings



After 32 years in the industry we have completed projects in 47 countries.



PADEL  
**TENNIS**  
ENCLOSURES

**IDT** Custom Awnings

Design IDT0010



**IDT** Custom Awnings

Design IDT0020



**IDT** Custom Awnings

Design IDT0030



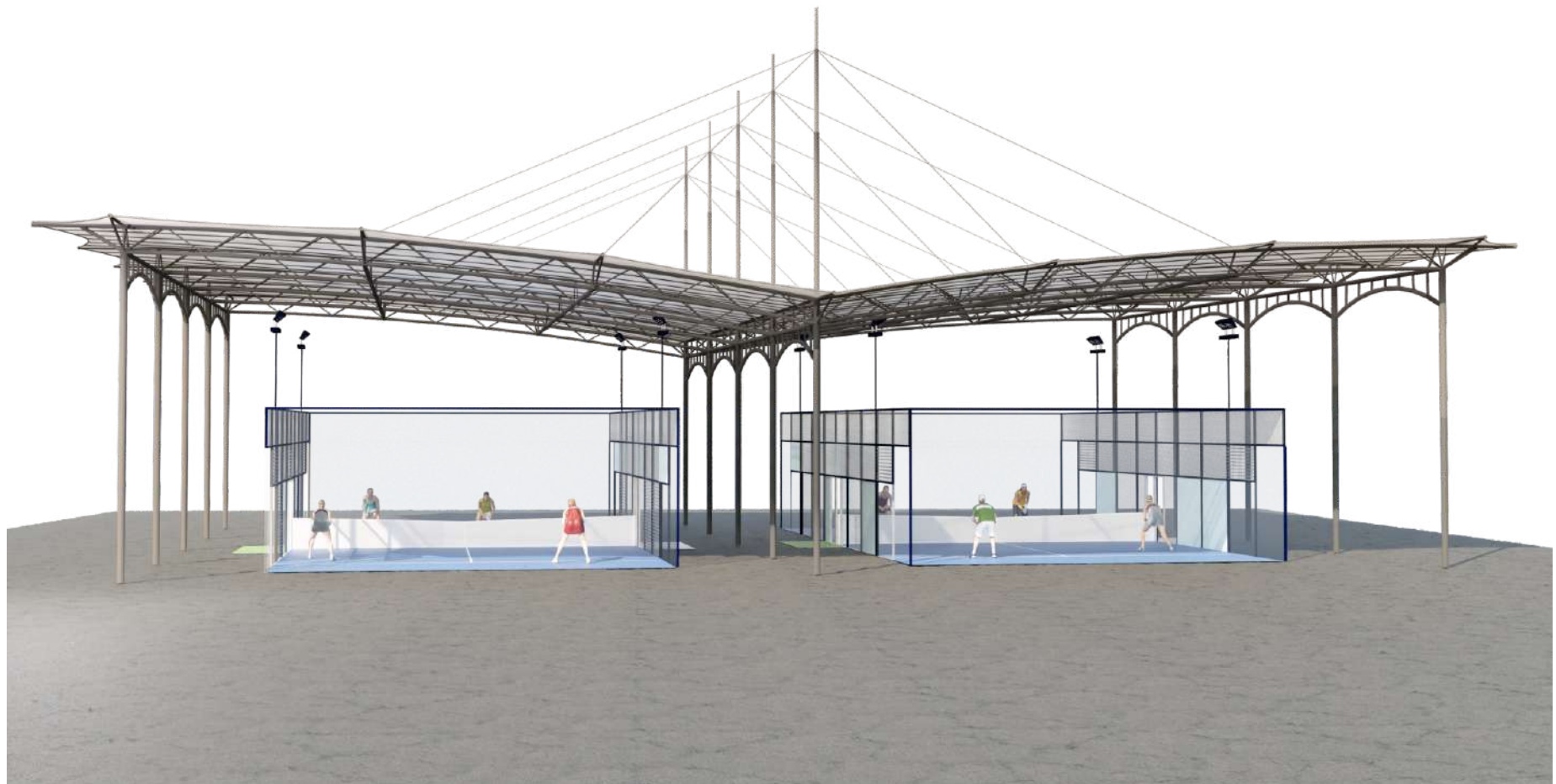
**IDT** Custom Awnings

Design IDT0040



**IDT** Custom Awnings

Design IDT0050



**IDT** Custom Awnings

Design IDT0060





**IDT** Custom Awnings

Design IDT0070

Shade Cloth Extreme 32



**IDT** Custom Awnings

Design IDT0080

Solid Roof



**IDT** Custom Awnings

## **Solaris Flexible Solar Power Panels**

Solar power is a renewable energy source, meaning it is abundant and inexhaustible, unlike fossil fuels.

**Low Operating Costs:** Once installed, solar panels have minimal operating costs since sunlight is free and abundant.

**Environmentally Friendly:** Solar power generation produces no greenhouse gas emissions or air pollutants, making it environmentally friendly and contributing to reducing carbon footprints.

**Energy Independence:** Solar power allows individuals and businesses to generate their own electricity, reducing dependence on traditional utility providers and increasing energy independence.

Solaris flexible solar power panels offer a sustainable and cost-effective solution for generating electricity from sunlight, contributing to a cleaner and more sustainable energy future.



Custom Awnings

[idtcustomawnings.com/padel-courts](http://idtcustomawnings.com/padel-courts)  
[sales@indemandtrading.co.za](mailto:sales@indemandtrading.co.za)  
t:// +27 (0)11 791 1888