



SOLARIS Architectural Solar

SOLARIS Architectural Solar



Page

1. About us.....	03-07
2. Processes.....	08-15
3. Flexible solar panels.....	16-17
3. Designs.....	18-41
4. Brandburn.....	42
8. Social Media.....	43

SOLARIS Architectural Solar

Our vision is to create innovative and architectural solar solutions. Using our 32 years experience in the tensile industry we believe we are well placed to realise our vision.

We have sourced a 3.5mm thick flexible solar panel that allows us the freedom to create architectural tensile solutions which provide not only solar power but also shade and a waterproof footprint where required.

ABOUT US



SOLARIS Architectural Solar

2022 by the numbers

30 years experience

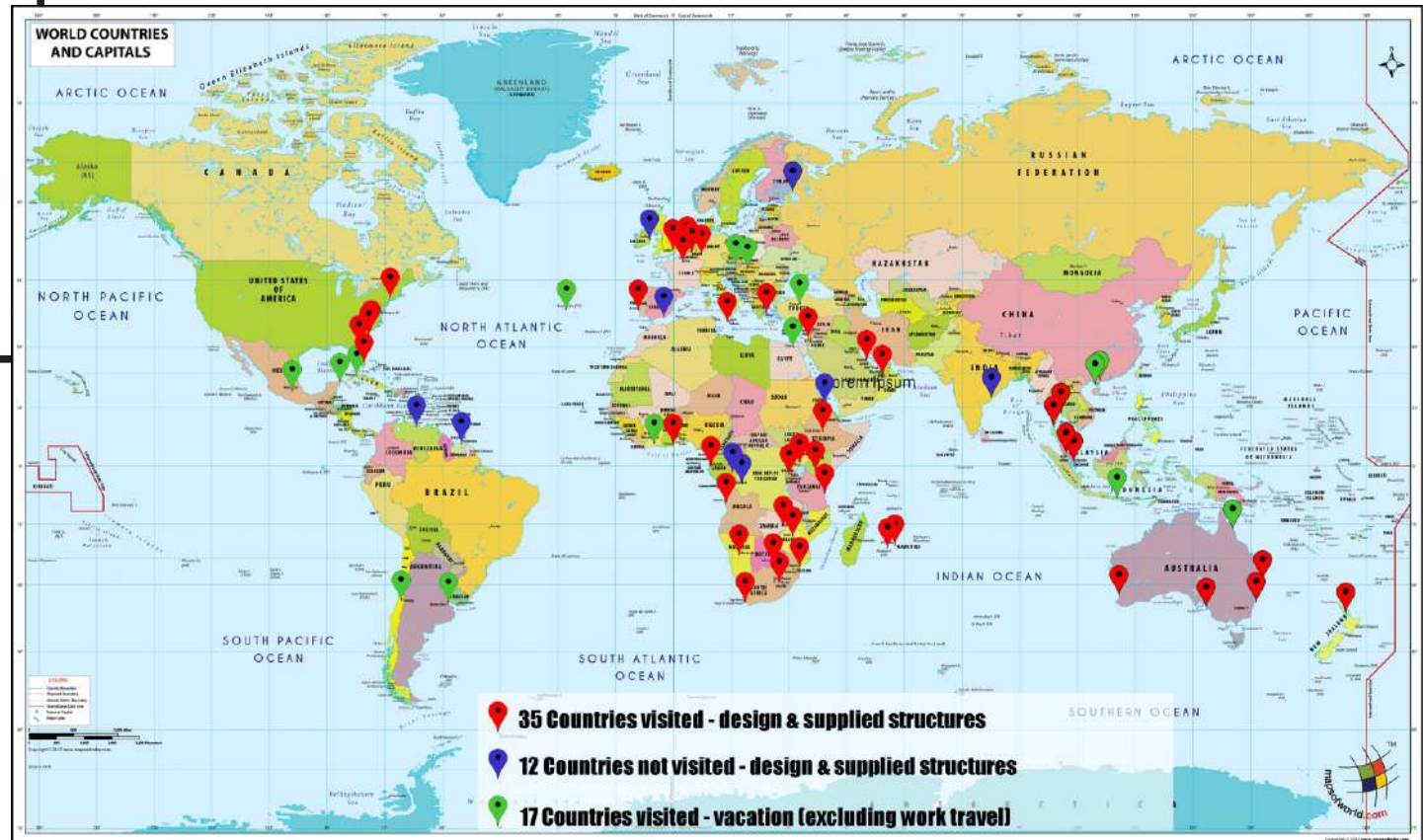
1 000's of projects

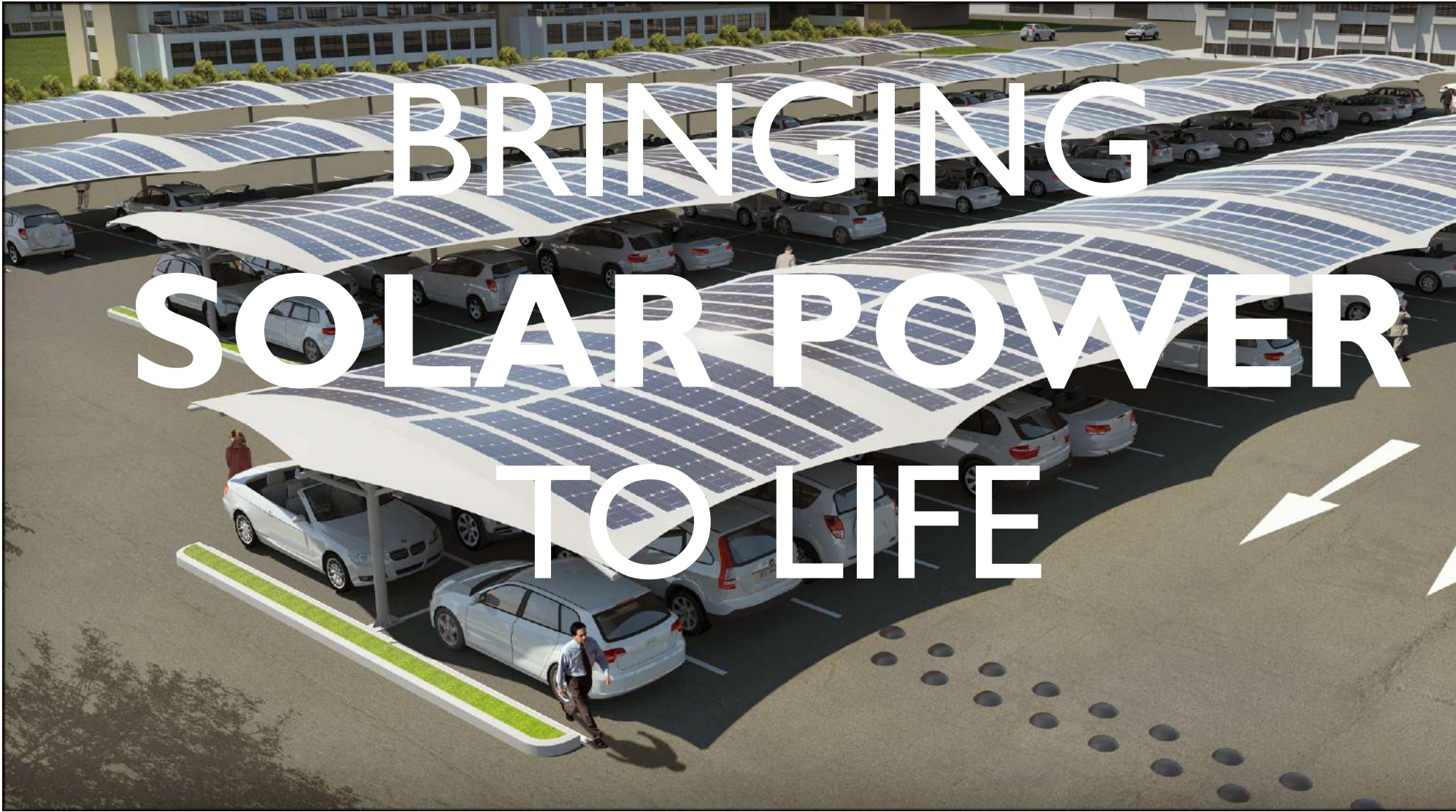
10 000's of structures

47 countries

88 standard designs

10 000's of engineering
& design hours





BRINGING
SOLAR POWER
TO LIFE



SOLARIS Architectural Solar



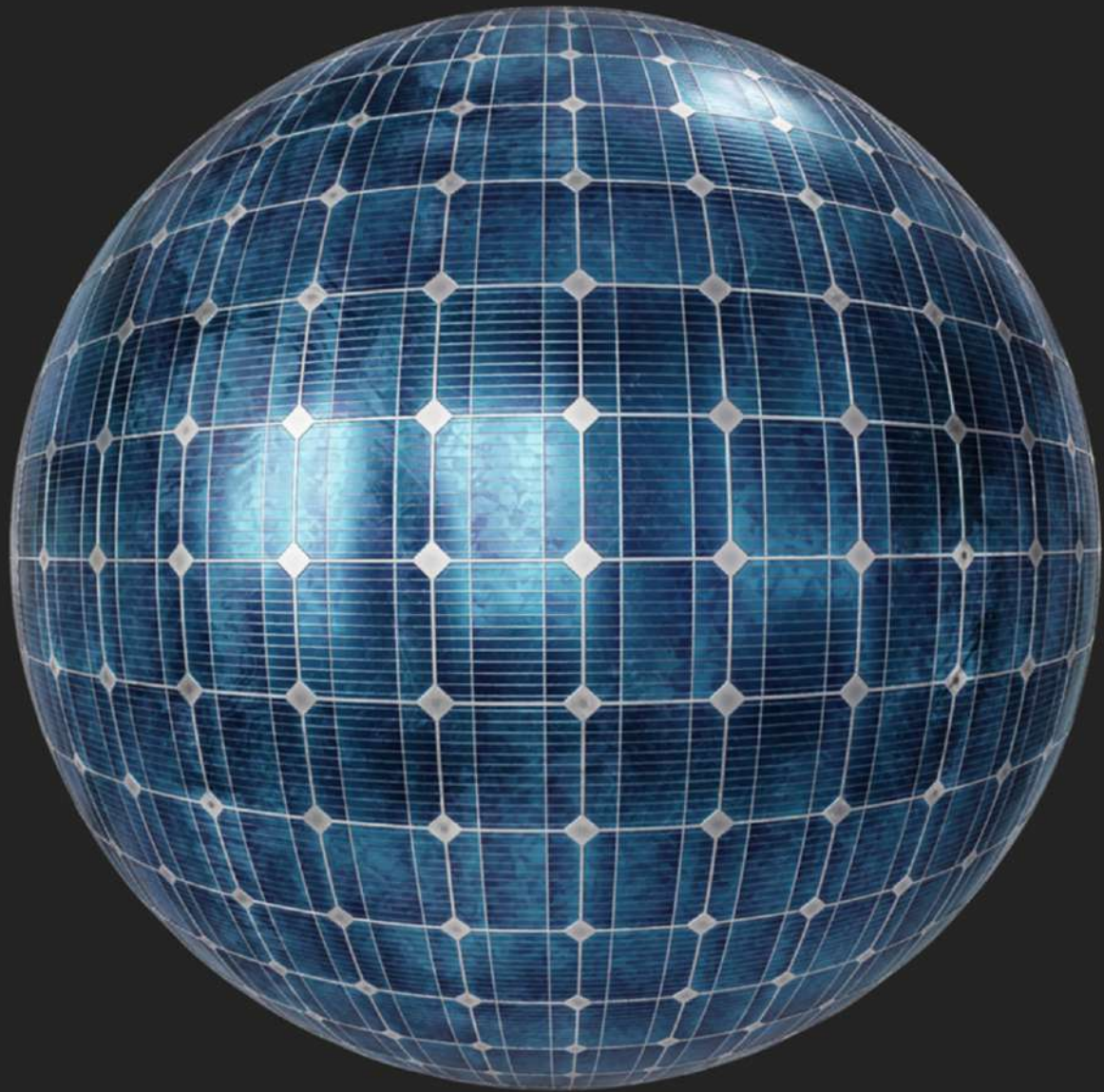
SOLARIS Architectural Solar

Solaris Architectural Solar has a large range of standard design tensile structures to suite most individual requirements in the commercial, hospitality and private sector.

Solaris Architectural Solar business partners have over the past 32 years developed a great deal of expertise in the design, manufacture & installation of custom and standard tensile structures

Our in-house project engineers have a wealth of experience in the design and development of custom designs for extreme high wind areas as well as the South African Standards. We use only the highest quality imported and locally produced fabrics.

Our structures are designed be innovative and organic in design and functionality.



FINDING YOU IN EVERY DETAIL

When deciding on the perfect design for your needs there are a number of criteria that need to be taken into account.

Amongst these is how much power we need to provide. What is the expected lifespan of the structure. Do you require the structure to provide shade, hail and or rain protection. What is the general layout of the area we have at our disposal.



Function of the structure to provide shade or rain protection. What weather conditions can we expect & what weather conditions need to be taken into account in the design.



Preferred design. There are many designs that we can offer in both standard and bespoke designs. We work with you to determine the best fit for your requirements.

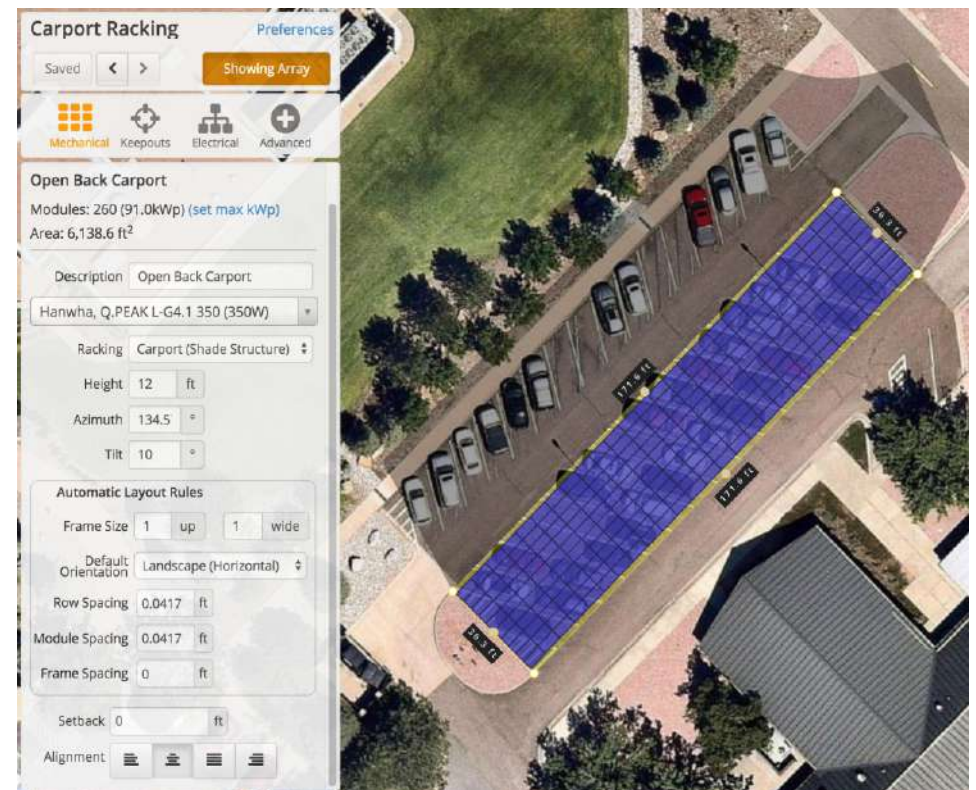


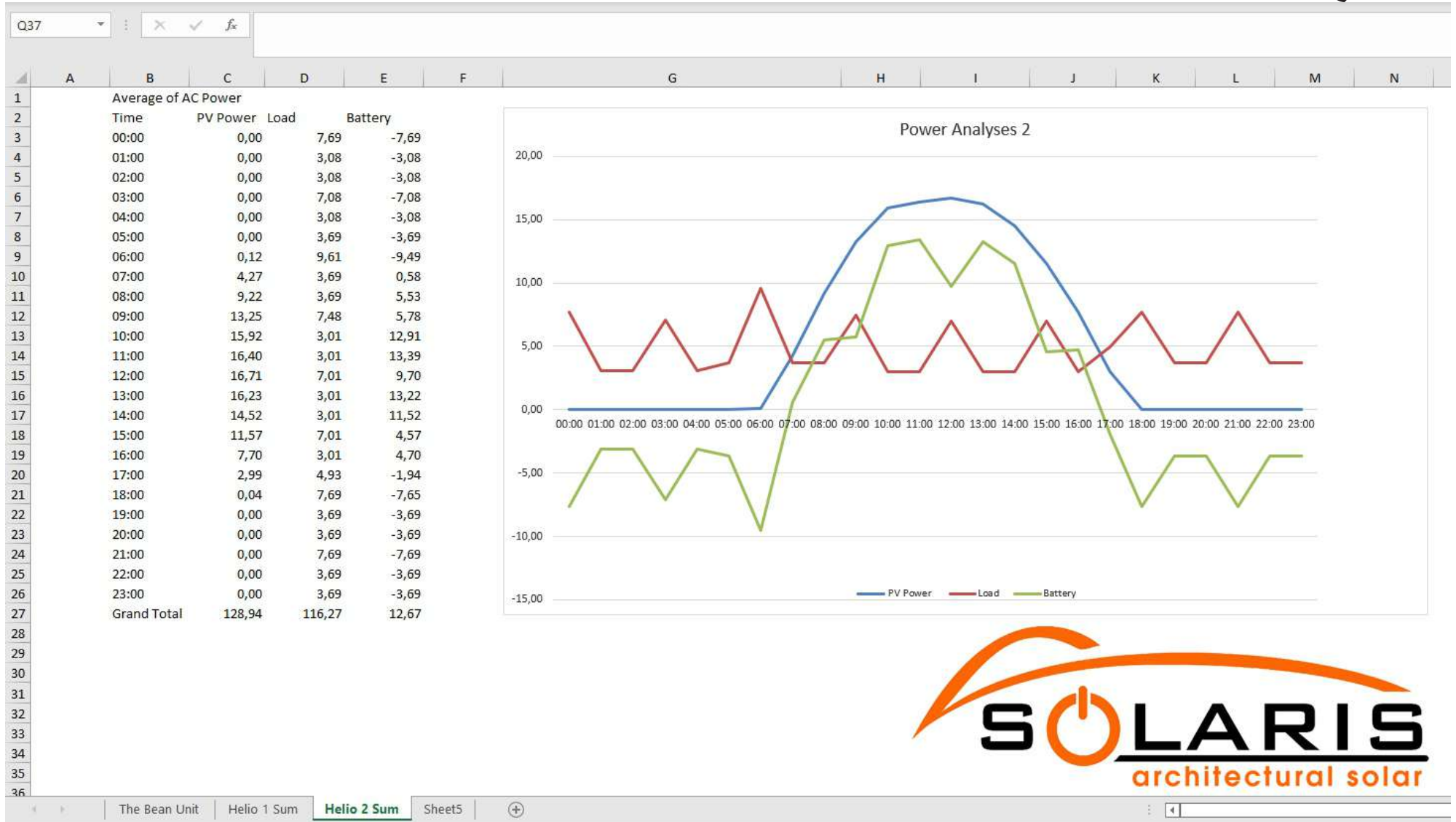
Do you require an engineer's sign off on the project or do you just require the structural analysis report that we routinely offer to our clients for each project we undertake.

SOLARIS Architectural Solar

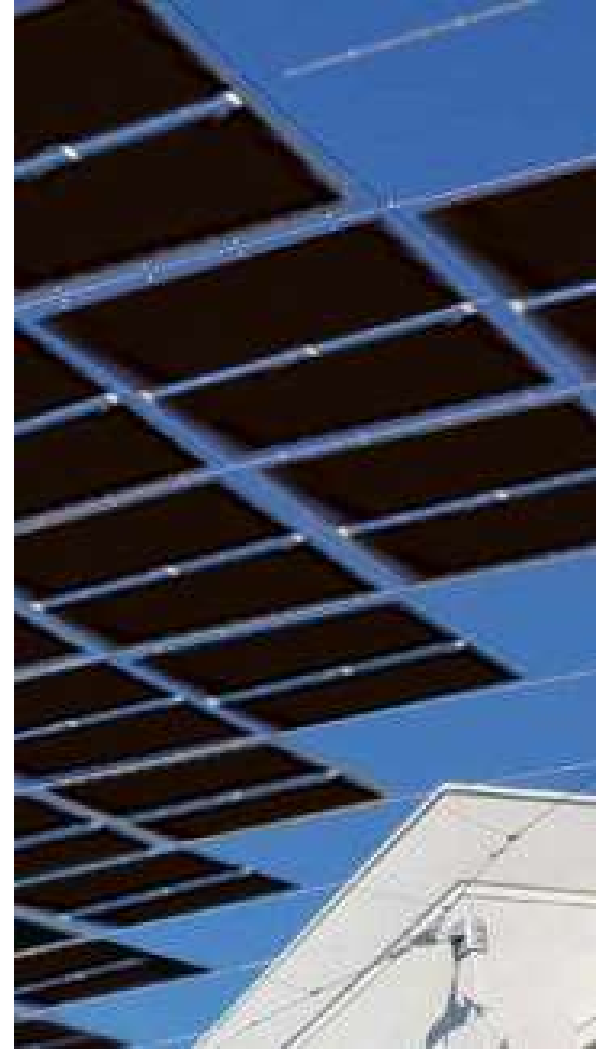
Helioscope

We use Helioscope a web-based sales and design tool for solar professionals with the power to completely reshape the proposal generation process. From its robust 3D design engine and bankable energy yield simulator to its detailed financial calculator and drag-and-drop proposal editor.

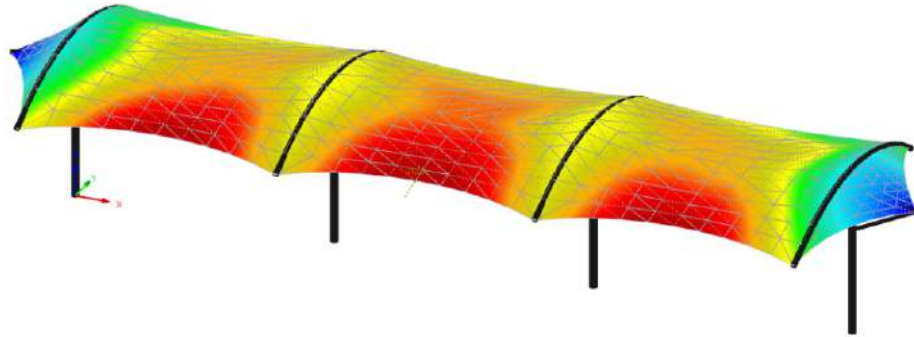




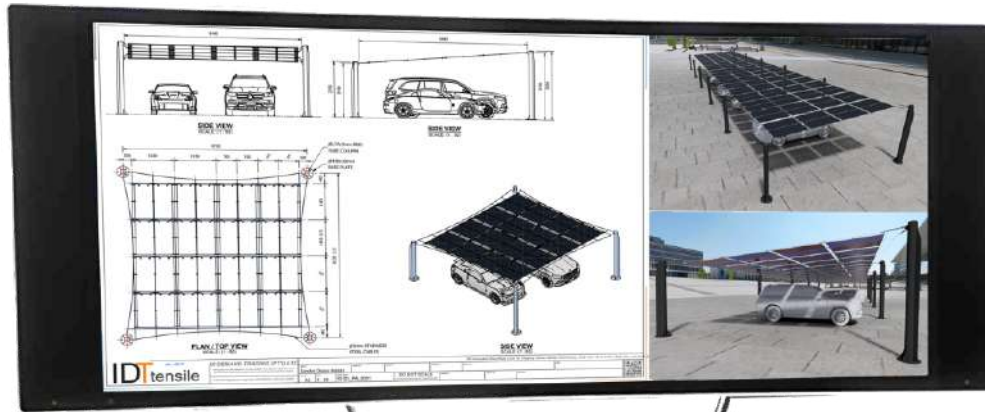
SOLARIS Architectural Solar



SOLARIS Architectural Solar



INSIST ON A STRUCTURAL ANALYSIS



LET US DESIGN YOU NEXT.



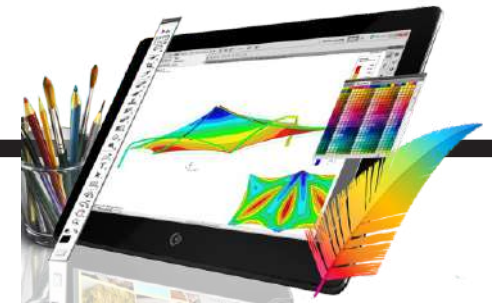
MEMBRANE

DESIGN



In general the design process takes about 7 working days. This includes the layout drawings, renders and membrane patterns.

ANALYSIS



Structural analysis is conducted by country and by region in accordance with the required wind load codes of the region. This process can take up to a week depending on the complexity of the design.

SOLARIS Architectural Solar

FABRICATION

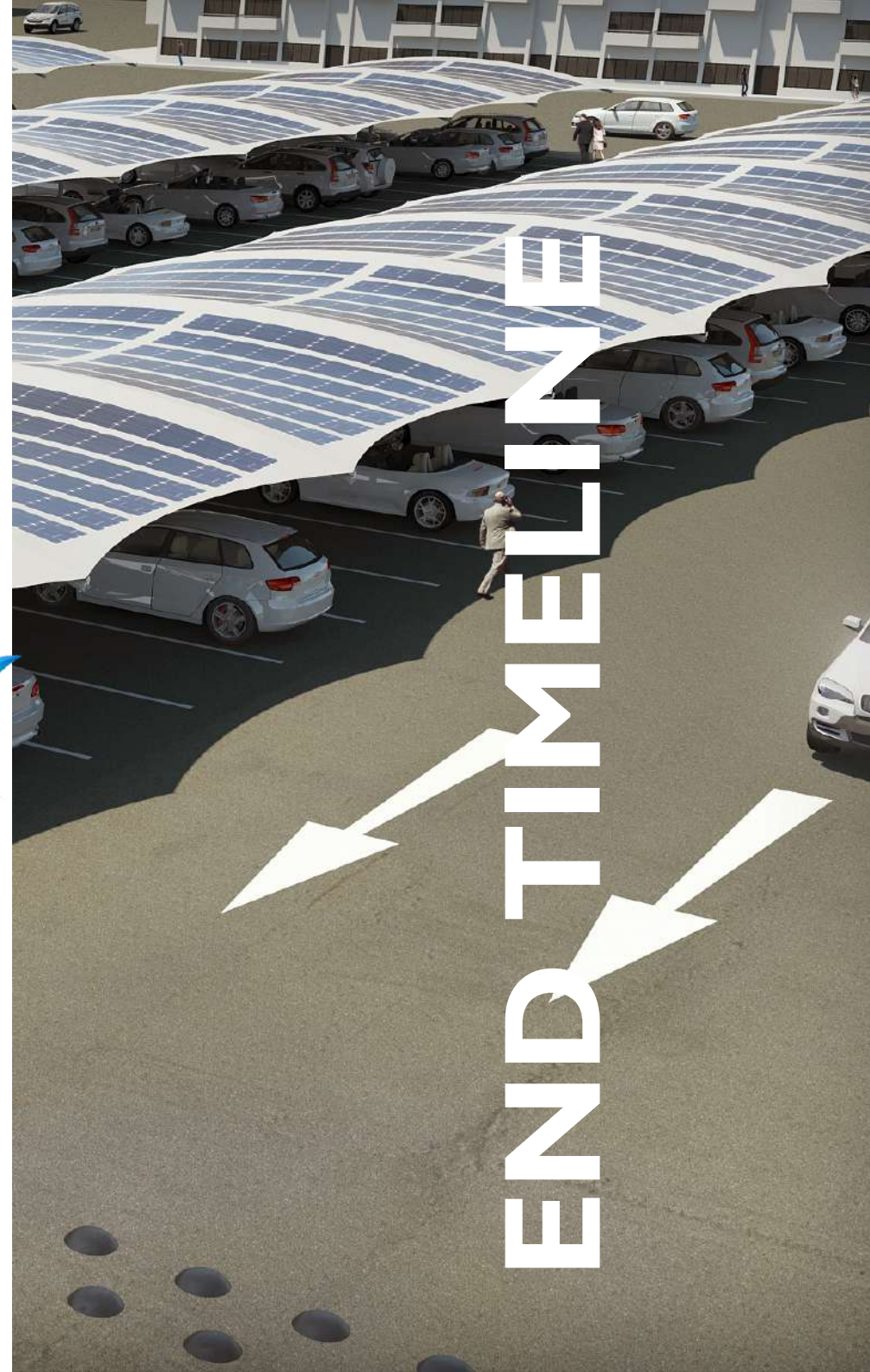


Fabrication process takes about 4-6 weeks. This will include the costing, procurement, receipt of materials, fabrication & coating.

INSTALLATION



The time on site is totally dependant on the complexity of the structure. Site visits are normally broken up into foundations and the installation of the actual structure.



SOLARIS Architectural Solar

3D

1 The Solaris Architectural Solar panels can be curved into 3D shapes.

2 Designs

We offer our Solaris Architectural Solar solutions in standard designs as well as architectural custom designs.

3 Accreditations

Electrical Contractor in terms of regulation 6(4) of the Electrical Installation Regulations
PQRS Accredited Solar PV Training
ECB Listed Contractor



SOLARIS Architectural Solar

Flexible Solar Panels

Weight - Panels weigh 2.9kgs per sqm (less than 30% of traditional glass panels)

Thickness - Thickness 1.8mm

Flexible - Smallest bending radius of 0.3m, no cell cracks, no power loss

Hail - Can ensure hail strikes without cell cracks or power loss

Easy-to-install - No need for PV support bracket, modules can be directly bonded to installation surface by weather-resistant glue

Aesthetics - Module's surface and texture can be customized to meet aesthetic requirements

Glare Intensity is Less Than 10% of Traditional Glass Modules

Super Strong Resistance to Cell Cracks After Sharp Bending

Quality Assurance - TUV Nord Cert GmbH



产品质保



峰值功率质保



SOLARIS Architectural Solar

Tier one panel



PRODUCT SPECIFICATION



Module type

			000A-460	000A-465	000A-470	000A-475	000A-480
Peak-power	PMPP	[W]	460	465	470	475	480
Power-tolerance	0~+3%	[W]	0~5W	0~5W	0~5W	0~5W	0~5W
Peak-voltage	VMPP	[V]	38.24	38.37	38.5	38.63	38.76
Peak-current	IMPP	[A]	12.02	12.11	12.2	12.29	12.38
Peak-current voltage	Voc	[V]	45.4	45.53	45.66	45.79	45.82
Short-circuit current	Isc	[A]	12.54	12.62	12.7	12.78	12.86
Fuse-current		[A]	20				
Maximum-system voltage	IEC/UL	[V]	1000/1500V DC (IEC)				

Size 2250*1130mm (+2/-2)

Front-plate material	Fluorine membrane front plate	Junction-box	Triad Junction box IP68
Jointing-material	POE polyolef	Output-terminal	MC4
Backboard-material	Reinforcement materials	Cell	Monocrystal PERC
thickness	1.8 mm	Quality-assurance	10 years warranty 25 years power warranty
weight	7.62 kg	Panel-certification	IEC 61646, IEC 61730
Single-area weight	3.0 kg/m ²		

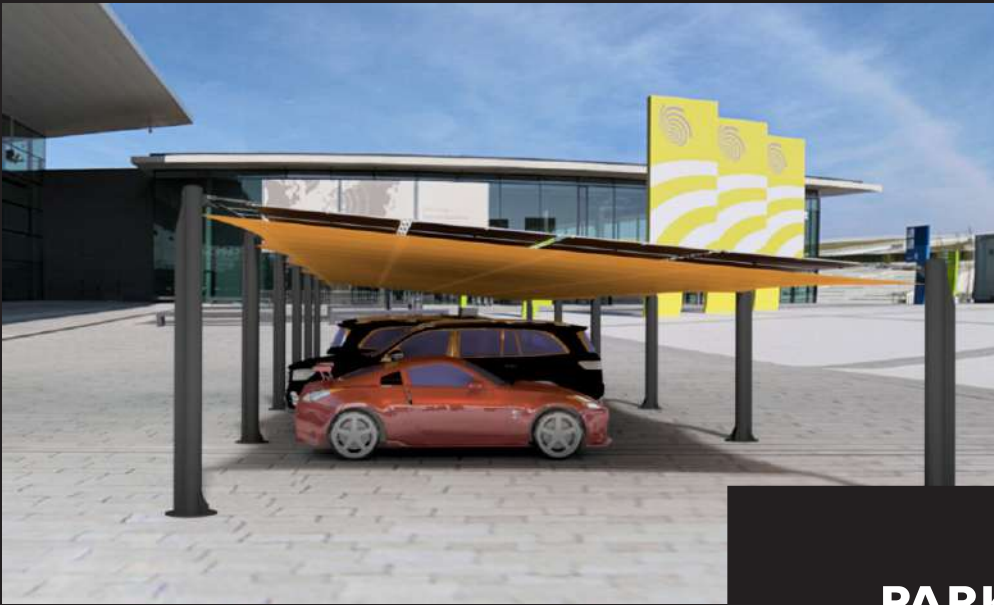
NOCT	[°C]	45+2°C
Temperature-coefficient of PMPP	[%/°C]	-0.37
Temperature-coefficient of Voc	[%/°C]	-0.28
Temperature-coefficient of Isc	[%/°C]	0.05



Can endure hail strikes without cell cracks and power loss

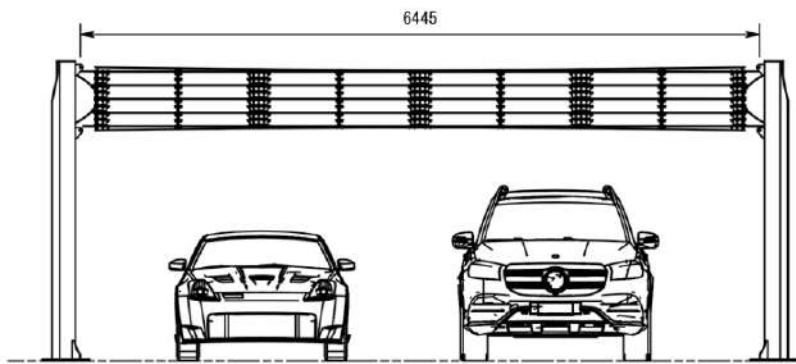
SOLARIS Architectural Solar

DESIGNS

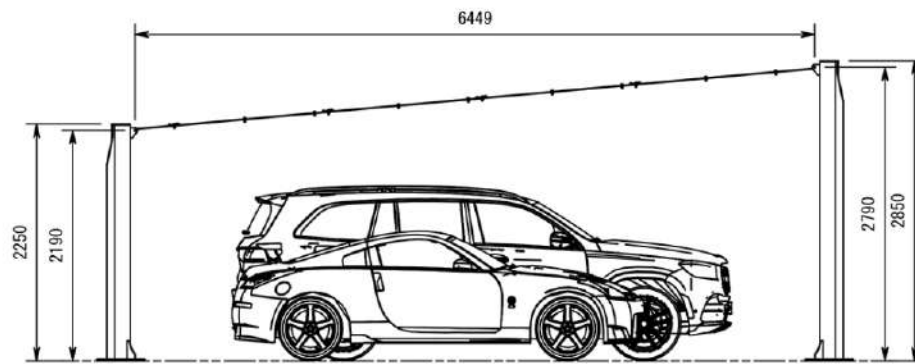


**PARKING
AREAS**

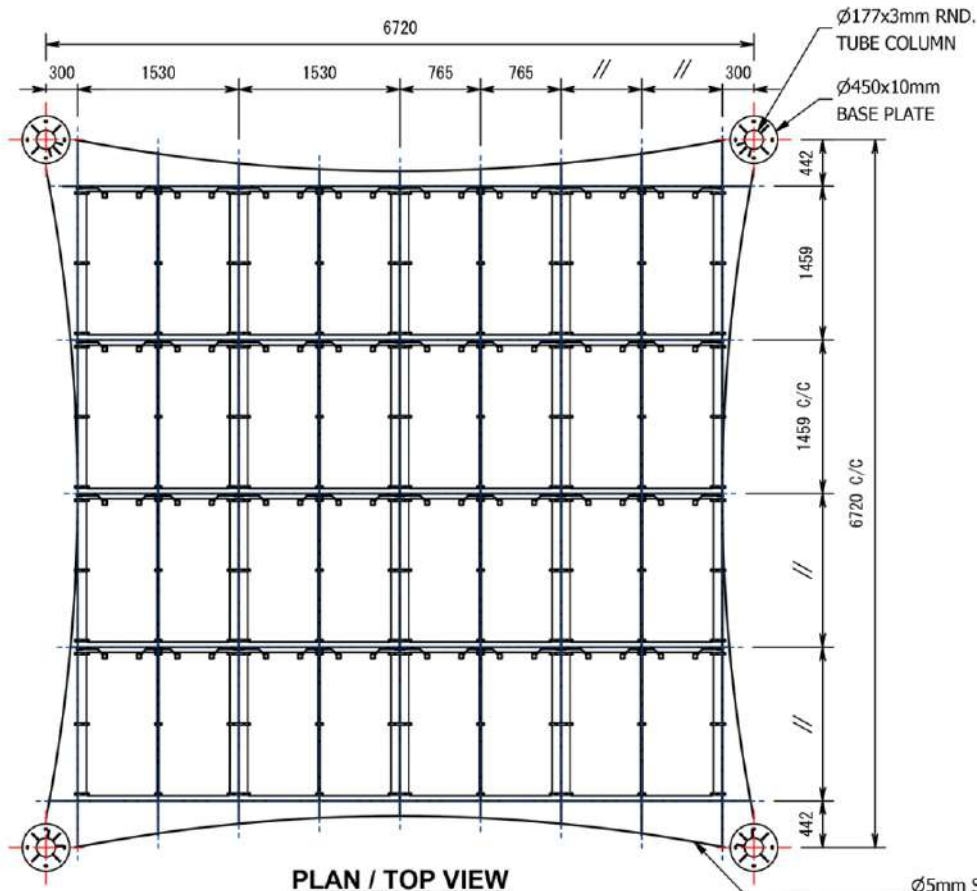




SIDE VIEW
SCALE: (1 : 50)

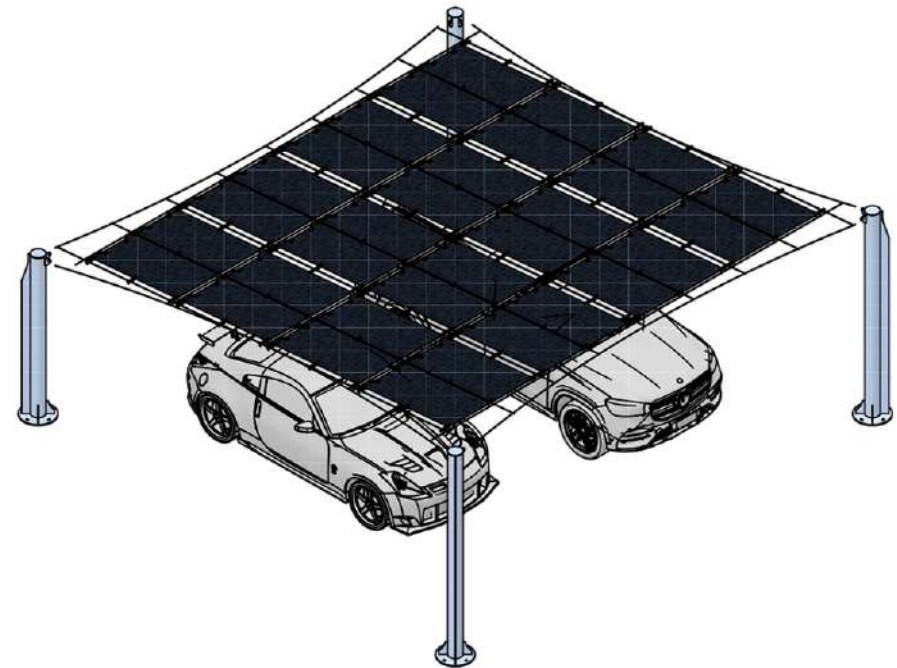


SIDE VIEW
SCALE: (1 : 50)



PLAN / TOP VIEW
SCALE: (1 : 50)

Ø5mm STAINLESS
STEEL CABLES



SIDE VIEW
SCALE: (1 : 60)

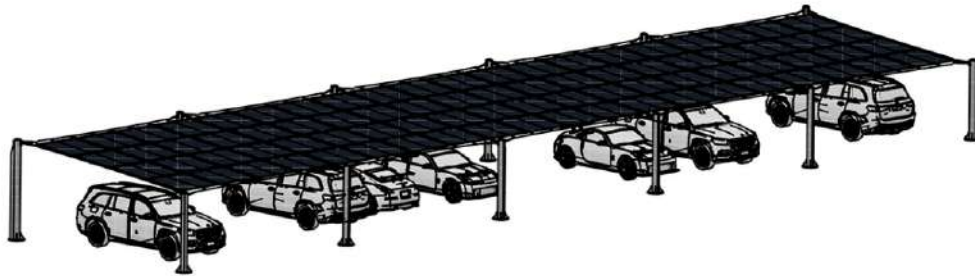


SOLARIS Architectural Solar



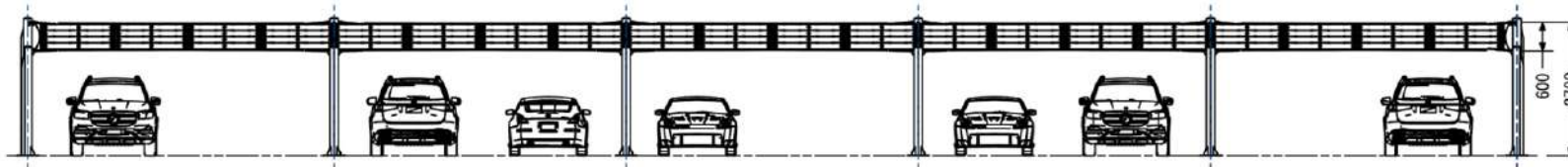
SOLARISPORT SA



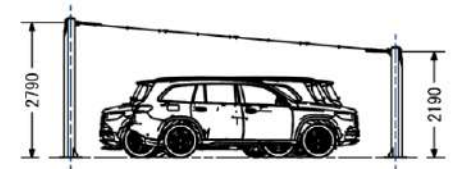


SIDE VIEW
SCALE: (1 : 150)

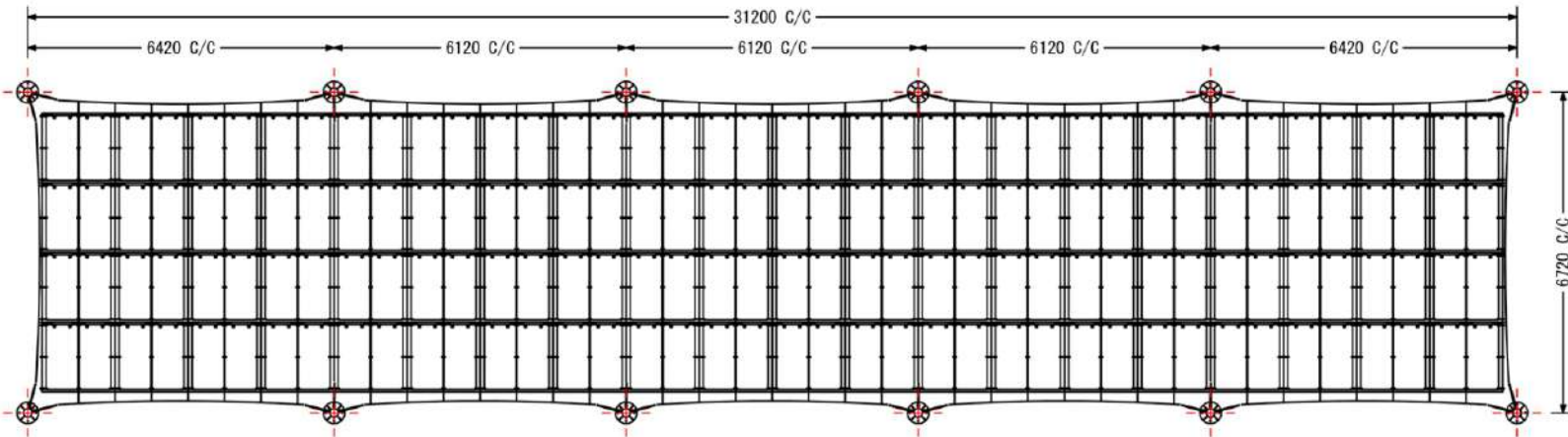
Max Rated Power: **25.6 Kilowatts**
 Tolerance: **+/- 3%**
 Normal Operating Cell Temp: **47°C | +/- 2°C**
 Operating Temperature: **-40°C to 85°C**
 Application Class: **Class A**



SIDE VIEW
SCALE: (1 : 110)



SIDE VIEW
SCALE: (1 : 110)



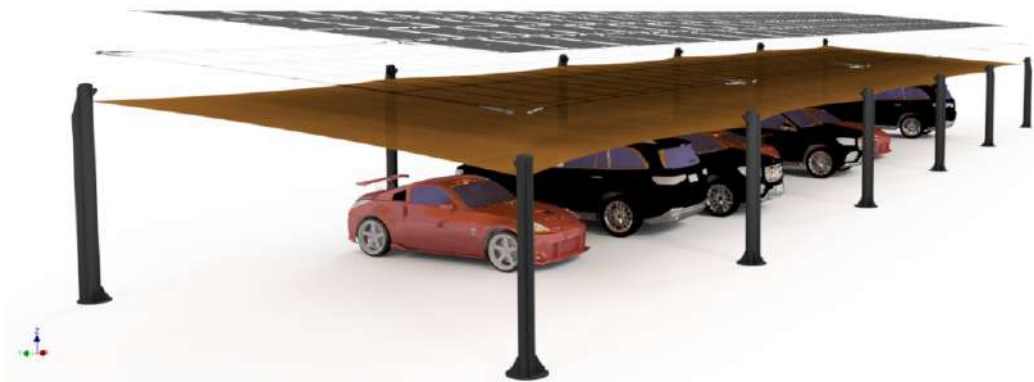
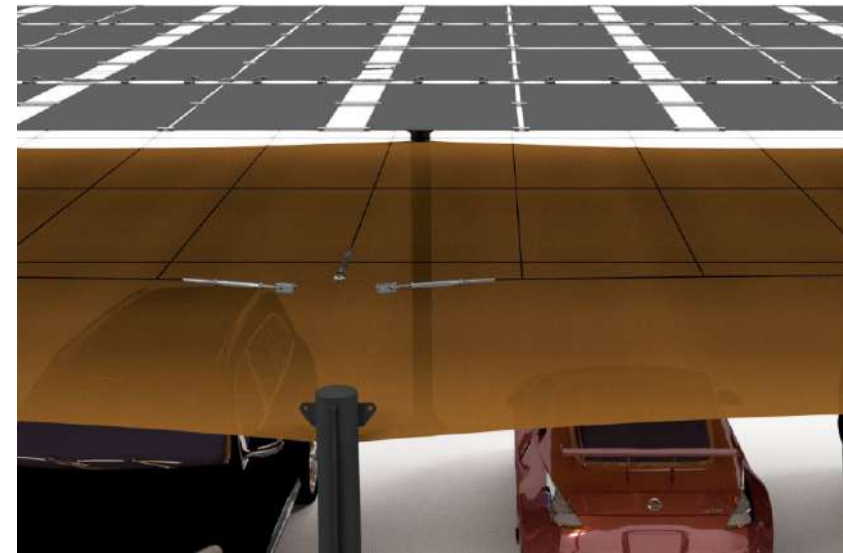
PLAN / TOP VIEW
SCALE: (1 : 110)

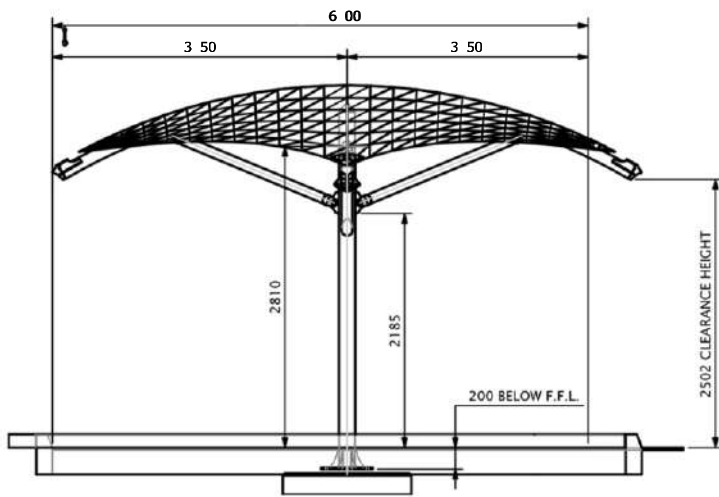


SOLARIS Architectural Solar

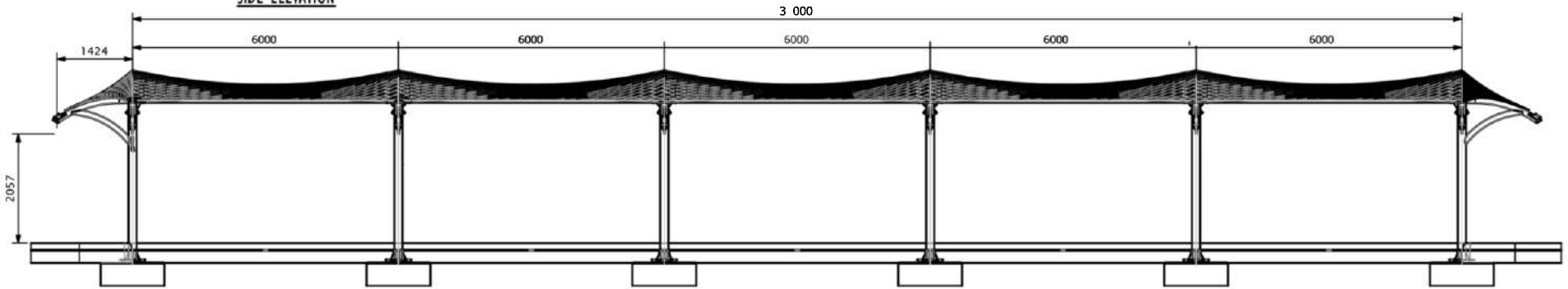


SOLARISPORT MU

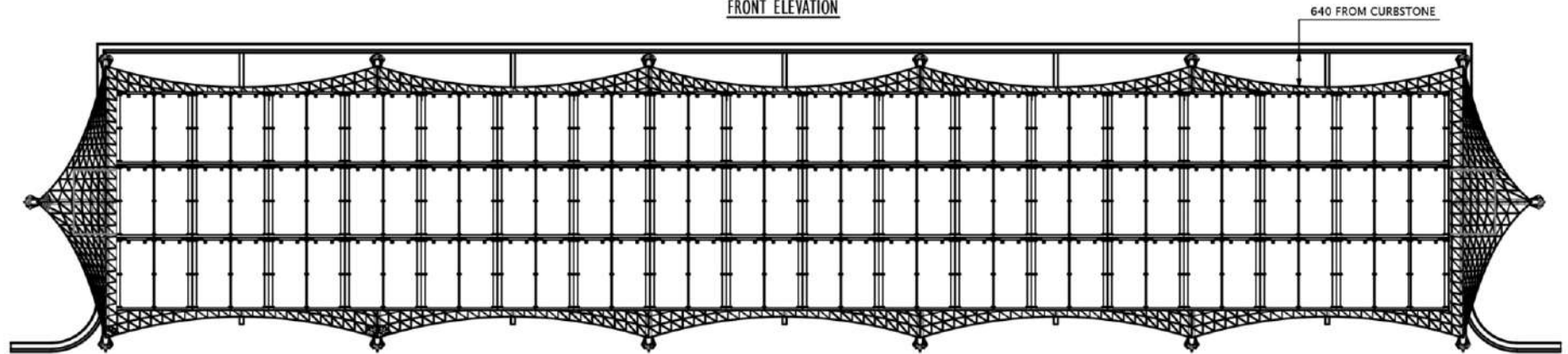




SIDE ELEVATION



FRONT ELEVATION



PLAN VIEW



innovative solar products hospitality
hotels coffee shops restaurants

Max Rated Power: 166 Kilowatts/sqm
 Tolerance: +/- 3%
 Normal Operating Cell Temp: 47°C | +/- 2°C
 Operating Temperature: -40°C to 85°C
 Application Class: Class A

DESIGNED BY Sandor Dezso Balazs	DRAWN BY	CHECKED BY	ISSUED BY	PROJECT NO.	DATE
SHEET NO. A3	SCALE 1 : 110	CLIENT REFERENCE Solar Carport Row_PA_000	DO NOT SCALE ANYTHING IS UNCLEAR, GET CLARIFICATIONS	APPROVED BY	APPROVED DATE

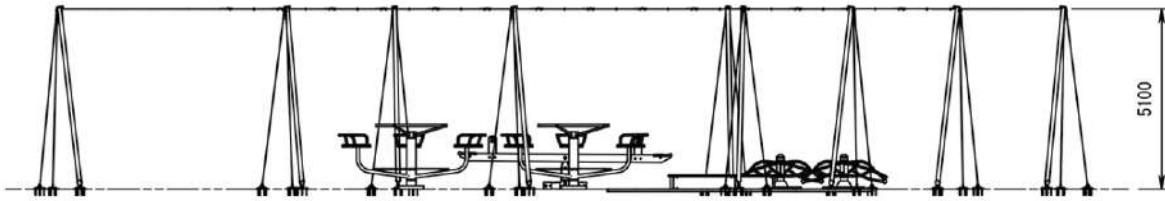


SOLARIS Architectural Solar

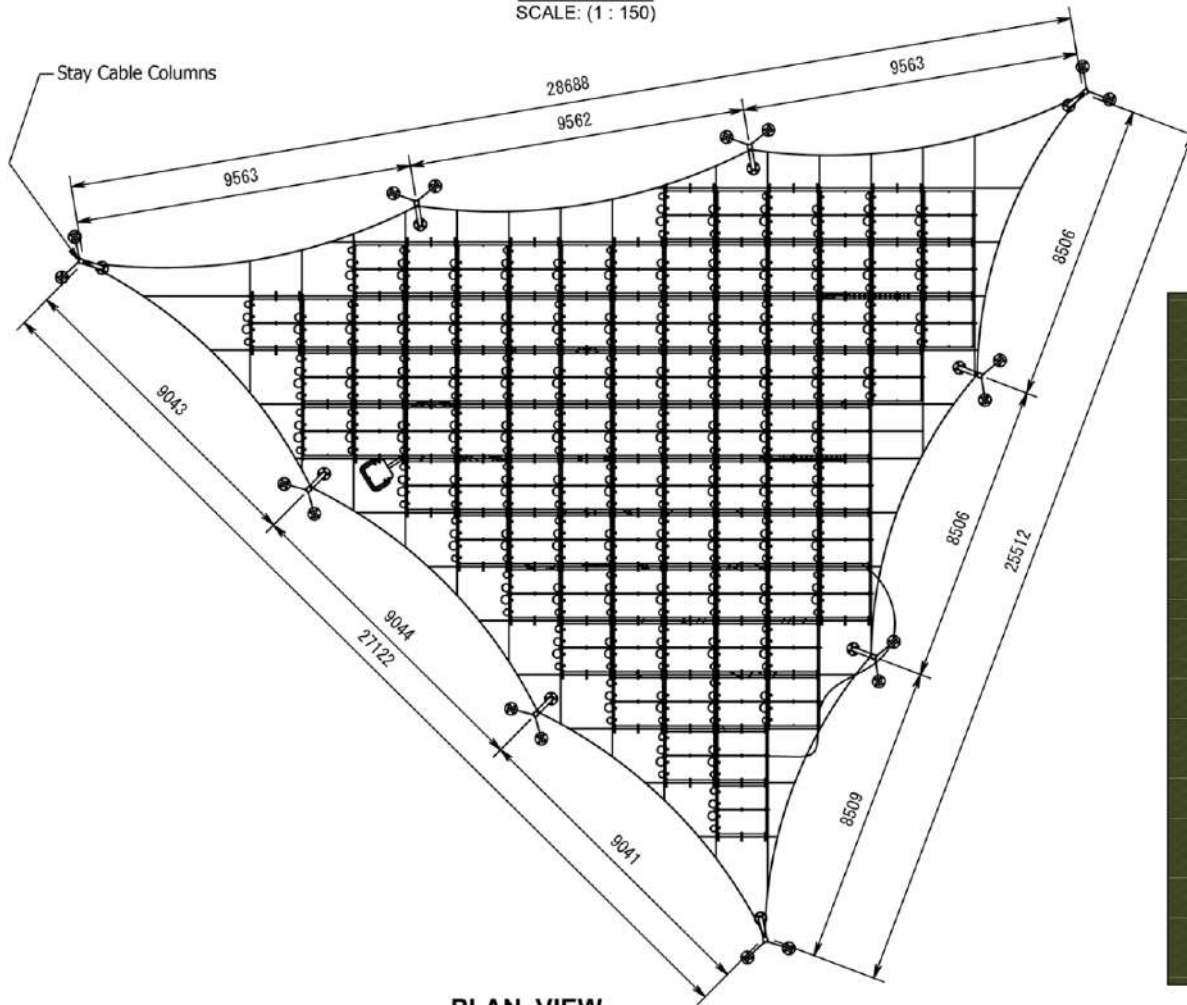


SOLARIS BARRELPOR T MU





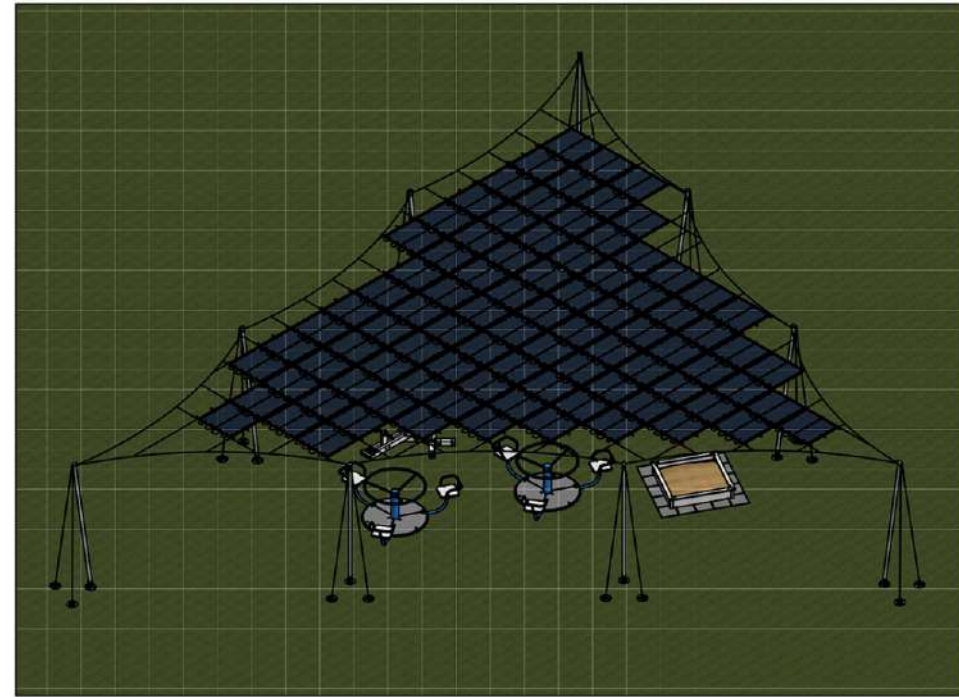
SIDE VIEW
SCALE: (1 : 150)



PLAN VIEW
SCALE: (1 : 150)



Rated Max Power: **30.7 Kilowatts**
 Tolerance: **+/- 3%**
 Normal Operating Cell Temp: **47°C | +/- 2'**
 Operating Temperature: **-40°C to +85°C**
 Application Class: **Class A**



SIDE VIEW
SCALE: (1 : 175)

SOLARIS Architectural Solar

FREE STANDING

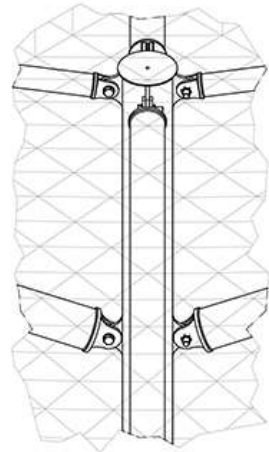


PARTS LIST						
ITEM	ITEM QTY	BASE QTY	PART NUMBER	DESCRIPTION	MATERIAL	MASS
1	2	1	10226-WA-0002	Long Arm 01 Assembly	Weld - Mild Steel	50,40 kg
2	2	1	10226-WA-0004	Long Arm 02 Assembly	Weld - Mild Steel	75,07 kg
3	2	1	10226-WA-0003	Strut Arm 01 Assembly	Weld - Mild Steel	25,54 kg
4	2	1	10226-WA-0005	Strut Arm 02 Assembly	Weld - Mild Steel	28,81 kg
5	1	1	10226-MA-0001	Membrane 01 Assembly		0,874 kg
6	2	1	10226-WA-0001	Column 01 Assembly	Weld - Mild Steel	158,09 kg
7	24	1	10226-DIN-125A-0001	M20 Flat Washer	Steel - Mild	0,02 kg
8	12	1	10226-DIN-934-0001	M20x2.5 Hex Nuts	Steel - Mild	0,07 kg
9	12	1	10226-DIN-933-0001	M20x20 Hex Head Screw (Partially Threaded)	Steel - Mild	0,28 kg
10	1	1	10226-CB-0001	1250x1250x1400 Concrete Base	Concrete - C30 / C37	5263,61 kg

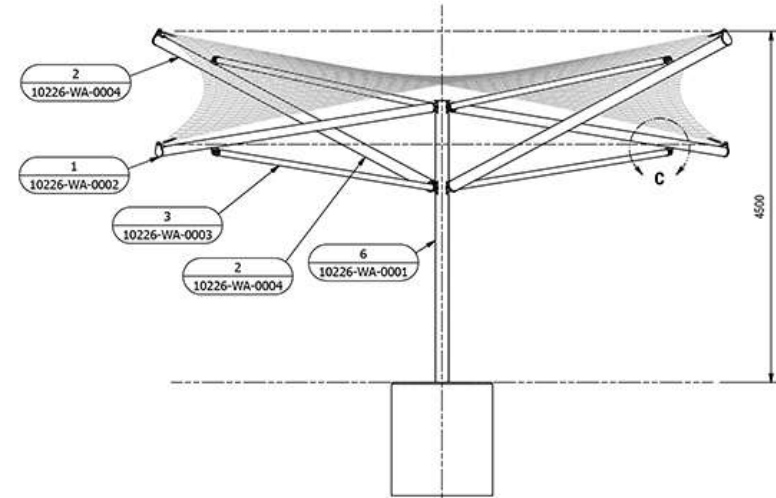
GENERAL NOTES:
 - ALL DIMENSIONS ARE IN MILLIMETERS UNLESS NOTED OTHERWISE.
 - DRAWINGS ARE NOT TO BE SCALED UNLESS SPECIFIC DIRECTIONS ARE SUPPLIED.
 - SETTING OUT T, B, C & AGREED ON SITE.
 - U.N.O DENOTES UNLESS NOTED OTHERWISE.

FABRICATION NOTES:
 - ALL WELDS TO BE SMM FILLET WELD U.N.O.
 - ALL STEEL TO BE IN ACCORDANCE WITH SANS 20025.
 - ALL STEEL TO BE FREE FROM BURS & SHARP EDGES.

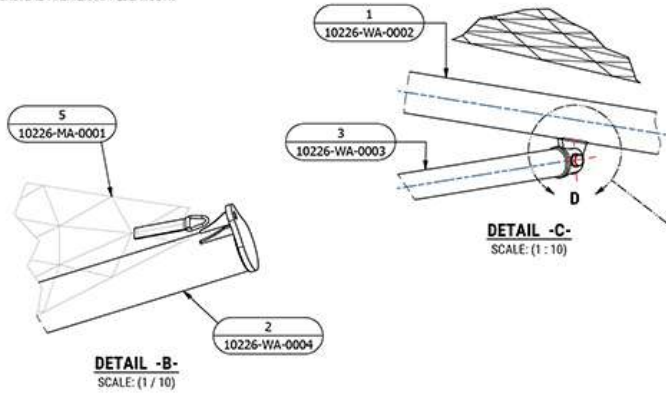
COATING NOTES:
 - STEEL TO BE FREE FROM CORROSION & DEGREASED PRIOR TO INITIAL PRIMER APPLICATION.



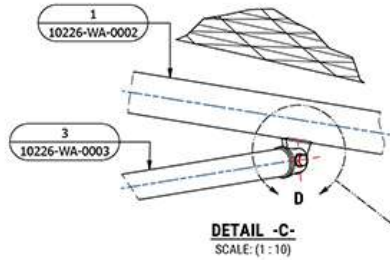
DETAIL - A-
SCALE: (1 / 12)



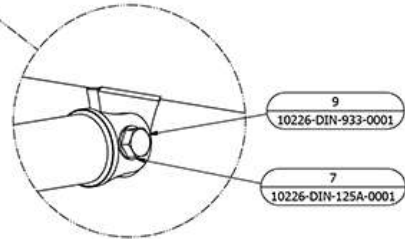
FRONT VIEW
SCALE: (1 : 45)



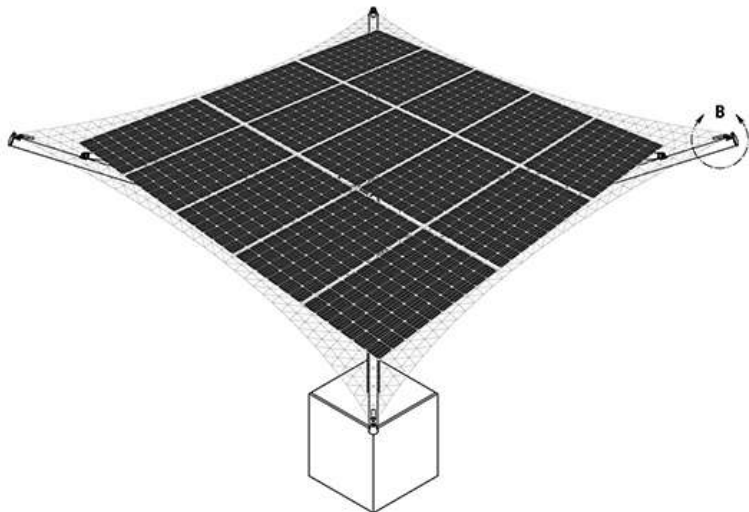
DETAIL - B-
SCALE: (1 / 10)



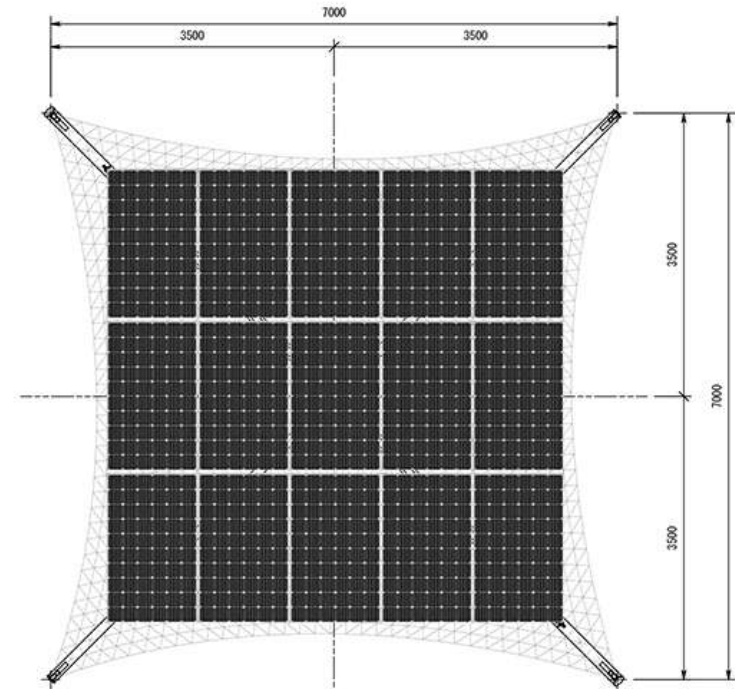
DETAIL - C-
SCALE: (1 : 10)



DETAIL - D-
SCALE: (1 / 4)



ISOMETRIC VIEW
SCALE: (1 : 50)



PLAN / TOP VIEW
SCALE: (1 : 45)



SOLARIS Architectural Solar

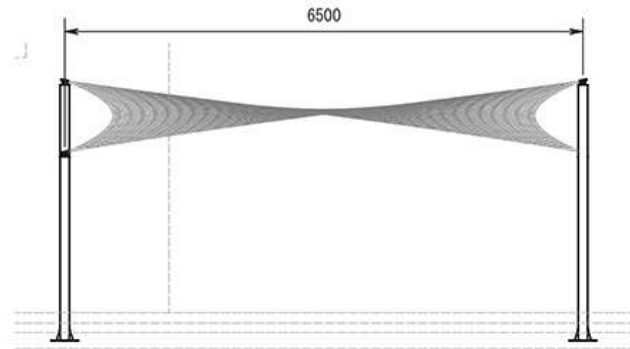


Centre Post Hypar

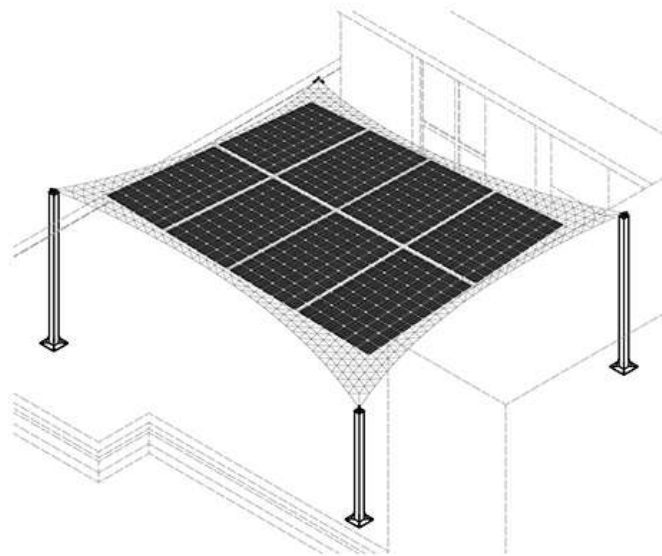


PARTS LIST						
ITEM	ITEM QTY	BASE QTY	PART NUMBER	DESCRIPTION	MATERIAL	MASS
1	1	1	10054-GRID-0001		Generic	0.00 kg
2	2	1	10054-WA-0001	Membrane 01 Assembly		8.229 kg
3	2	1	10054-WA-0002	Membrane 01 Assembly		6.583 kg
4	1	1	10054-MA-0001	Membrane 01 Assembly		0.000 kg

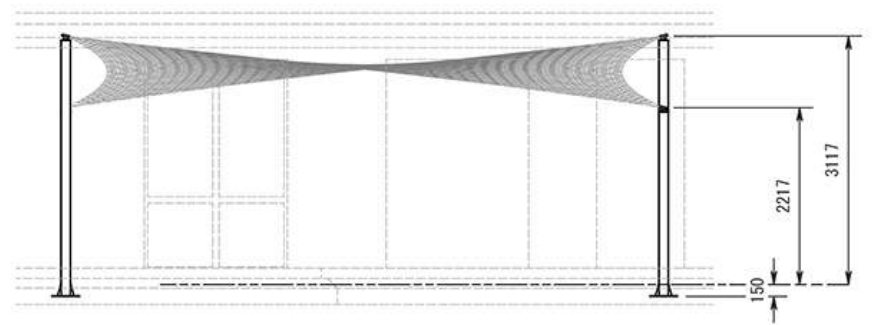
AREA **11541406.695 mm²** MASS **29.624 kg** DENSITY **1.148 g/cm³** VOLUME **25808984.370 mm³**



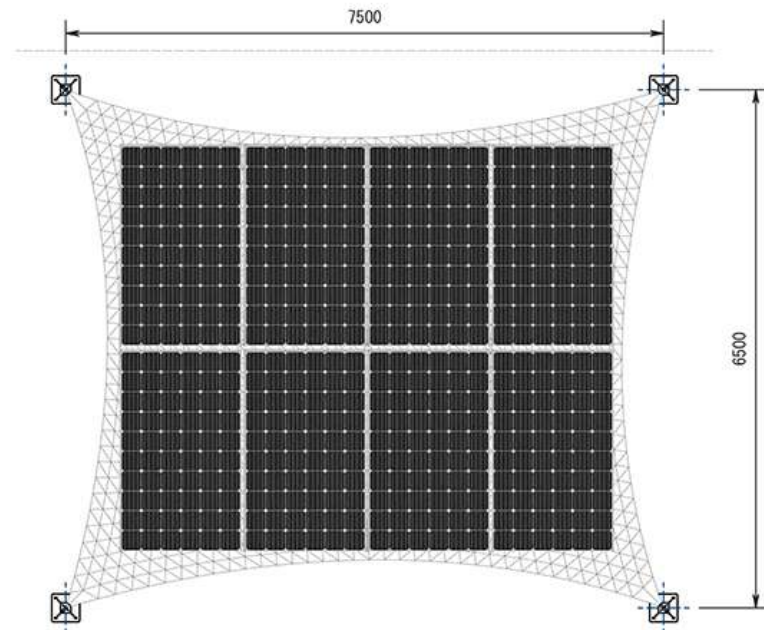
VIEW A-A
SCALE: (1 : 65)



A →



SIDE VIEW2
SCALE: (1 : 65)



PLAN / TOP VIEW
SCALE: (1 : 65)



IN DEMAND TRADING (PTY) LTD

THE CONTENT OF THIS DRAWING IS THE SOLE PROPERTY OF IN DEMAND TRADING (PTY) LTD. IT MAY NOT BE COPIED OR ENLARGED TO ANY THIRD PARTY WITHOUT WRITTEN CONSENT.

In Demand Trading (Pty) Ltd | Reg Number: 2014/051551/07 | VAT Number: 4582746

SCALE **1 : 65**
SIZE **A3**
REV
SHT # **1**

PROJECT **10054 - Nedbank Headoffice Courtyard**
DESCRIPTION **Membrane 01 Assembly**
SUBJECT



COMPONENT # **10054-PA-0001**
DRAWN BY **Paul Jacobs**
CHECKED BY
APPROVED BY

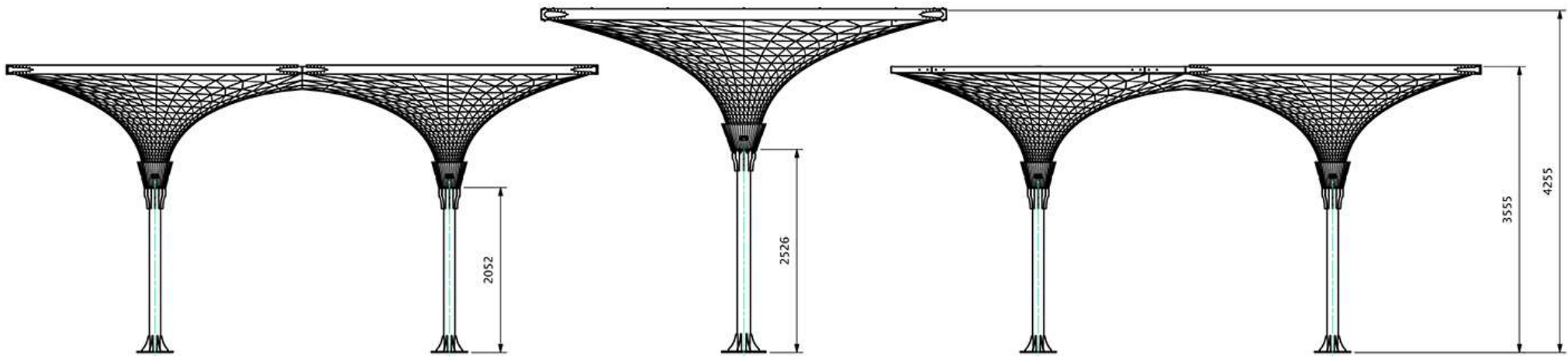
DATE
DATE
DATE

SOLARIS Architectural Solar

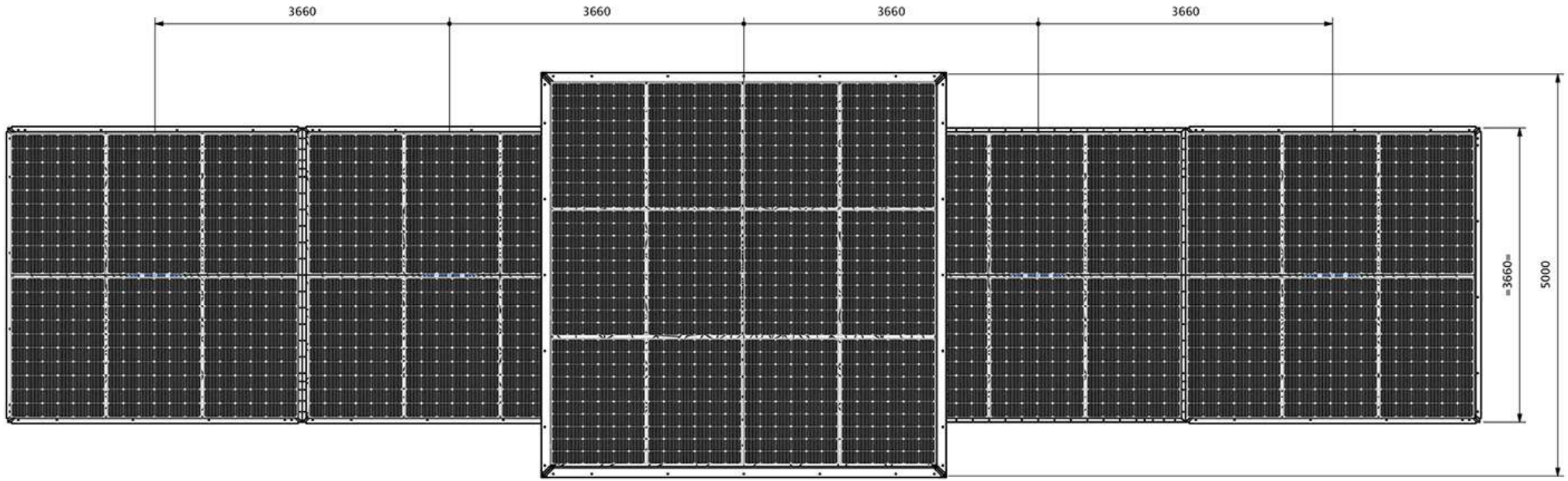


Tensile Sail





FRONT ELEVATION



PLAN VIEW

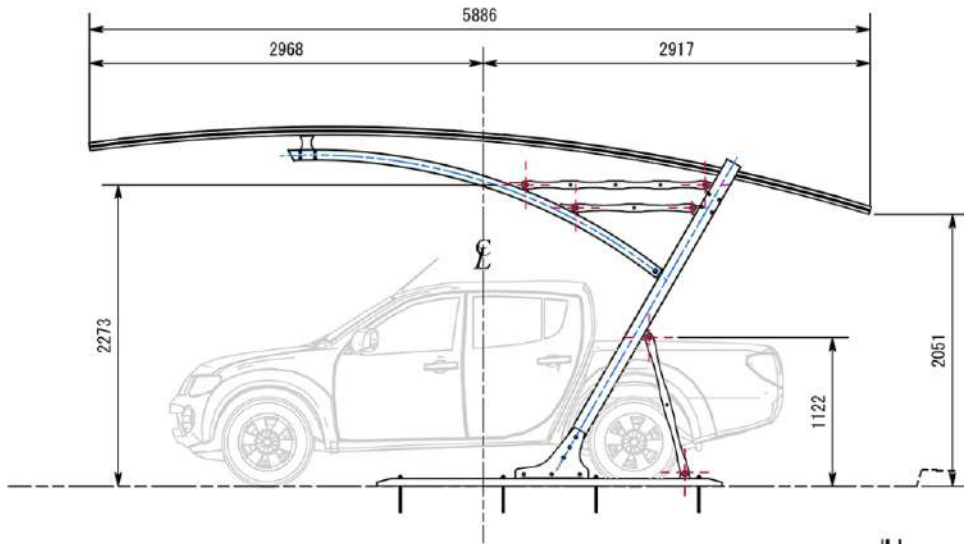
CLIENT NAME:		DRAWING DATE:	
DRAWN BY: Paul Jacobs		DRAWN DATE: 1/5/2016	
CHECKED BY: Marc Du Plessis		CHECKED DATE:	
ISSUED FOR:		CONSTRUCTION	
SHEET SIZE: A3		DRAWING NUMBER: -SA--	
REV: A		SCALE: 1:50	
DIMENSIONS SHALL NOT BE OBTAINED BY MEANS OF SCALING OF THE DRAWING.		SHEET 1 OF 1	



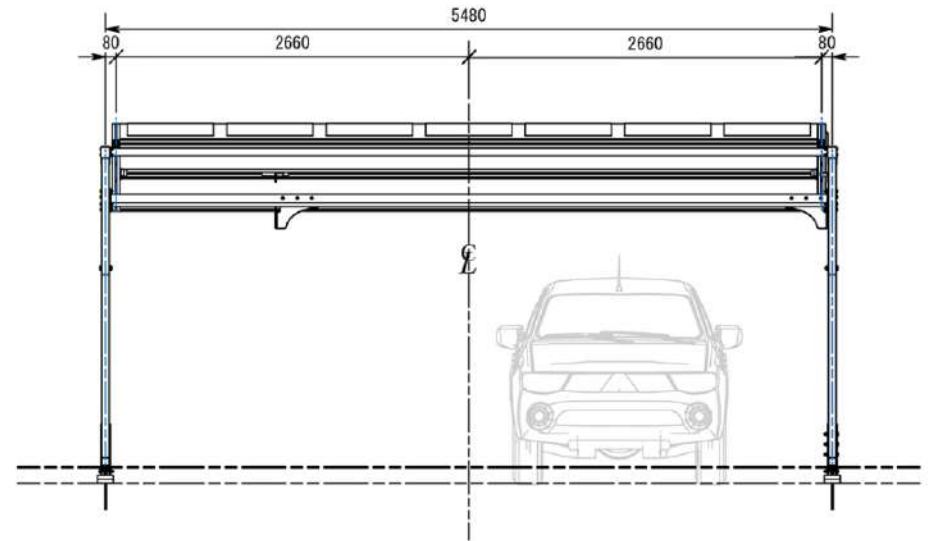
SOLARIS Architectural Solar

Charging Stations

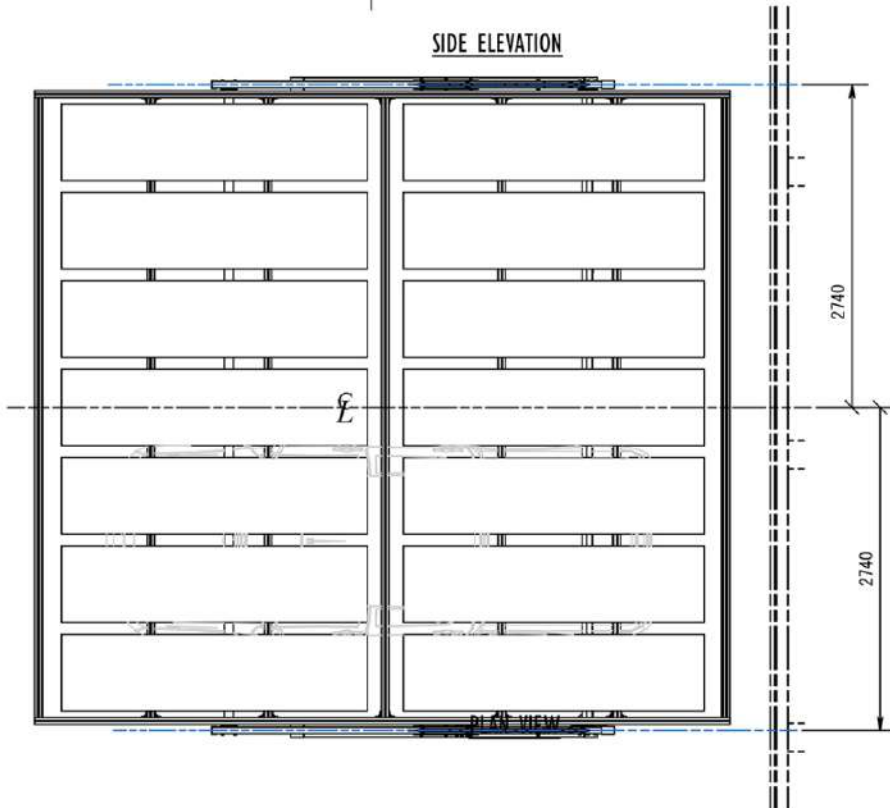




SIDE ELEVATION



FRONT ELEVATION



PLAN VIEW



ISOMETRIC VIEW



SOLARIS Architectural Solar

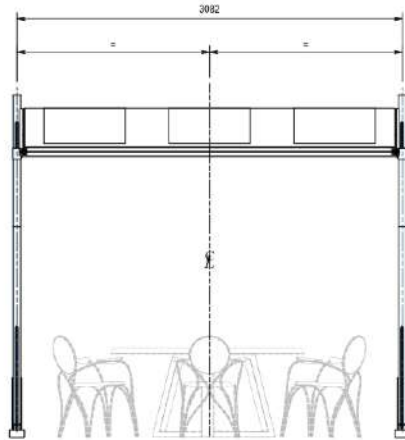


BARREL ARCH

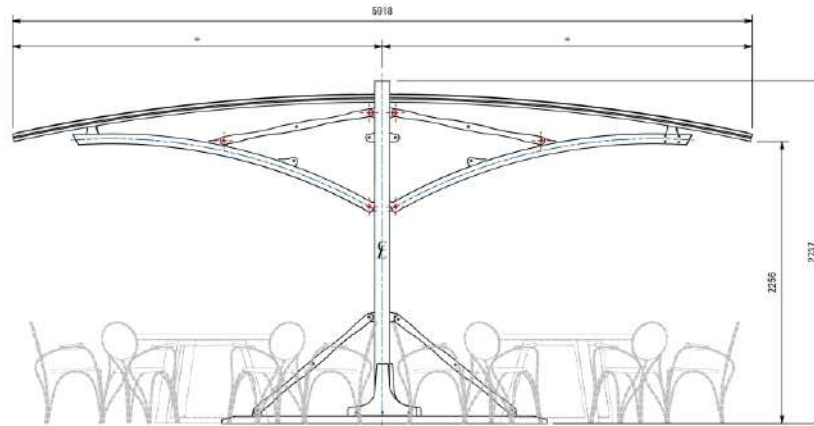


SOLARIS Architectural Solar

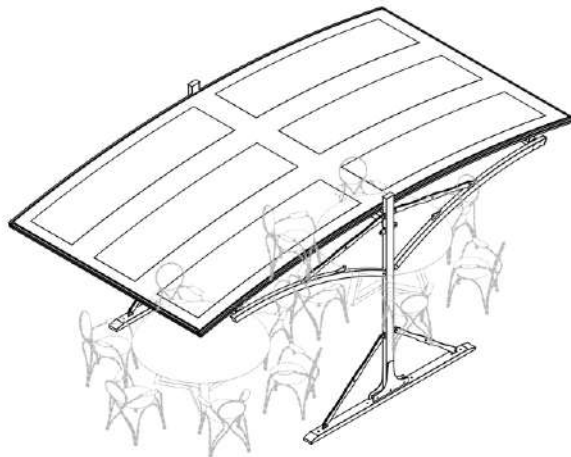
RESTAURANT



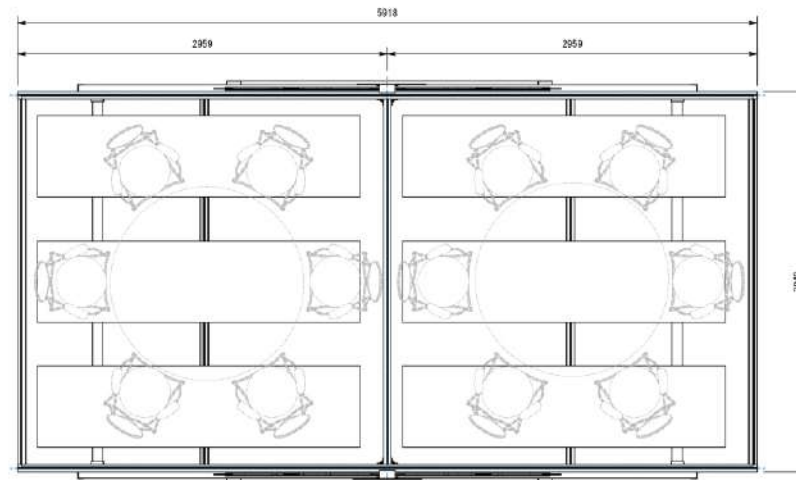
FRONT VIEW
SCALE: (1 : 25)



SIDE VIEW
SCALE: (1 : 25)



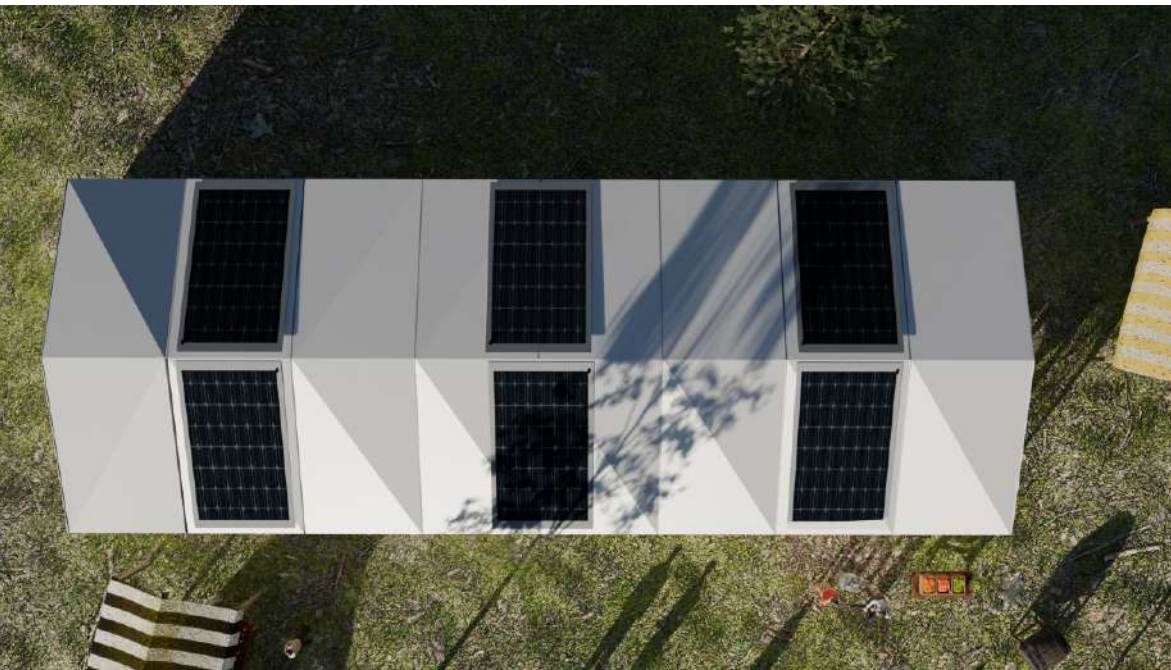
ISOMETRIC VIEW
SCALE: (1 : 35)



PLAN / TOP VIEW
SCALE: (1 : 25)



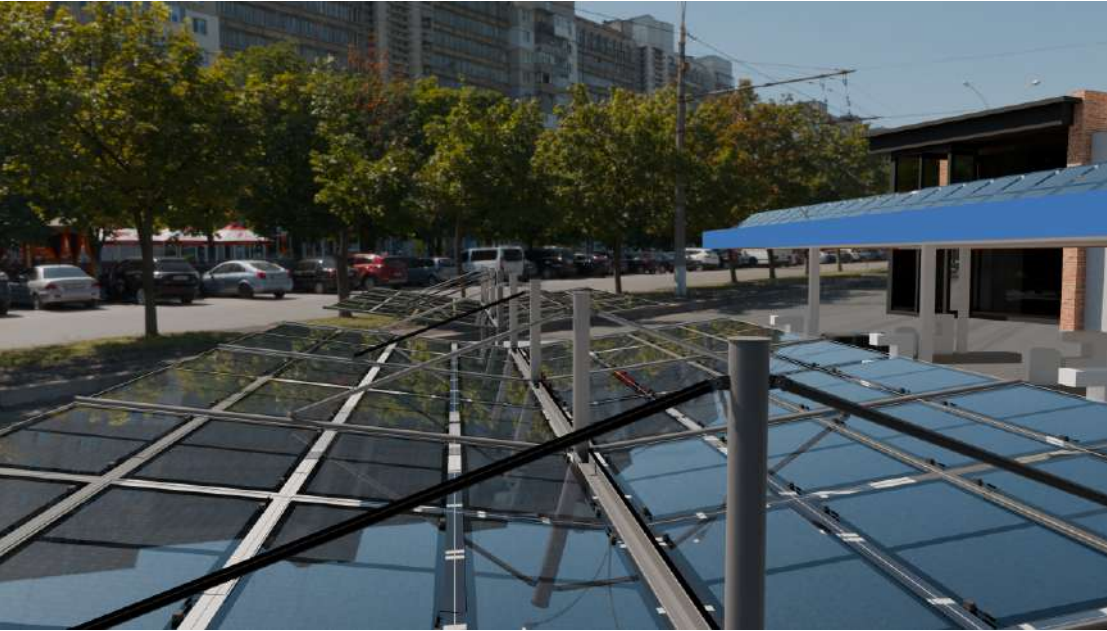
SOLARIS Architectural Solar



MARQUEES



SOLARIS Architectural Solar



FORECOURTS



SOLARIS Architectural Solar



CARAVANS & CAMPERS



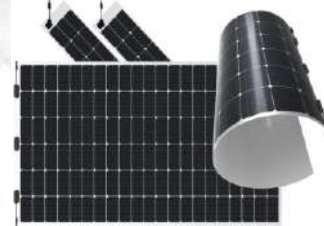
SOLARIS Architectural Solar

padel court enclosures with solar





Flexible Solar Panels
Dimensions: 2 250 x 1 130 x 1.8mm
Rated Power (Watt): 470
Warranty: 10 years
Life Expectancy: 25 years



**THE
FUTURE
IS HERE**

idtcustomawnings.com/solaris

SOLARIS Architectural Solar

BRANDING



idtcustomawnings.com/solaris
sales@indemandtrading.co.za
+27 (0)82 446 0212