



**SAVANNA** Luxury Tents & Habitats



**SAVANNA**  
Luxury Tents & Habitats

Page

1. About us.....	03-07
2. Processes.....	08-14
3. Guest Suites.....	15-29
4. Guest Tents.....	30-50
5. Guest Units.....	51-57
6. Main Areas.....	58-64
7. Examples.....	65-69
8. Facilities Tents.....	70-72
9. Auxiliary Services.....	73-77
9. Social Media Links.....	78



## SAVANNA Luxury Tents & Habitats

Welcome to Savanna Luxury Tents & Habitats, where we are dedicated to designing and crafting exceptional bush lodges that redefine the concept of luxury in the wilderness. With our expertise in creating exquisite tented accommodations and habitats, we bring a unique and unparalleled touch to your next bush lodge project. Let us transform your vision into a breathtaking reality, where luxury and nature converge in perfect harmony.

**Members of our board of directors (Savanna Lodge Development) have been involved with the construction, at senior management or director level, on the following projects (amongst others):**

Kigali International Airport, Rwanda

Radisson Hotel, Rwanda

Bisate Lodge, Rwanda

Marriot Hotel, Rwanda

Serena Hotel, Rwanda

Epic Hotel, Rwanda

Ubumwe Grande Hotel, Rwanda

Nyungwe Forest Lodge, Rwanda

Juba International Airport, South Sudan

Flat Island Resort, Mauritius

Duma Tau Lodge, Botswana

Trojan Nickle Mine, Zimbabwe

Intare Conference Centre, Rwanda

Kariftu Abra Minch, Ethiopia

Private Concession Camp, Kruger Park, South Africa

South African National Parks, Lower Sabi, South Africa

Feather Down Lodge, United Kingdom

Boerenbed, Belgium

## ABOUT US



Marc  
du Plessis



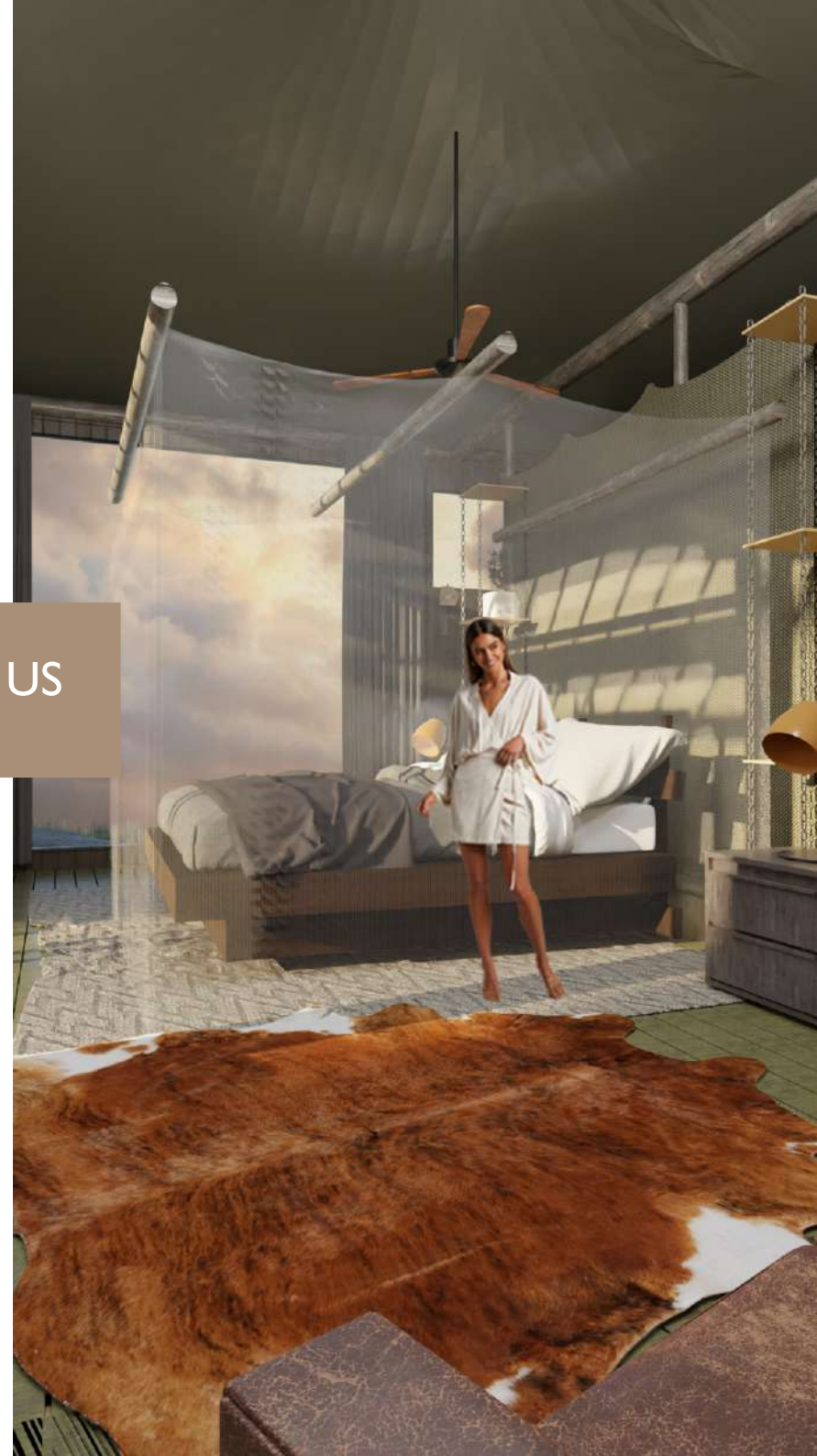
Dave  
Marcussen



George  
Macdonald



Louw  
Botha



# SAVANNA Luxury Tents & Habitats

## 2022 by the numbers

30 years experience

1 000's of projects

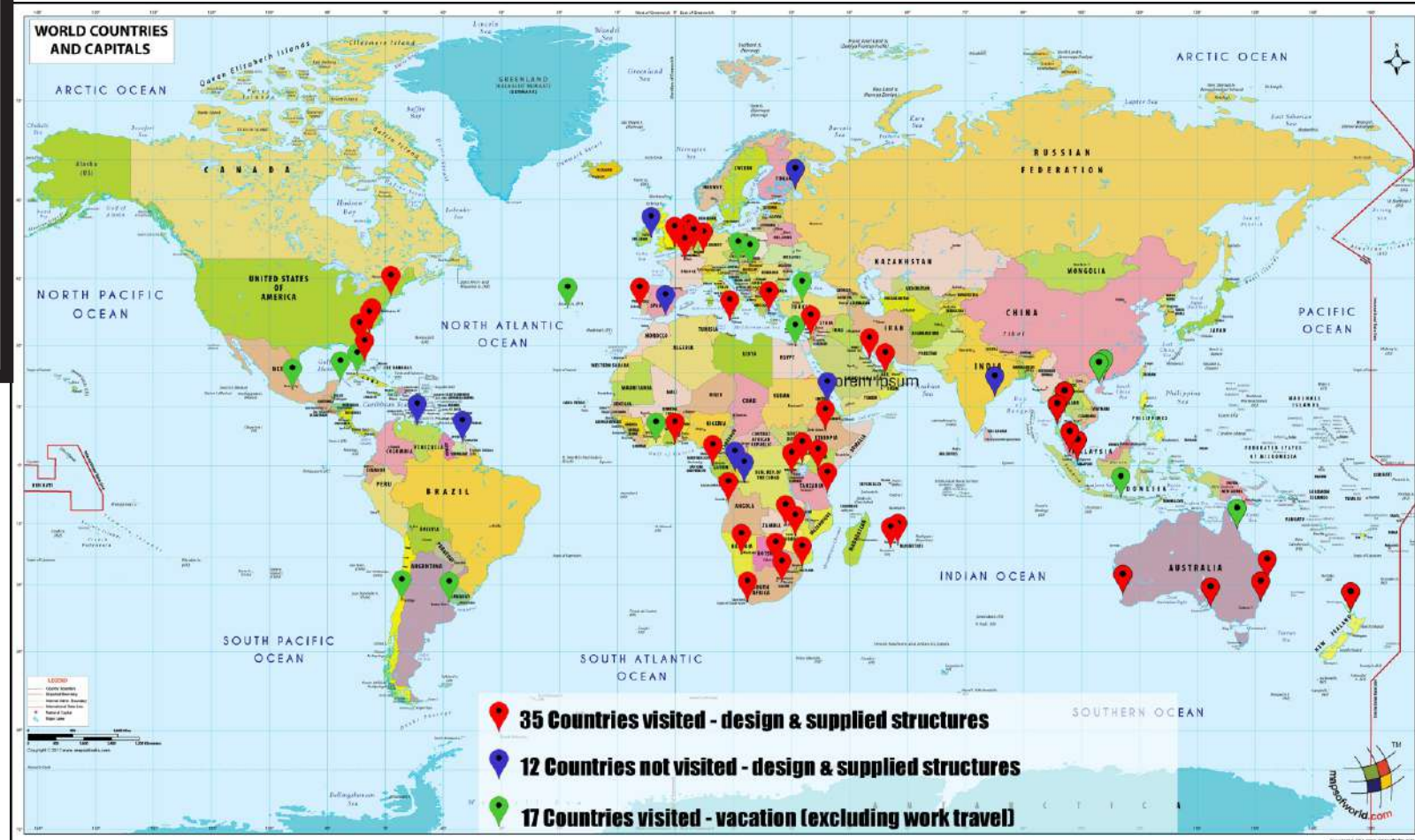
10 000's of structures

47 countries

88 standard designs

10 000's of engineering

& design hours





A modern outdoor deck with a curved roof, wooden decking, and potted plants under a blue sky. The deck is made of light-colored wooden planks and features a curved railing. Several potted plants, including palm trees, are placed on the deck. The background shows a clear blue sky with some clouds and a building with large windows.

BRINGING  
GREAT DESIGNS  
TO LIFE



**SAVANNA** Luxury Tents & Habitats



DAY  
&  
NIGHT



A wooden viewing deck with a dark roof and a wooden railing is positioned on a hillside. The deck provides a clear view of a fenced-in enclosure containing several zebras grazing in tall grass. The background features rolling hills under a cloudy sky. The text "bringing you as close to nature as you dare" is overlaid in white on the central part of the image.

bringing you as close  
to nature as you dare



## SAVANNA Luxury Tents & Habitats

At Savanna Luxury Tents & Habitats we are dedicated to designing and crafting exceptional bush lodges that redefine the concept of luxury in the wilderness. With our expertise in creating exquisite tented accommodation and habitats, we bring a unique and unparalleled touch to your next bush lodge project.

Why choose Savanna Luxury Tents & Habitats to design your next project:

1. Unmatched Expertise
2. Innovative Design Solutions
3. Luxurious Comfort
4. Seamless Integration Solutions
5. Luxurious Comfort
6. Seamless Integration with Nature
7. Tailored to Your Vision
8. Quality Craftsmanship

Choosing Savanna Luxury Tents and Habitats means entrusting your bush lodge project to a team that is passionate, experienced, and dedicated to creating an unforgettable experience for you and your guests. Let us transform your vision into breathtaking reality, where luxury and nature converge in perfect harmony.





# SAVANNA Luxury Tents & Habitats

## FINDING YOU IN EVERY DETAIL

When deciding on the perfect design for your needs there are a number of criteria that need to be taken into account.

Amongst these is how many people must the unit accommodate. What is the expected lifespan of the structure. Do you require us to include the electrical works, the plumbing, sanitary ware, deck and the civils.



Function of the structure to provide shade or rain protection. What weather conditions can we expect & what weather conditions need to be taken into account in the design.

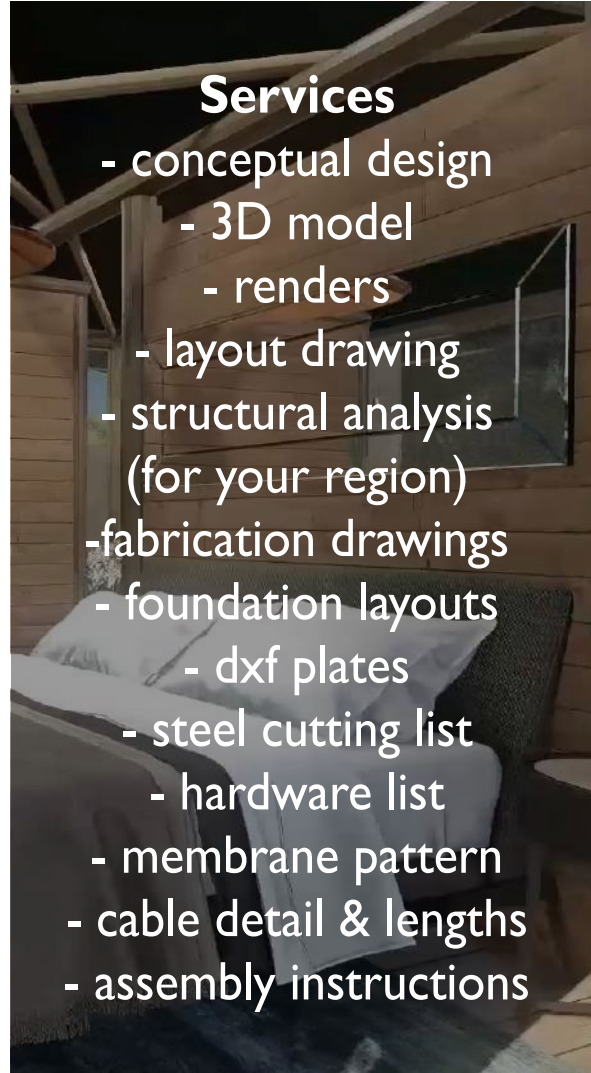


Preferred design. There are many designs that we can offer in both standard and bespoke designs. We work with you to determine the best fit for your requirements.



Do you require an engineer's sign off on the project or do you just require the structural analysis report that we routinely offer to our clients for each project we undertake.

## SAVANNA Luxury Tents & Habitats





# SAVANNA Luxury Tents & Habitats

## INSIST ON A STRUCTURAL ANALYSIS



**LET US DESIGN YOU NEXT...**

# TIMELINE

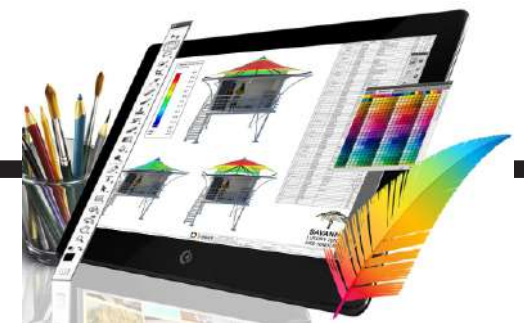


## DESIGN



In general the design process takes about 7 working days. This includes the layout drawings, renders and membrane patterns.

## ANALYSIS



Structural analysis is conducted by country and by region in accordance with the required wind load codes of the region. This process can take up to a week depending on the complexity of the design.



# SAVANNA Luxury Tents & Habitats

## FABRICATION

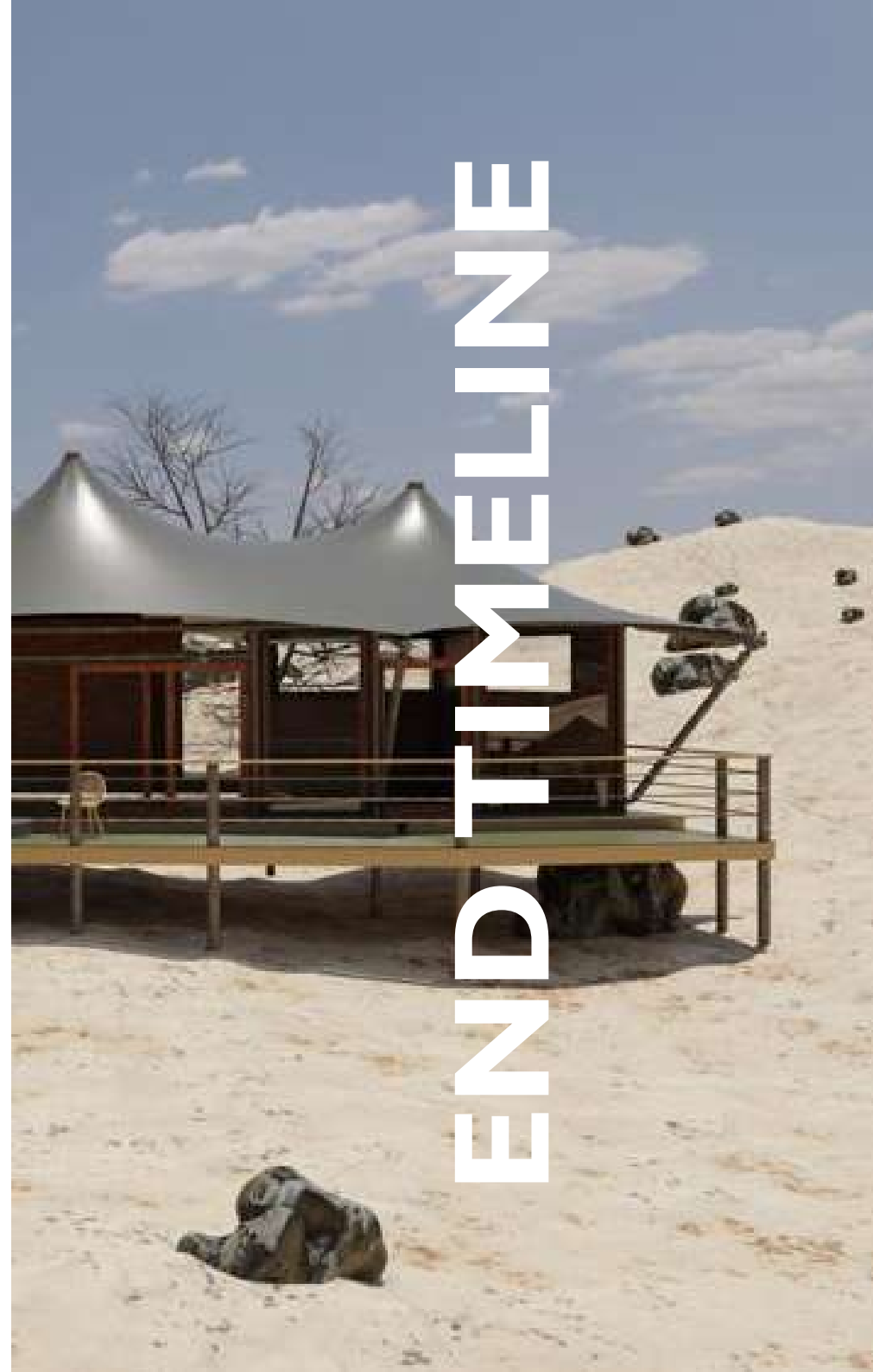


Fabrication process takes about 4-6 weeks. This will include the costing, procurement, receipt of materials, fabrication & coating.

## INSTALLATION



The time on site is totally dependant on the complexity of the structure. Site visits are normally broken up into foundations and the installation of the actual structure.



END  
TIMELINE

# SAVANNA Luxury Tents & Habitats

## Steel Frame

Steel frames are ideal for high wind areas, snow load areas and elevated structures. Very low maintenance.



## 2 Wood Frame

Wooden frame blends naturally into the environment. They require more maintenance than steel framed structures.





**SAVANNA** Luxury Tents & Habitats

**GUEST SUITES**  
**(Timber & Glass Walls)**

## SAVANNA Luxury Tents & Habitats



## SAUGAGE Guest Suite

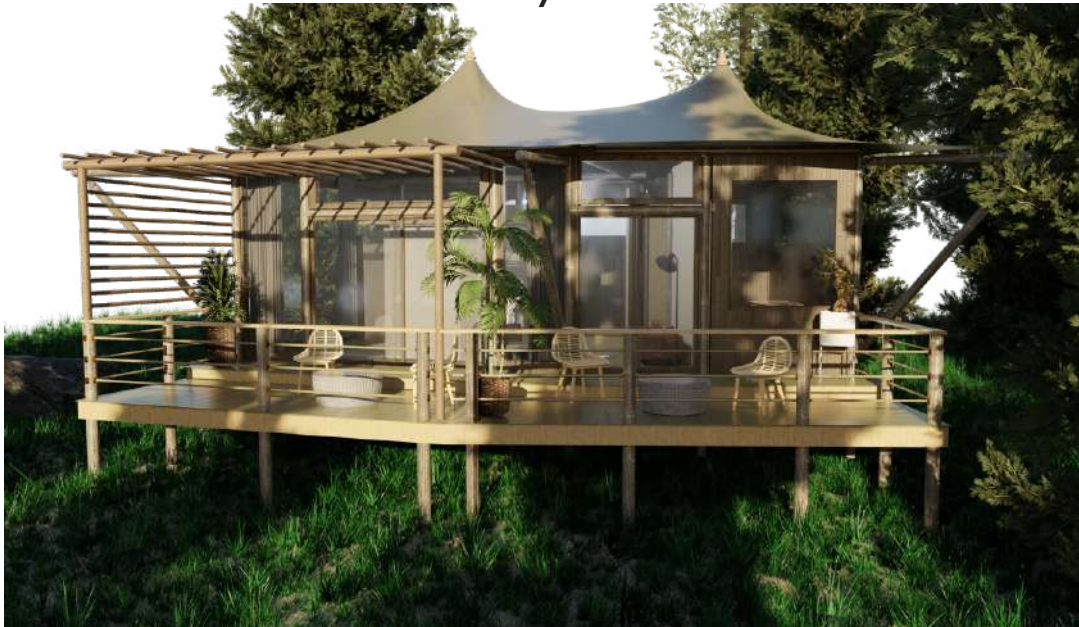


Living area size:	Width 5.1m x Length 9.1m
Membrane area size:	Width 7.7m x Length 11.1m
Deck Area:	8.4m x 8.9m
Balcony:	Timber.
Frame Material:	Outer roof Architectural PVC
Membrane material selection:	Inner Tenting
	28.0 m <sup>2</sup>
Walling:	Timber & Framed Glass
Wind load:	144km/h.
	<a href="https://www.idtcustomawnings.shop/saugageguestsuite">https://www.idtcustomawnings.shop/saugageguestsuite</a>

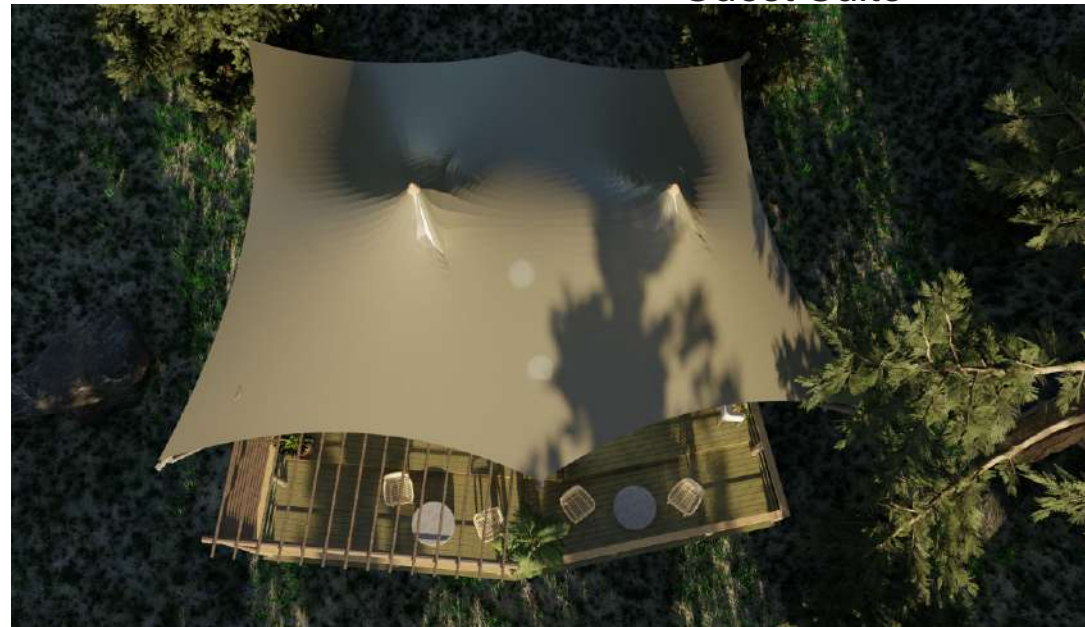




## SAVANNA Luxury Tents & Habitats



## CAMELTHORN Guest Suite

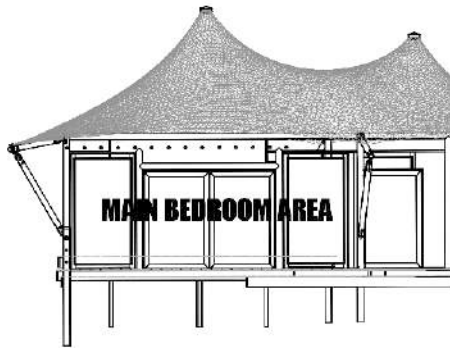


Living area size: Width 5.1m x Length 9.1m  
Membrane area size: Width 7.7m x Length 11.1m  
Deck Area: 8.4m x 8.9m  
Balcony: 28.0 m<sup>2</sup>  
Frame Material: Timber  
Membrane material selection: Outer roof Architectural PVC  
Inner Tenting  
Walling: Timber & Framed Glass  
Wind load: 144 km/h  
<https://www.idtcustomawnings.shop/camel-thorn-guest-suite>

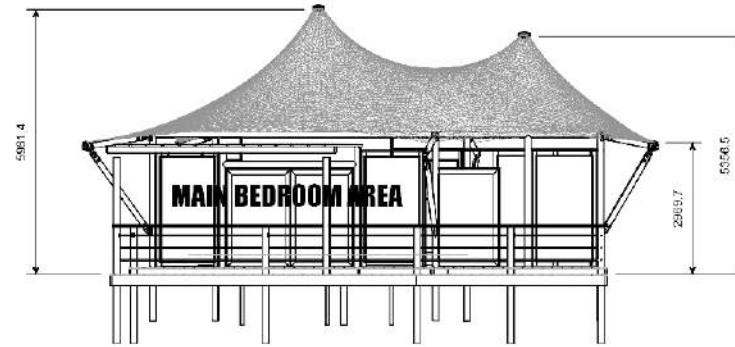


# SAVANNA Luxury Tents & Habitats

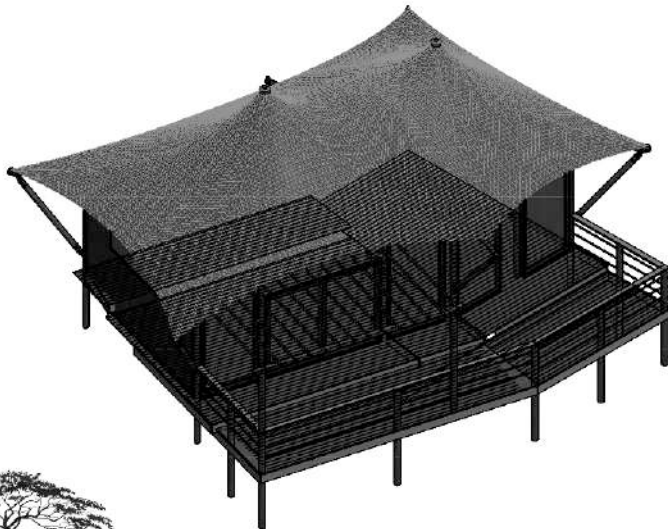
# CAMELTHORN Guest Suite



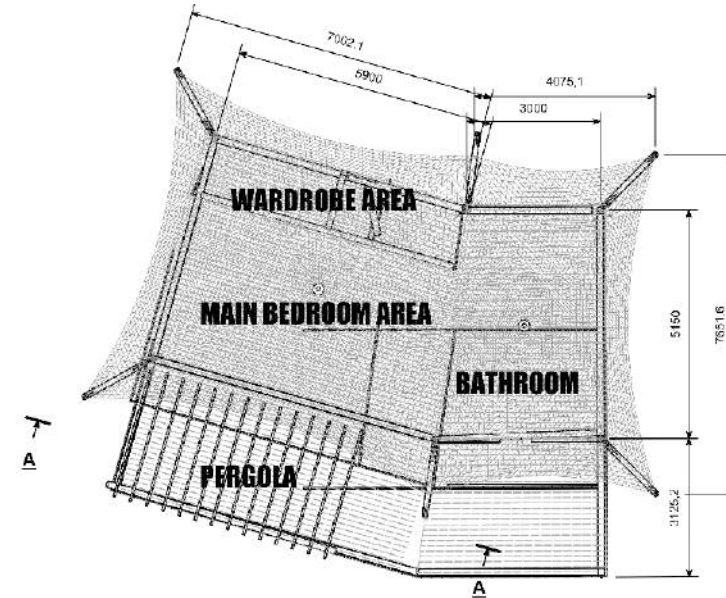
**SECTION A-A**  
SCALE: (1 : 100)



**FRONT VIEW**  
SCALE: (1 : 100)



**ISOMETRIC VIEW**  
SCALE: (1 : 100)



**PLAN / TOP VIEW**  
SCALE: (1 : 100)



**SAVANNA**  
LUXURY TENTS & HABITATS

**DI TENSILE** EST. 1977/2014

IN GRANAROLI TENDERS (PTY) LTD

WE SPECIALISE IN THE DESIGN AND CONSTRUCTION OF HIGH QUALITY TENTS AND HABITATS FOR THE TOURISM AND EVENTS INDUSTRY. WE ARE NOW OFFERING OUR SERVICES TO THE WIDER COMMUNITY AND WE WELCOME YOUR BUSINESS.

Informatie: (020) 712 1111 | Reg. Number: 2014/01552/09 | N. Number: 540793

2023 Homeplan (New) Draft 1 Level 10 - Stepping Stones (Owner) - Working - 2162117.dwg - 27/10/23 10:23:45:00 | Rev: 02 | 01/09/2023

USER: Paul Jacobs	APP: 001	USER: 001	GROUP: 001	PROJECT: 10024 - Guest Suite	DATE: 2023-10-27
PROJECT: A3	SCALE: 1:100	PROJECT CODE: 10024-GA-0001	DO NOT SCALE	PROJECT: 10024 - Guest Suite	DATE: 2023-10-27
				DESCRIPTION: - Project Assembly	





## SAVANNA Luxury Tents & Habitats



## MARULA Guest Suite

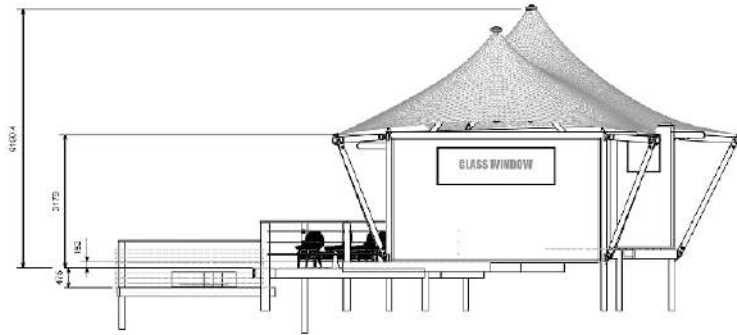


Living area size:	Width 5.1m x Length 9.1m
Membrane area size:	Width 7.7m x Length 11.1m
Deck Area:	8.4m x 8.9m
Balcony:	Timber.
Frame Material:	Outer roof Architectural PVC
Membrane material selection:	Inner Tenting Canvas
	28.0 m <sup>2</sup>
Walling:	Timber & Framed Glass
Wind load:	144km/h
Fire Pit:	3.6 x 3.0m
	<a href="https://www.idtcustomawnings.shop/marula-guest-suite">https://www.idtcustomawnings.shop/marula-guest-suite</a>

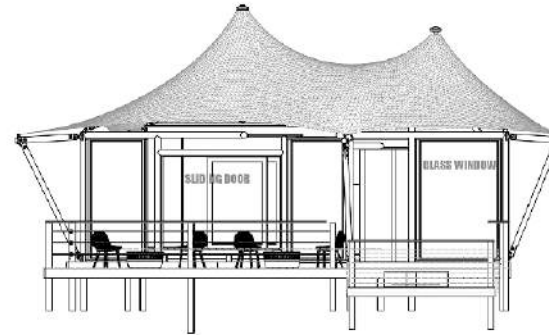


# SAVANNA Luxury Tents & Habitats

# MARULA Guest Suite



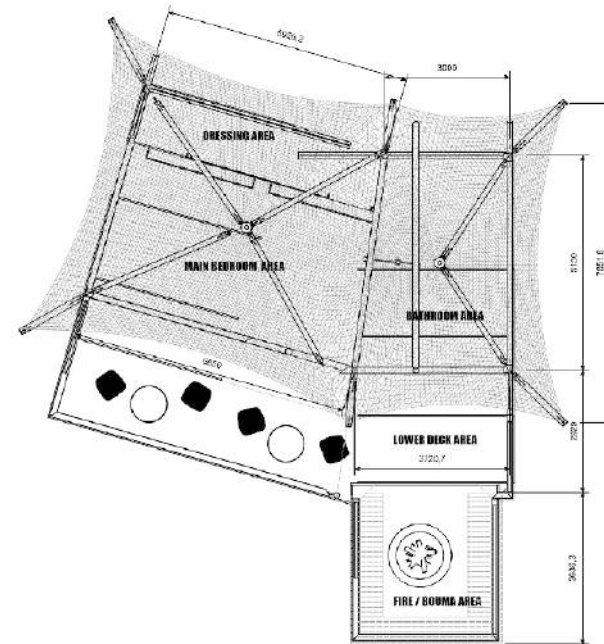
**SIDE VIEW**  
SCALE: (1 : 75)



**FRONT VIEW**  
SCALE: (1 : 75)



**ISOMETRIC VIEW**  
SCALE: (1 : 65)



**PLAN / TOP VIEW**  
SCALE: (1 : 75)



PROJ. N°	100274-A-001	PROJ. N°	100274-A-001
PROJ. N°	100274-A-001	PROJ. N°	100274-A-001
PROJ. N°	100274-A-001	PROJ. N°	100274-A-001

PROJ. N°	100274-A-001	PROJ. N°	100274-A-001
PROJ. N°	100274-A-001	PROJ. N°	100274-A-001
PROJ. N°	100274-A-001	PROJ. N°	100274-A-001



## SAVANNA Luxury Tents & Habitats



## BIRCHWOOD TWIN Guest Suite



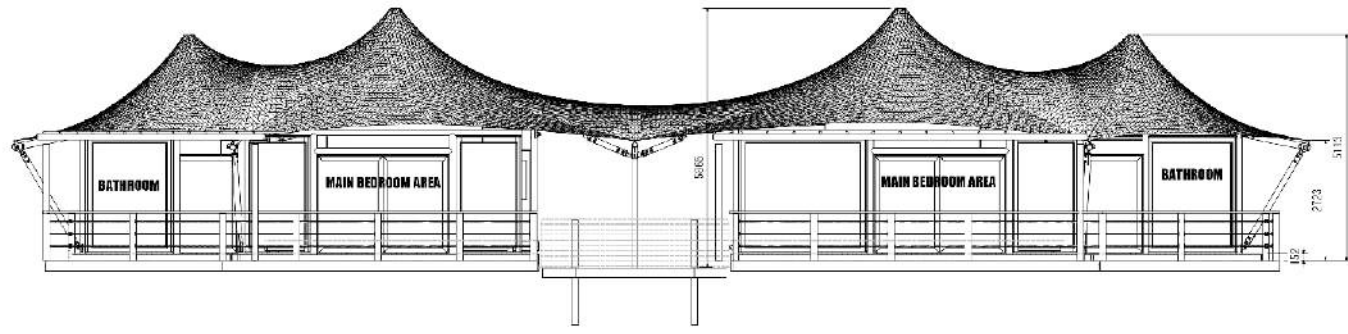
Living area size:	Width 5.1m x Length 23.1m
Membrane area size:	Width 7.7m x Length 11.1m
Deck Area:	8.3m x 23.1m
Balcony:	65.0 m <sup>2</sup>
Frame Material:	Frame Material: Timber.
Membrane material selection:	Outer roof Architectural PVC Inner Tenting
Walling:	Timber & Framed Glass
Wind load:	144km/h
Fire Pit:	

<https://www.idtcustomawnings.shop/birchwoodtwinguestsuite>

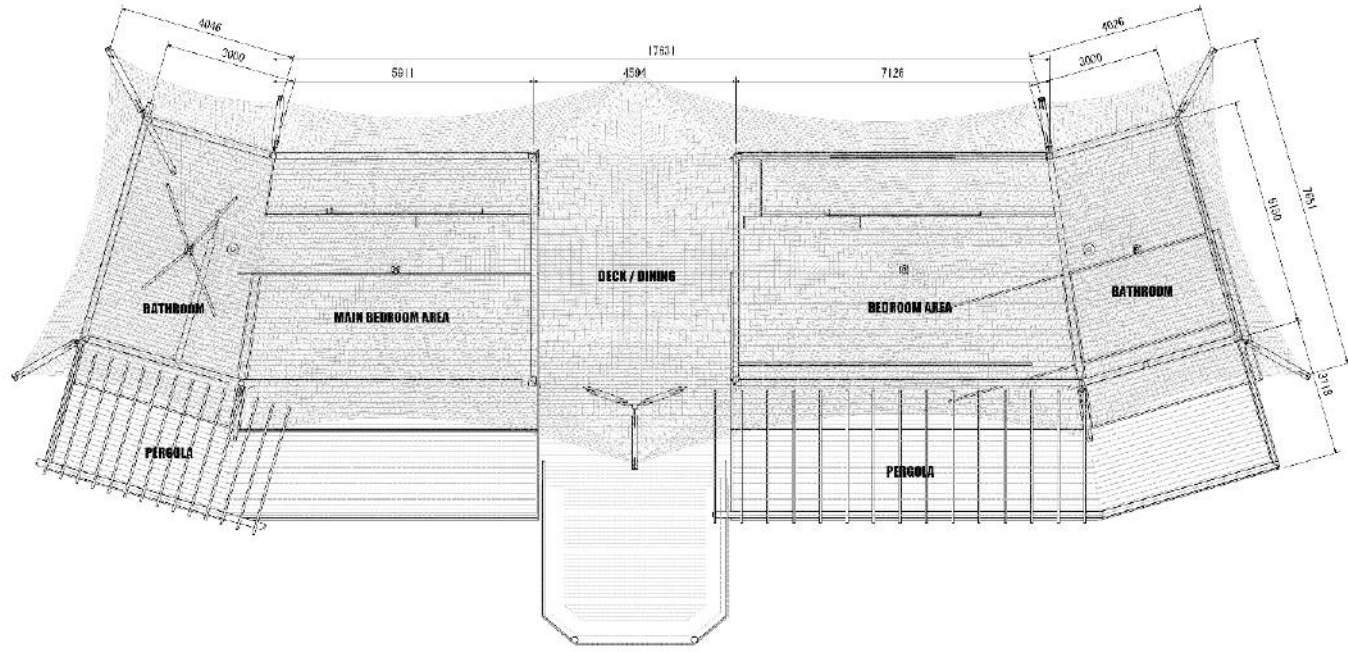


# SAVANNA Luxury Tents & Habitats

# BIRCHWOOD TWIN Guest Suite



FRONT VIEW  
SCALE: 1:40



PLAN / TOP VIEW  
SCALE: 1:40

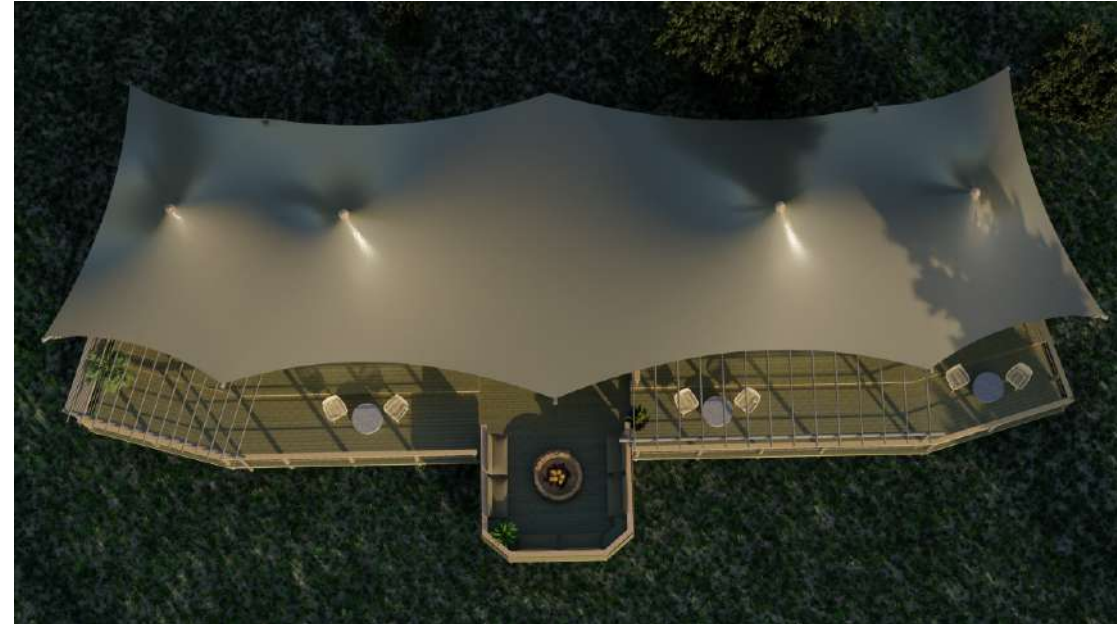


		<small>SAVANNA LUXURY TENTS &amp; HABITATS</small>		<small>SAVANNA LUXURY TENTS &amp; HABITATS</small>	
<small>Project Name:</small> BIRCHWOOD TWIN	<small>Client:</small> [REDACTED]	<small>Site:</small> [REDACTED]	<small>Area:</small> [REDACTED]	<small>Scale:</small> 1:40	<small>Date:</small> 2023-10-01
<small>Drawn by:</small> [REDACTED]	<small>Checked by:</small> [REDACTED]	<small>Approved by:</small> [REDACTED]	<small>Project Manager:</small> [REDACTED]	<small>Project Engineer:</small> [REDACTED]	<small>Project Architect:</small> [REDACTED]

## SAVANNA Luxury Tents & Habitats



## LEADWOOD TWIN Guest Suite



Living area size:	Width 5.1m x Length 23.1m
Membrane area size:	Width 7.7m x Length 11.1m
Deck Area:	8.3m x 23.1m
Balcony:	65.0 m <sup>2</sup>
Frame Material:	Timber
Membrane material selection:	Outer roof Architectural PVC Inner Tenting
Walling:	Timber & Framed Glass
Wind load:	144km/h
Fire Pit:	4.6 x 3.0m
	<a href="https://www.idtcustomawnings.shop/leadwoodtwinguestsuite">https://www.idtcustomawnings.shop/leadwoodtwinguestsuite</a>

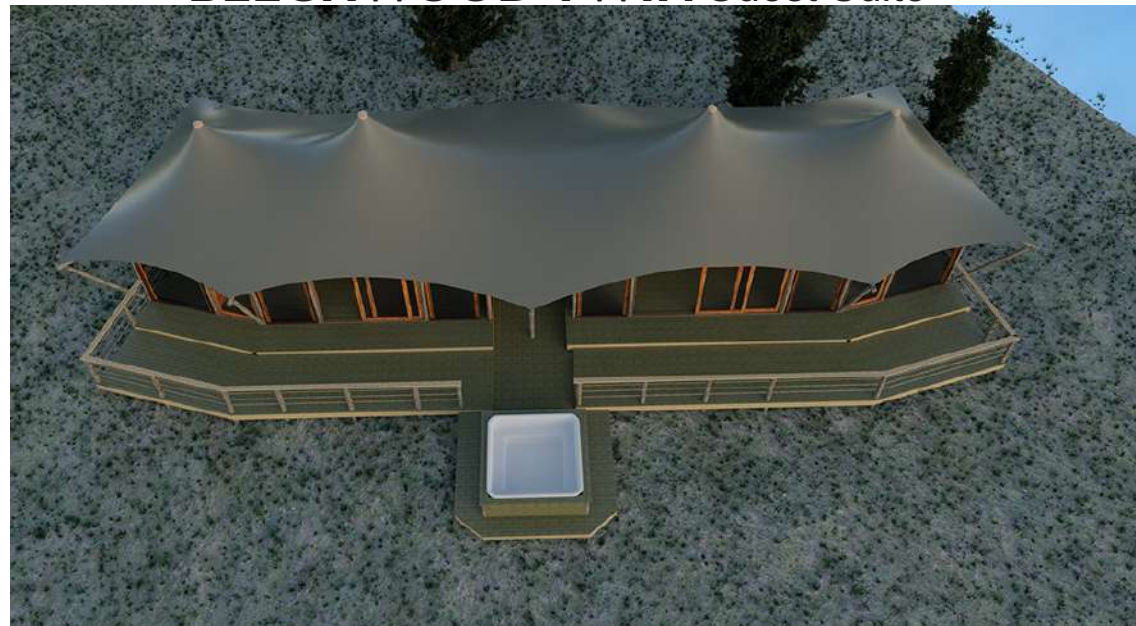




## SAVANNA Luxury Tents & Habitats



## BEECHWOOD TWIN Guest Suite

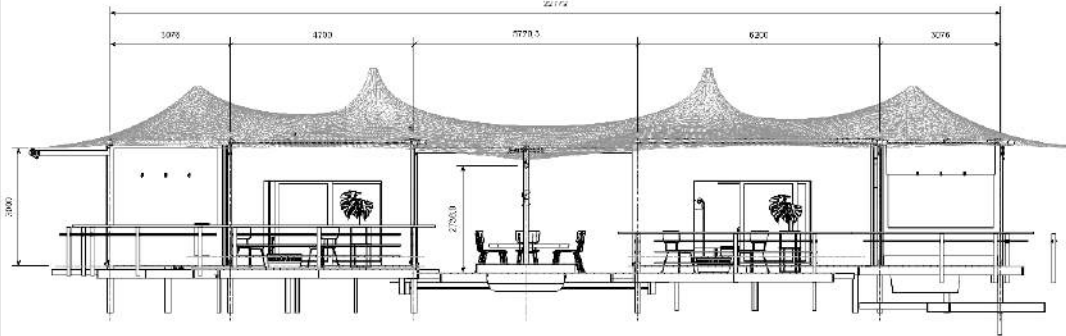


Living area size:	Width 5.1m x Length 23.1m
Membrane area size:	Width 7.7m x Length 11.1m
Deck Area:	8.3m x 23.1m
Balcony:	65.0 m <sup>2</sup>
Frame Material:	Frame Material: Timber.
Membrane material selection:	Outer roof Architectural PVC Inner Tenting
Walling:	Timber & Framed Glass
Wind load:	144km/h
Jacuzzi:	2070 x 2070 x 1015mm
	<a href="https://www.idtcustomawnings.shop/beechwoodtwinguestsuite">https://www.idtcustomawnings.shop/beechwoodtwinguestsuite</a>

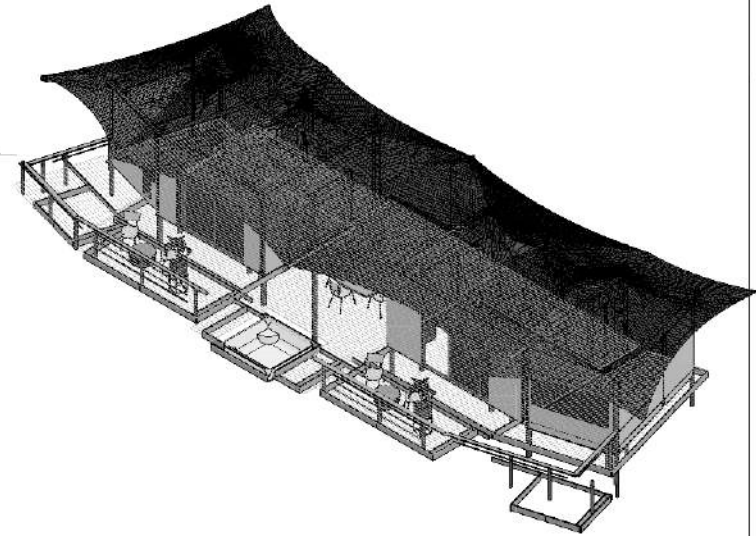


# SAVANNA Luxury Tents & Habitats

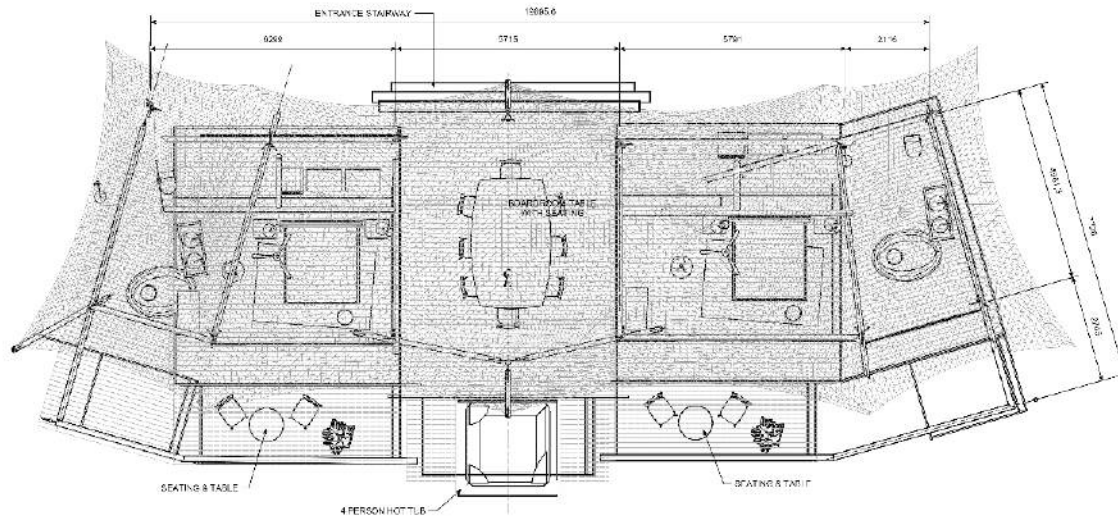
# BEECHWOOD TWIN Guest Suite



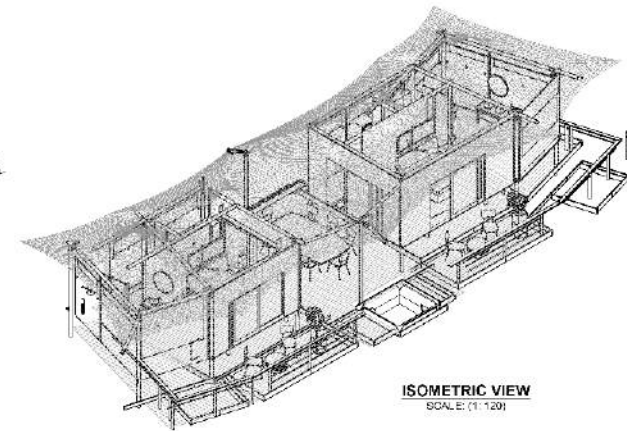
**FRONT VIEW**  
SCALE: (1 : 80)



**SIDE VIEW4**  
SCALE: (1 : 100)



**PLAN / TOP VIEW**  
SCALE: (1 : 80)



**ISOMETRIC VIEW**  
SCALE: (1 : 120)



**SAVANNA**  
LUXURY TENTS & HABITATS

**DITENSILE**

EST. 1978  
MEMBER OF THE  
DITENSILE GROUP

Paul Jacobs  
AP 1.63 10026 GA 0001

DO NOT SCALE

10026 Awash Presidential Suite

Member of Assembly

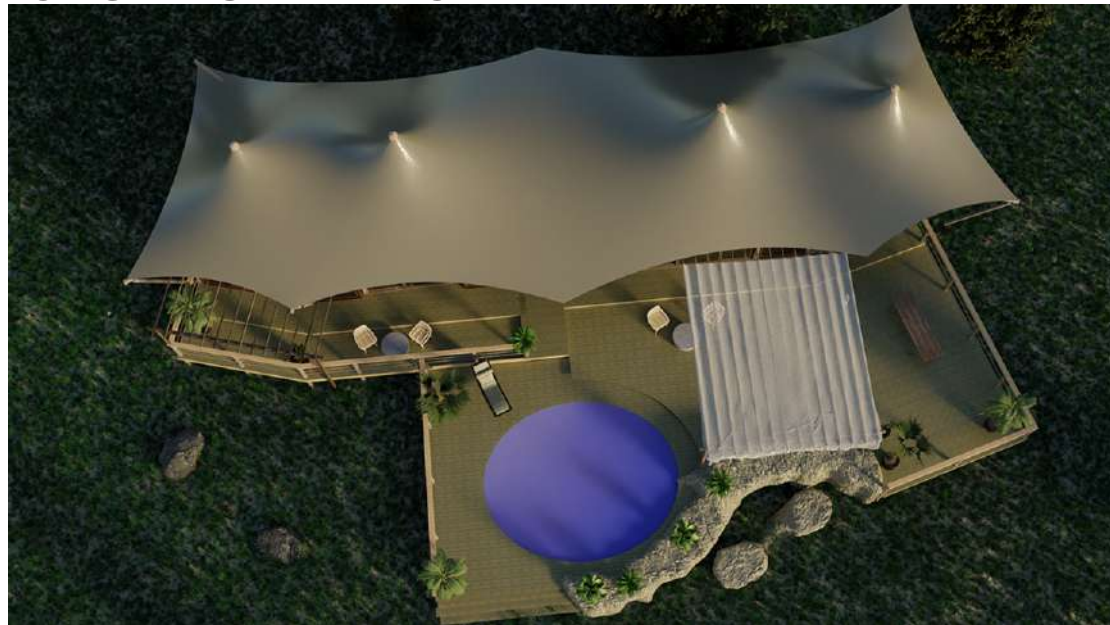




## SAVANNA Luxury Tents & Habitats



## SYCAMORE PRESIDENTIAL Guest Suite

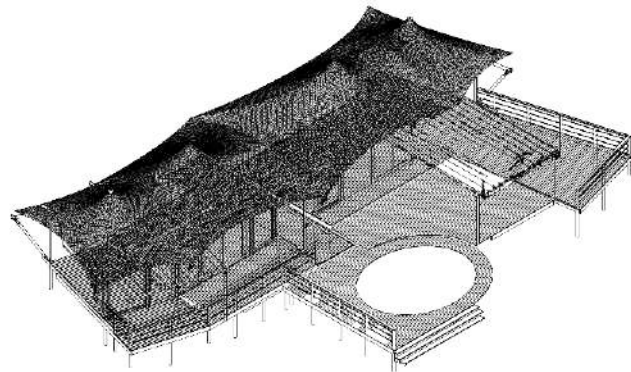
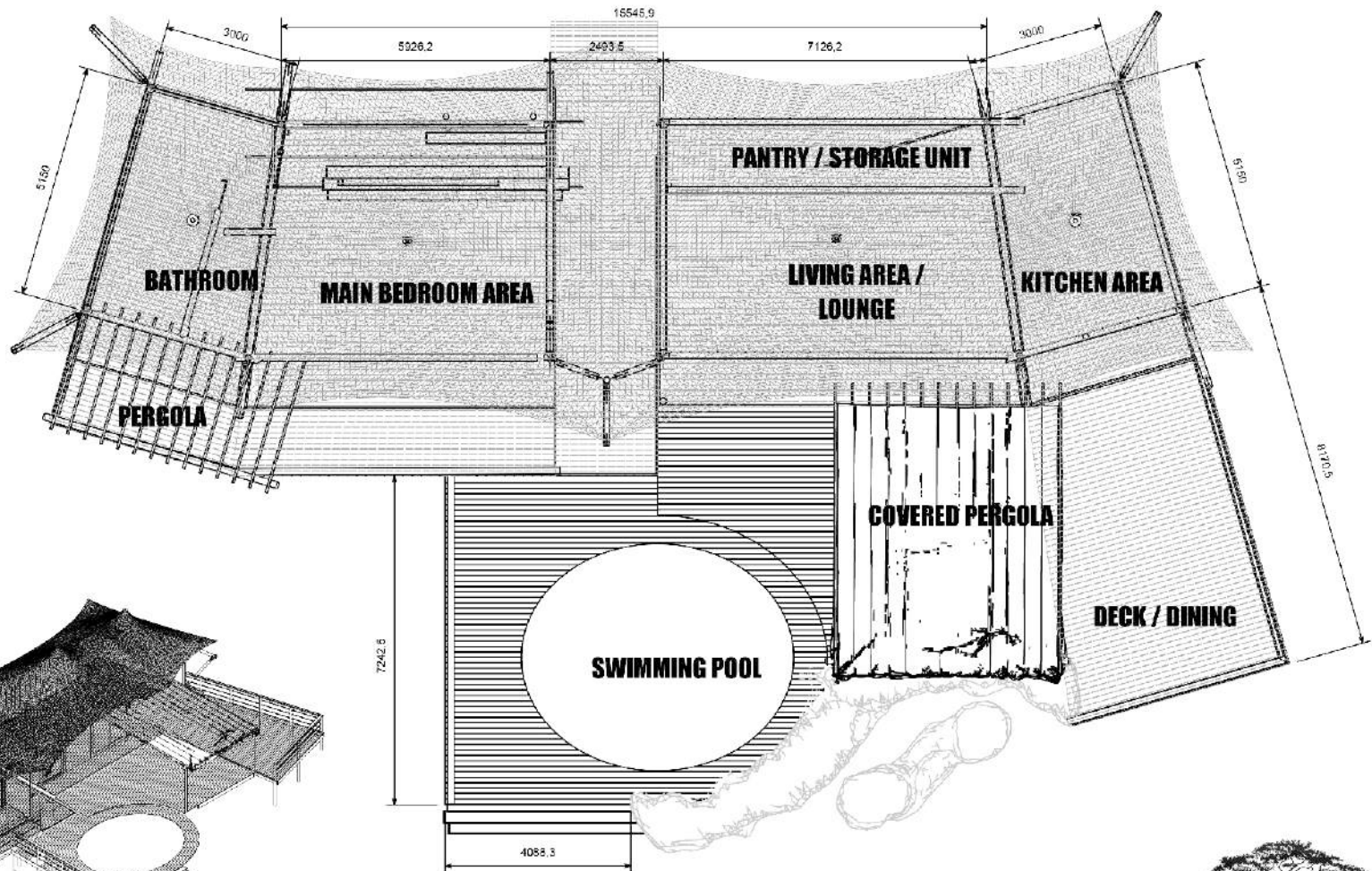


Living area size:	Width 5.1 m x Length 21.5m
Membrane area size:	Width 9.7m x Length 25.1m
Deck Area:	8.3m x 23.1m
Balcony:	191.0 m <sup>2</sup>
Frame Material:	Timber.
Membrane material selection:	Outer roof Architectural PVC Inner Tenting
Walling:	Timber & Framed Glass
Wind load:	144km/h
Swimming Pool:	5m diameter
	<a href="https://www.idtcustomawnings.shop/sycamorepresidentialguestsuite">https://www.idtcustomawnings.shop/sycamorepresidentialguestsuite</a>



# SAVANNA Luxury Tents & Habitats

# SYCAMORE PRESIDENTIAL Guest Suite



**PLAN / TOP VIEW**  
SCALE: (1 : 90)



**SAVANNA**  
LUXURY TENTS & HABITATS



ON DEMAND TRADING (PTY) LTD  
THE COVERING OF THIS DRAWING IS THE  
SOLE PROPERTY OF ON DEMAND TRADING (PTY) LTD  
NO PART OF THIS DRAWING IS TO BE  
REPRODUCED OR TRANSMITTED IN ANY  
FORM OR BY ANY MEANS, WITHOUT THE WRITTEN  
CONSENT OF ON DEMAND TRADING (PTY) LTD

4 Denham Trading (Pty) Ltd | Reg. No: 2011/0175220/06 | PO Box: 644716

CLIENT:	DATE:	PROJECT:	SCALE:	PROJECT NO:
Paul Jacobs				10026 - Presidential Suite
NO. OF SHEETS:	NO. OF SHEETS USED:	PROJECT NO:	SCALE:	PROJECT NO:
A3	1:90	10026-PA-0001	DO NOT SCALE	10026 - Presidential Suite

PROJECT NO:	SCALE:	PROJECT NO:	SCALE:
10026 - Presidential Suite	DO NOT SCALE	10026 - Presidential Suite	DO NOT SCALE
PROJECT NO:	SCALE:	PROJECT NO:	SCALE:

- Membrane 01 Assembly



**SAVANNA** Luxury Tents & Habitats

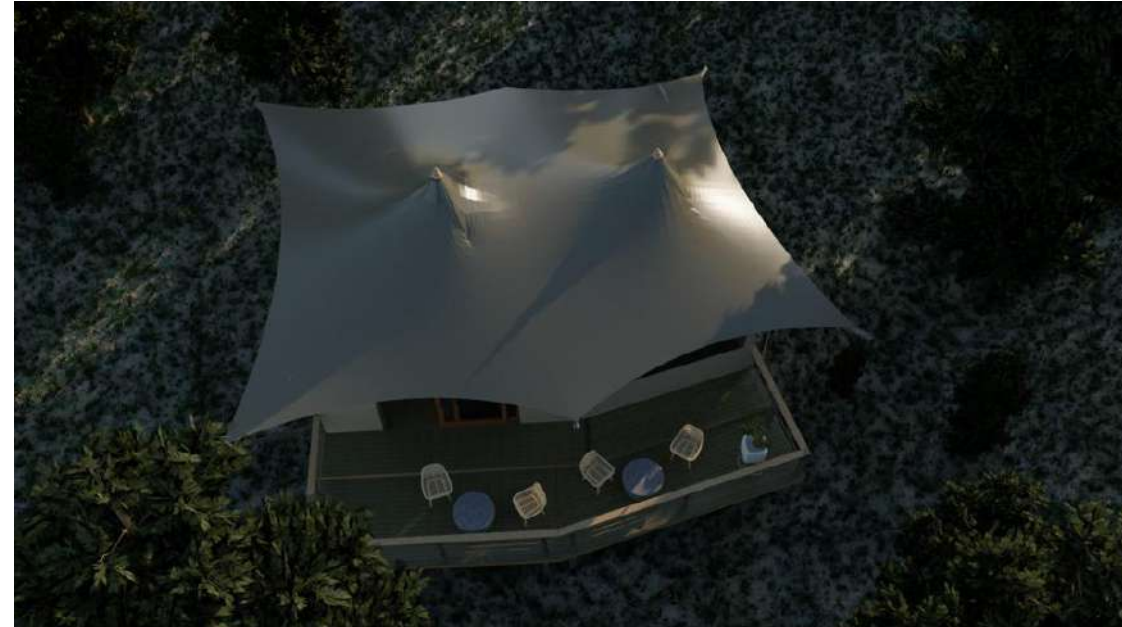
**GUEST TENTS**  
**(Canvas Walls)**



## SAVANNA Luxury Tents & Habitats



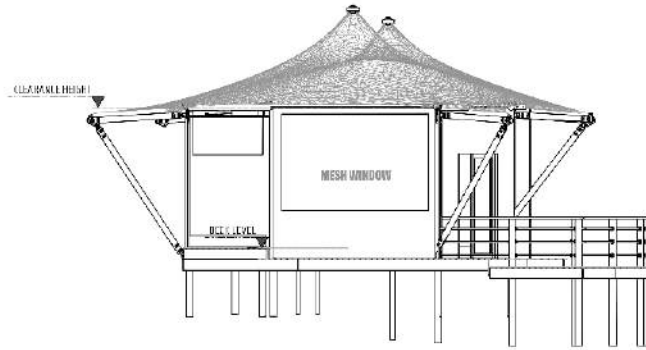
## MOPANE Guest Tent



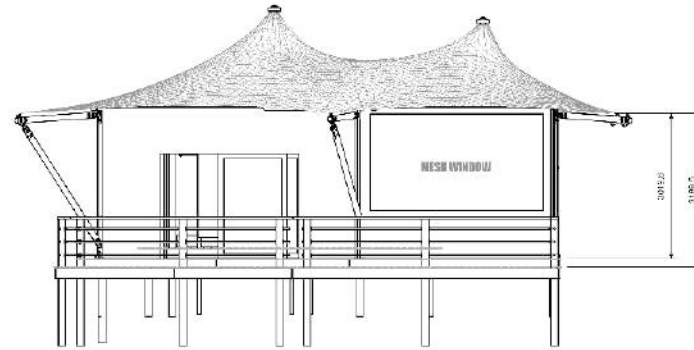
Living area size:	Width 5.1m x Length 8.0m
Membrane area size:	Width 8.0m x Length 10.1m
Deck Area:	8.0m x 2.7m
Balcony:	22.0 m <sup>2</sup>
Frame Material:	Timber
Membrane material selection:	Outer roof Architectural PVC Inner Tenting
Walling:	Rip Stop
Wind load:	144km/h
	<a href="https://www.idtcustomawnings.shop/mopaneguestsuite">https://www.idtcustomawnings.shop/mopaneguestsuite</a>

# SAVANNA Luxury Tents & Habitats

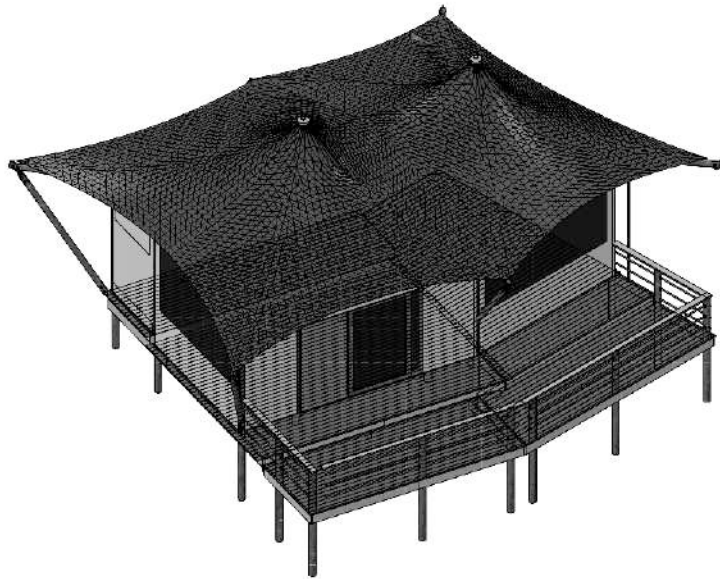
# MOPANE Guest Tent



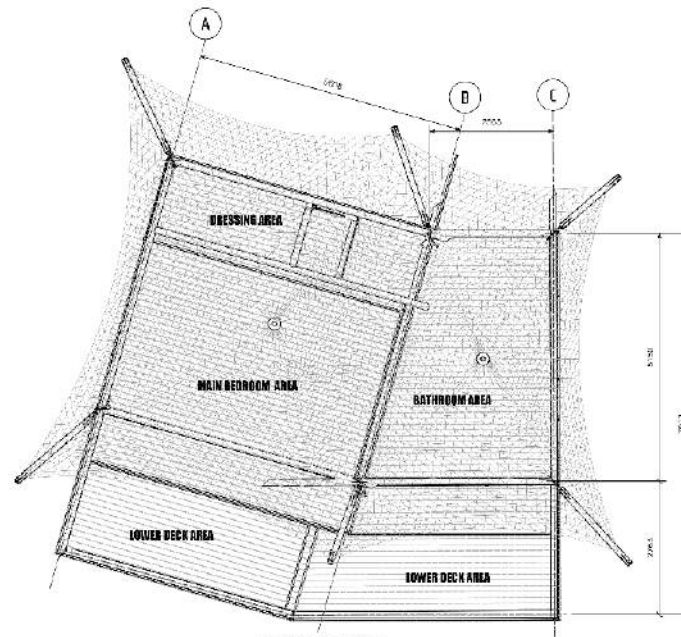
**SIDE VIEW 4**  
SCALE: (1 : 65)



**FRONT VIEW**  
SCALE: (1 : 65)



**ISOMETRIC VIEW**  
SCALE: (1 : 65)



**PLAN / TOP VIEW**  
SCALE: (1 : 65)



## SAVANNA Luxury Tents & Habitats



## THE BEAN STD Guest Tent



Living area size:	Width 6.0m x Length 6.0m
Membrane area size:	Width 9.0m x Length 9.0m
Deck Area:	8.0m x 6.0m
Balcony:	12.0 m <sup>2</sup>
Frame Material:	Timber
Membrane material selection:	Outer roof Architectural PVC Inner Tenting
Walling:	Ripstop
Wind load:	144km/h
<a href="https://www.idtcustomawnings.shop/thebean">https://www.idtcustomawnings.shop/thebean</a>	





## SAVANNA Luxury Tents & Habitats



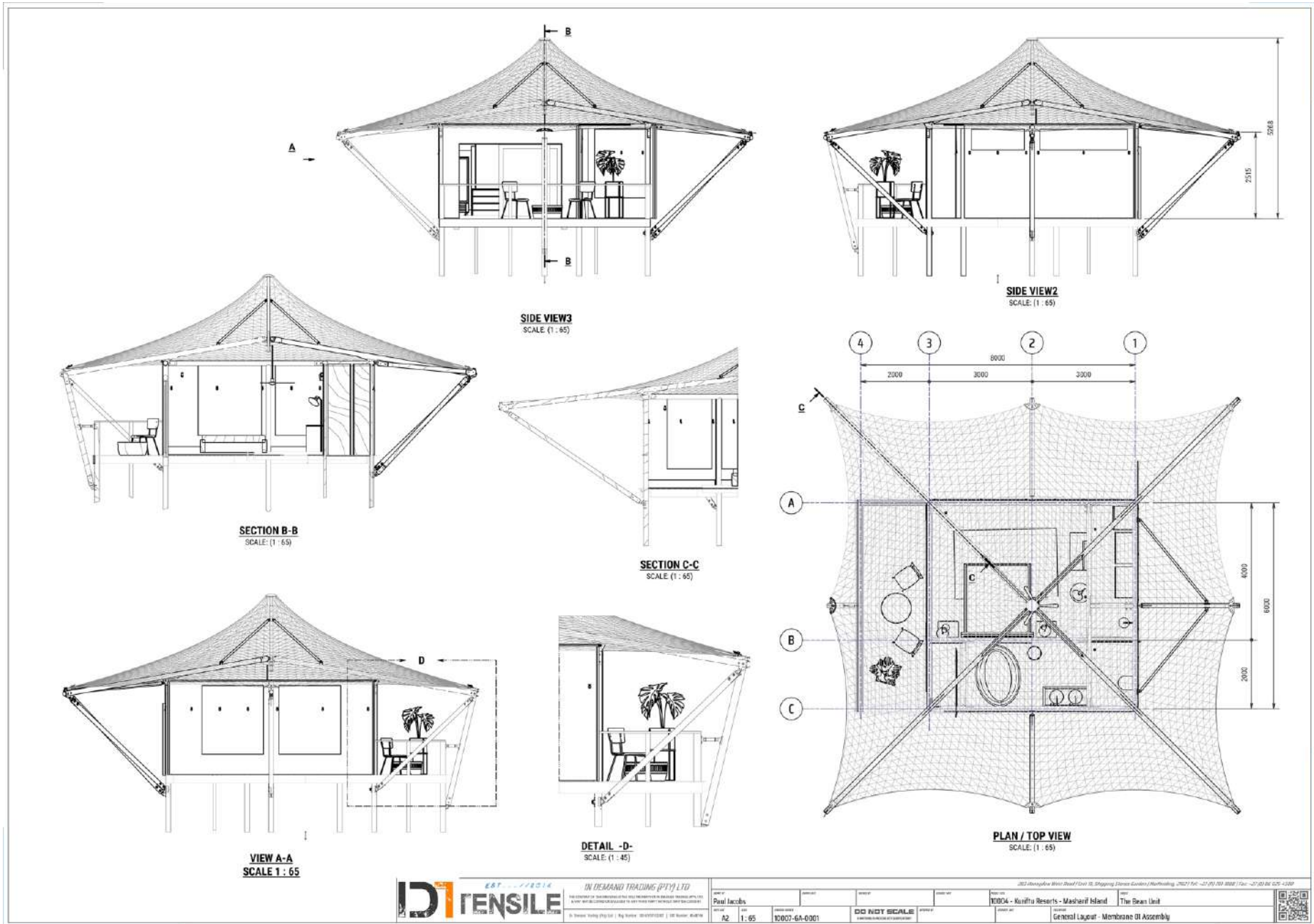
## THE BEAN PRO Guest Tent



Living area size:	Width 6.0m x Length 6.0m
Membrane area size:	Width 12.0m x Length 12.0m
Deck Area:	8.0m x 6.0m
Balcony:	12.0 m <sup>2</sup>
Frame Material:	Timber
Membrane material selection:	Outer roof Architectural PVC Inner Tenting
Walling:	Ripstop
Wind load:	144km/h
<a href="https://www.idtcustomawnings.shop/the-bean-pro">https://www.idtcustomawnings.shop/the-bean-pro</a>	

# SAVANNA Luxury Tents & Habitats

# THE BEAN PRO Guest Tent





## SAVANNA Luxury Tents & Habitats



## BUFFALOTHORN Guest Tent



Living area size:	Width 8.0m x Length 8.0m
Membrane area size:	Width 12.0m x Length 12.0m
Deck Area:	10.0m x 9.0m
Balcony:	16.0 m <sup>2</sup>
Frame Material:	Timber
Membrane material selection:	Outer roof Architectural PVC Inner Tenting
Walling:	Ripstop
Wind load:	144km/h
	<a href="https://www.idtcustomawnings.shop/buffalothorn">https://www.idtcustomawnings.shop/buffalothorn</a>





## SAVANNA Luxury Tents & Habitats



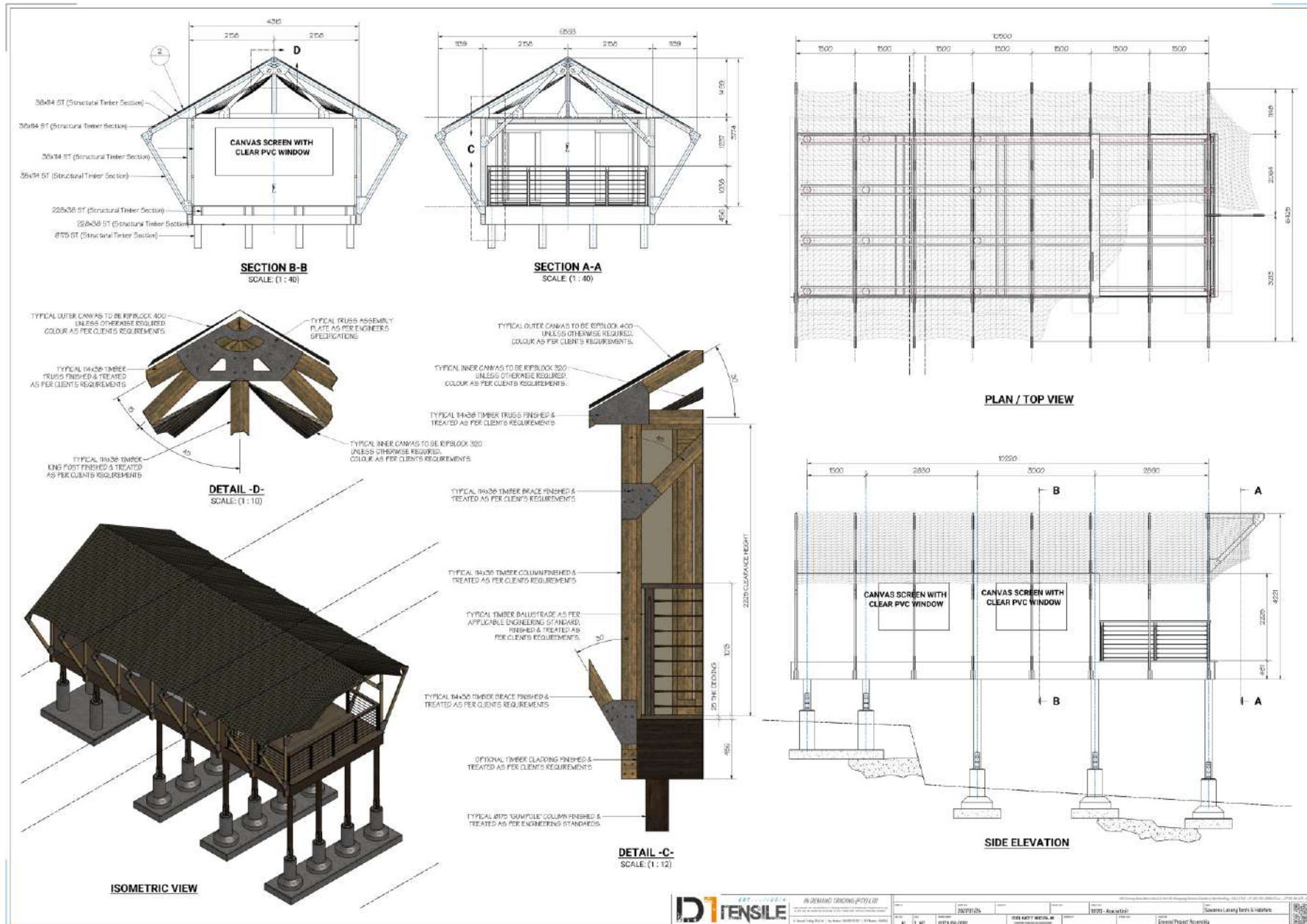
## ACACIA Guest Tent



Living area size:	4.0m x Length 7.5m
Membrane area size:	4.2m x Length 9.5m
Deck Area:	4.2m x 9.5m
Balcony:	13.8m <sup>2</sup>
Frame Material:	Cedarbrook Tenting Canvas/Rip Stop
Membrane material selection:	Outer Roof Rip Stop Inner Cedarbrook Tenting Canvas
Walling:	144km/h
Wind load:	
<a href="https://www.idtcustomawnings.shop/acacia-unit">https://www.idtcustomawnings.shop/acacia-unit</a>	

# SAVANNA Luxury Tents & Habitats

# ACACIA Guest Tent





## SAVANNA Luxury Tents & Habitats



## BUSHWILLOW Guest Tent



Living area size:	Width 10.5m x Length 9.0m
Membrane area size:	Width 10.5m x Length 10.2m
Deck Area:	10.0m x 9.5m:
Balcony:	12.0m <sup>2</sup>
Frame Material:	Cedarbrook Tenting Canvas/Rip Stop
Membrane material selection:	Outer Roof Rip Stop Inner Cedarbrook Tenting Canvas
Walling:	144km/h
Wind load:	
<a href="https://www.idtcustomawnings.shop/bushwillow-unit">https://www.idtcustomawnings.shop/bushwillow-unit</a>	





## SAVANNA Luxury Tents & Habitats



## BAOBAB Guest Tent



Living area size:	Width 5.1m x Length 9.0m
Membrane area size:	Width 5.1m x Length 11.3m
Deck Area:	5.1m x 11.3m:
Balcony:	11.5m <sup>2</sup>
Frame Material:	Cedarbrook Tenting Canvas/Rip Stop
Membrane material selection:	Outer Roof Rip Stop Inner Cedarbrook Tenting Canvas
Walling:	144km/h
Wind load:	

<https://www.idtcustomawnings.shop/baobab-unit>

# SAVANNA Luxury Tents & Habitats

# BAOBAB Guest Tent

**SECTION A-B**  
SCALE: 1/4" = 1'-0"

**SECTION C-C**  
SCALE: 1/4" = 1'-0"

**SECTION D-D**  
SCALE: 1/4" = 1'-0"

**PLAN J, TOP VIEW**  
1/8" = 1'-0"

**PLAN K, TOP VIEW**  
1/8" = 1'-0"

**DETAIL E-1**  
SCALE: 1/2" = 1'-0"

**DETAIL E-2**  
SCALE: 1/2" = 1'-0"

QTY	REV	DATE	BY	CHKD	DESCRIPTION	REVISION	APPROVAL	NO.
1	1	10/27/2023	...	...	Issue Release 01 Assembly			10/27/23
1	1	10/27/2023	...	...	Issue Release 02 Assembly			10/27/23
1	1	10/27/2023	...	...	Issue Release 03 Assembly			10/27/23
1	1	10/27/2023	...	...	Issue Release 04 Assembly			10/27/23
1	1	10/27/2023	...	...	Issue Release 05 Assembly			10/27/23
1	1	10/27/2023	...	...	Issue Release 06 Assembly			10/27/23
1	1	10/27/2023	...	...	Issue Release 07 Assembly			10/27/23
1	1	10/27/2023	...	...	Issue Release 08 Assembly			10/27/23
1	1	10/27/2023	...	...	Issue Release 09 Assembly			10/27/23
1	1	10/27/2023	...	...	Issue Release 10 Assembly			10/27/23
1	1	10/27/2023	...	...	Issue Release 11 Assembly			10/27/23
1	1	10/27/2023	...	...	Issue Release 12 Assembly			10/27/23
1	1	10/27/2023	...	...	Issue Release 13 Assembly			10/27/23
1	1	10/27/2023	...	...	Issue Release 14 Assembly			10/27/23
1	1	10/27/2023	...	...	Issue Release 15 Assembly			10/27/23
1	1	10/27/2023	...	...	Issue Release 16 Assembly			10/27/23
1	1	10/27/2023	...	...	Issue Release 17 Assembly			10/27/23
1	1	10/27/2023	...	...	Issue Release 18 Assembly			10/27/23
1	1	10/27/2023	...	...	Issue Release 19 Assembly			10/27/23
1	1	10/27/2023	...	...	Issue Release 20 Assembly			10/27/23
1	1	10/27/2023	...	...	Issue Release 21 Assembly			10/27/23
1	1	10/27/2023	...	...	Issue Release 22 Assembly			10/27/23
1	1	10/27/2023	...	...	Issue Release 23 Assembly			10/27/23
1	1	10/27/2023	...	...	Issue Release 24 Assembly			10/27/23
1	1	10/27/2023	...	...	Issue Release 25 Assembly			10/27/23
1	1	10/27/2023	...	...	Issue Release 26 Assembly			10/27/23
1	1	10/27/2023	...	...	Issue Release 27 Assembly			10/27/23
1	1	10/27/2023	...	...	Issue Release 28 Assembly			10/27/23
1	1	10/27/2023	...	...	Issue Release 29 Assembly			10/27/23
1	1	10/27/2023	...	...	Issue Release 30 Assembly			10/27/23
1	1	10/27/2023	...	...	Issue Release 31 Assembly			10/27/23
1	1	10/27/2023	...	...	Issue Release 32 Assembly			10/27/23
1	1	10/27/2023	...	...	Issue Release 33 Assembly			10/27/23
1	1	10/27/2023	...	...	Issue Release 34 Assembly			10/27/23
1	1	10/27/2023	...	...	Issue Release 35 Assembly			10/27/23
1	1	10/27/2023	...	...	Issue Release 36 Assembly			10/27/23
1	1	10/27/2023	...	...	Issue Release 37 Assembly			10/27/23
1	1	10/27/2023	...	...	Issue Release 38 Assembly			10/27/23
1	1	10/27/2023	...	...	Issue Release 39 Assembly			10/27/23
1	1	10/27/2023	...	...	Issue Release 40 Assembly			10/27/23
1	1	10/27/2023	...	...	Issue Release 41 Assembly			10/27/23
1	1	10/27/2023	...	...	Issue Release 42 Assembly			10/27/23
1	1	10/27/2023	...	...	Issue Release 43 Assembly			10/27/23
1	1	10/27/2023	...	...	Issue Release 44 Assembly			10/27/23
1	1	10/27/2023	...	...	Issue Release 45 Assembly			10/27/23
1	1	10/27/2023	...	...	Issue Release 46 Assembly			10/27/23
1	1	10/27/2023	...	...	Issue Release 47 Assembly			10/27/23
1	1	10/27/2023	...	...	Issue Release 48 Assembly			10/27/23
1	1	10/27/2023	...	...	Issue Release 49 Assembly			10/27/23
1	1	10/27/2023	...	...	Issue Release 50 Assembly			10/27/23





## SAVANNA Luxury Tents & Habitats



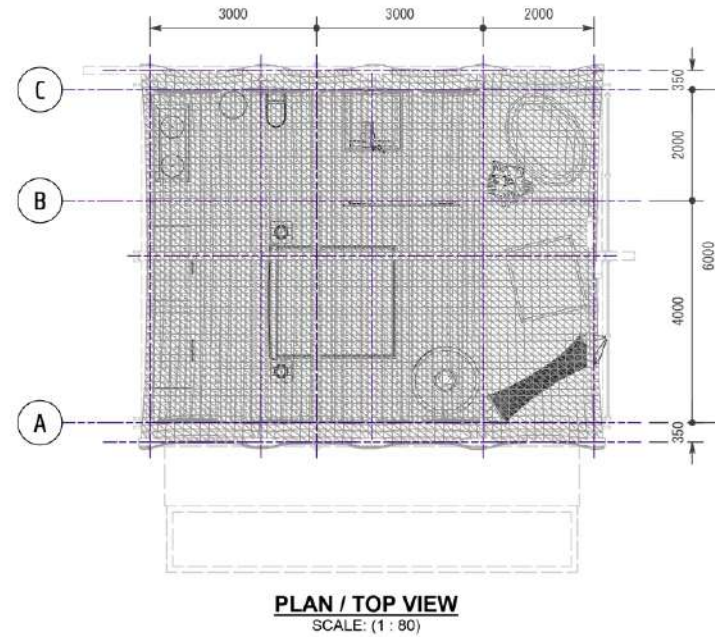
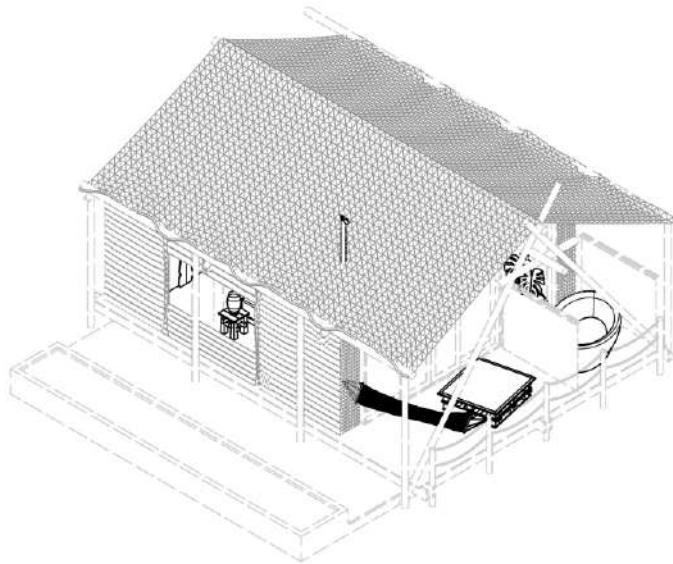
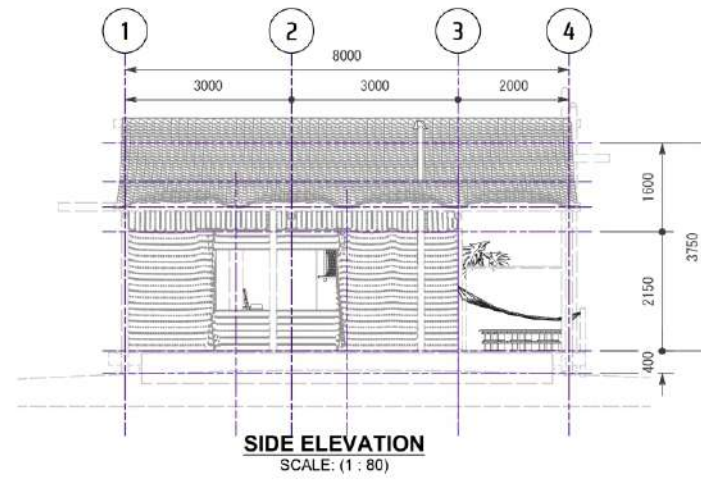
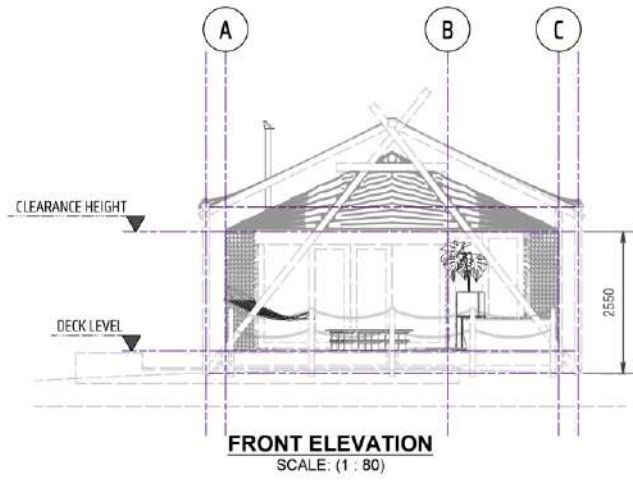
## WHISTLING THORN Guest Tent



Living area size:	Width 6.0m x Length 6.0m
Membrane area size:	Width 7.0m x Length 8.0m
Deck Area:	6.0m x 8.0m
Balcony:	12.0m <sup>2</sup>
Frame Material:	Wood
Membrane material selection:	Outer membrane Rip Stop Inner Cedarbrook Tenting Canvas
Walling:	Rip Stop
Wind load:	144km/h
<a href="https://www.idtcustomawnings.shop/whistlingthorn">https://www.idtcustomawnings.shop/whistlingthorn</a>	

# SAVANNA Luxury Tents & Habitats

# WHISTING THORN Guest Tent

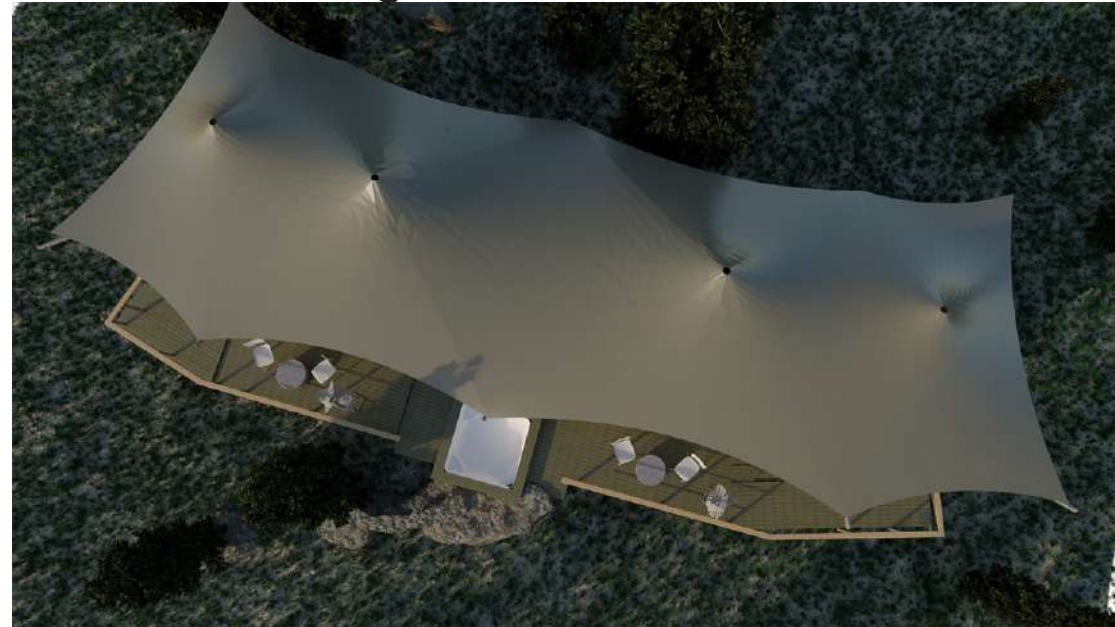




## SAVANNA Luxury Tents & Habitats



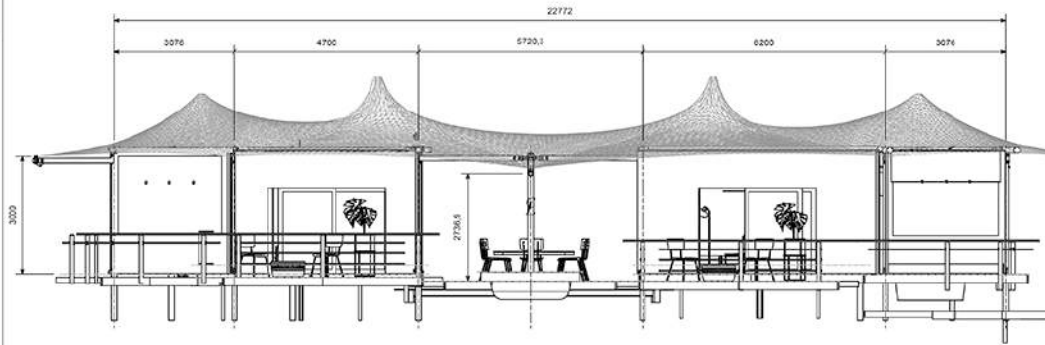
## QUIVER TWIN Guest Tent



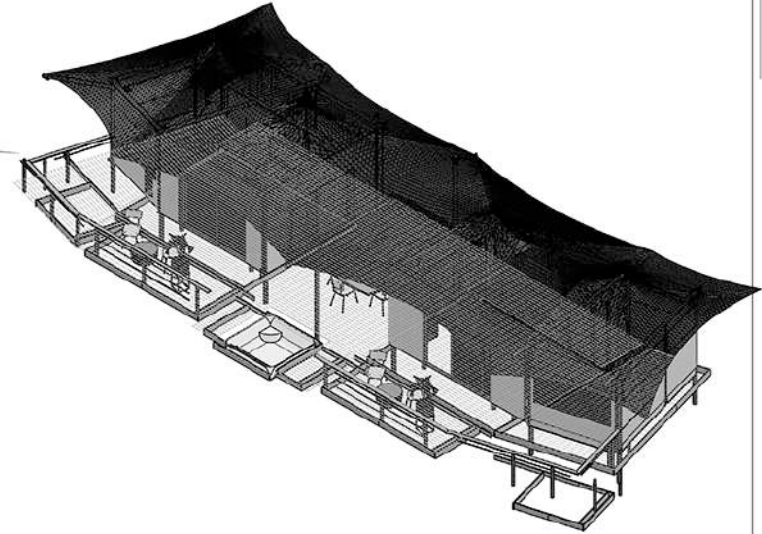
Living area size:	Width 19.0m x Length 5.0m
Membrane area:	Width 25.0m x Length 10.0m
Deck Area:	22.7m x 7.7m
Balcony:	54.0 m <sup>2</sup>
Frame Material:	Timber.
Membrane material selection:	Outer roof Architectural PVC inner Tenting
Walling:	Rip Stop
Wind load:	144km/h
<a href="https://www.idtcustomawnings.shop/quivertwinguestsuite">https://www.idtcustomawnings.shop/quivertwinguestsuite</a>	

# SAVANNA Luxury Tents & Habitats

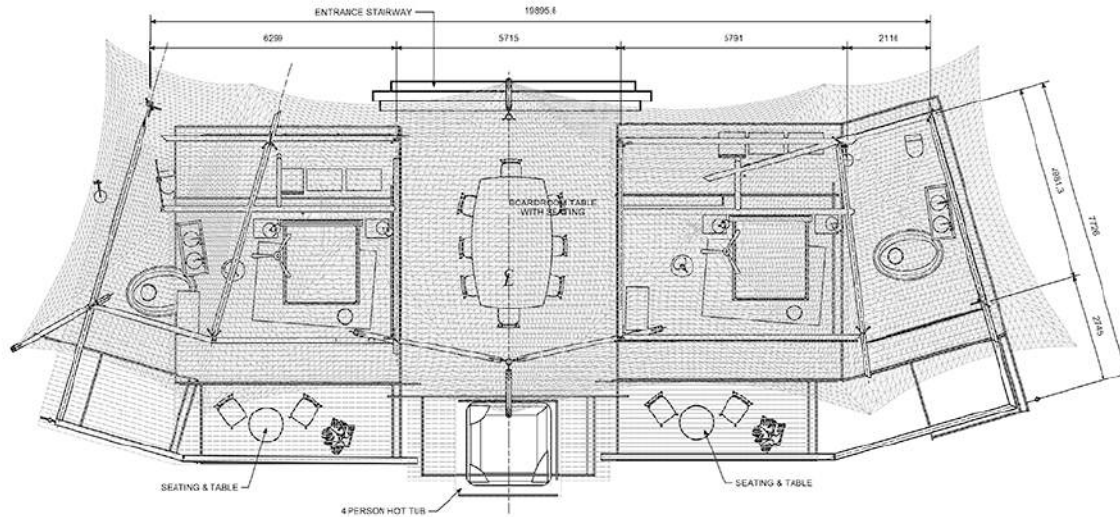
# QUIVER TWIN Guest Tent



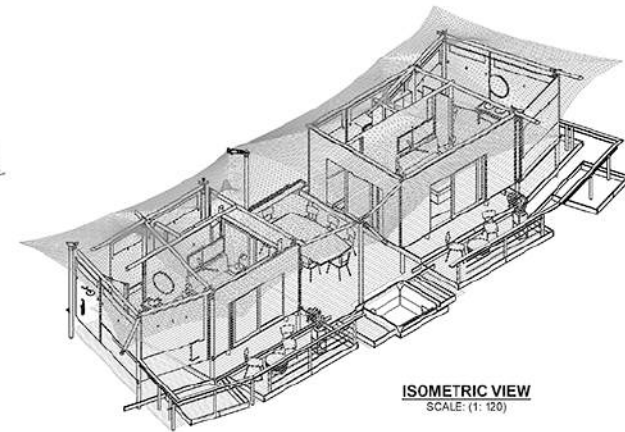
**FRONT VIEW**  
SCALE: (1 : 80)



**SIDE VIEW4**  
SCALE: (1 : 100)



**PLAN / TOP VIEW**  
SCALE: (1 : 80)



**ISOMETRIC VIEW**  
SCALE: (1 : 120)



**SAVANNA**  
LUXURY TENTS & HABITATS

**DI TENSILE**

PROJ: 10016 - Quiver Twin Guest Suite	DATE: 2024-08-14	SCALE: 1:80	10026-GA-001	DO NOT SCALE	Membrane DT Assembly
Paul Jacobs					





## SAVANNA Luxury Tents & Habitats



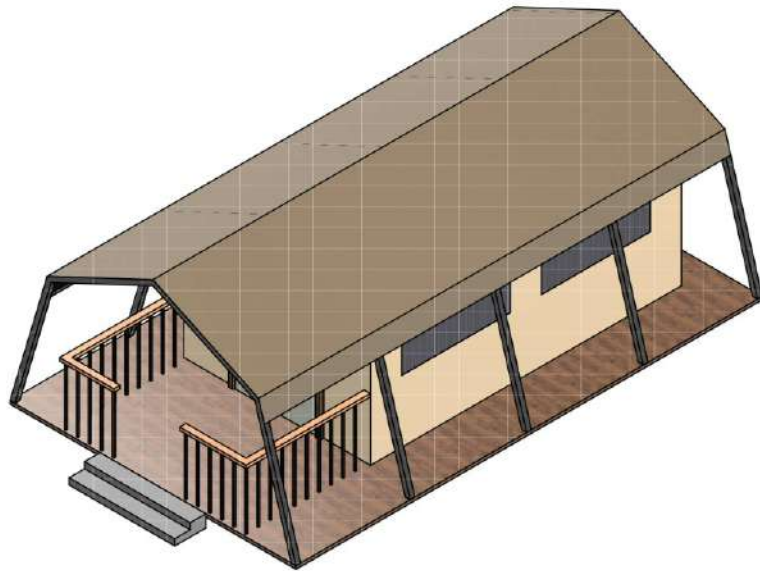
## BUSH BABY Guest Tent



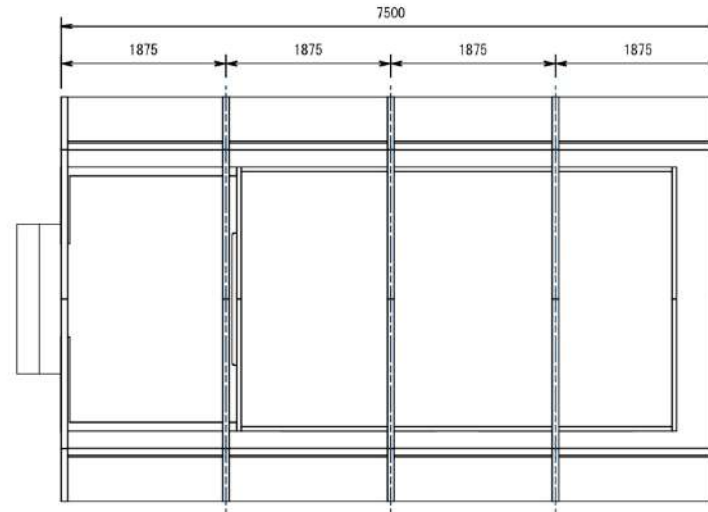
Living area size: Width 3.6m x Length 5.6m  
Membrane area: Width 4.6m x Length 7.5m  
Deck Area: 4.6m x 1.9m  
Balcony: 8.74 m<sup>2</sup>  
Frame Material: Steel.  
Membrane material selection: Outer roof Rip Stop  
inner Rip Stop  
Walling: Rip Stop  
Wind load: 144km/h  
<https://www.idtcustomawnings.shop/bushbaby-guest-tent>

# SAVANNA Luxury Tents & Habitats

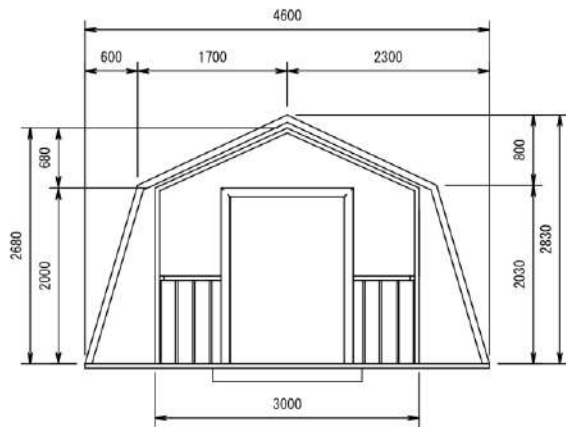
# BUSH BABY Guest Tent



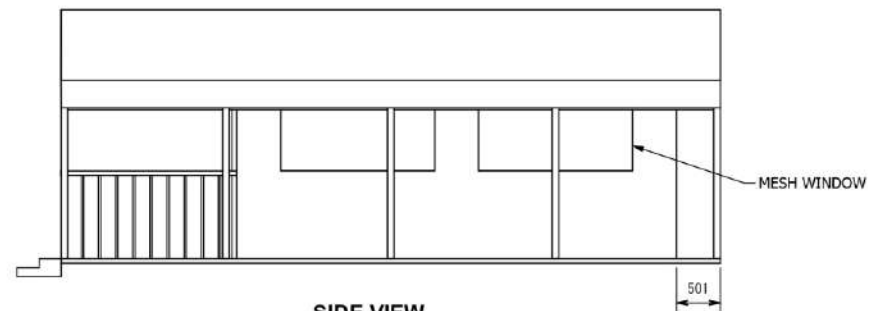
**SIDE VIEW**  
SCALE: (1 : 50)



**TOP VIEW**  
SCALE: (1 : 50)



**FRONT VIEW**  
SCALE: (1 : 50)



**SIDE VIEW**  
SCALE: (1 : 50)



**IN DEMAND TRADING (PTY) LTD**  
THE CONTENT OF THIS DRAWING IS THE SOLE PROPERTY OF INDEMAND TRADING (PTY) LTD. IT SHALL NOT BE LOANED OR PASSED TO ANY THIRD PARTY WITHOUT WRITTEN CONSENT.  
 © In Demand Trading (Pty) Ltd | Reg Number: 2014/191352/07 | VAT Number: 958276

DESIGNED BY: **Sandor Dezes Balazs**  
 DRAWN BY: \_\_\_\_\_  
 CHECKED BY: \_\_\_\_\_  
 PROJECT NO: \_\_\_\_\_  
 SHEET NO: **A3** | SCALE: **1 : 50** | DRAWING NO: **10002-SA-0003**

**DO NOT SCALE**  
IF ANYTHING IS UNCLEAR, GET CLARIFICATIONS!

283 Honeydew West Road | Unit 19, Stepping Stones Garden | Northridge, 2162 | Tel: +27 (11) 794-1858 | Fax: +27 (11) 794-1859





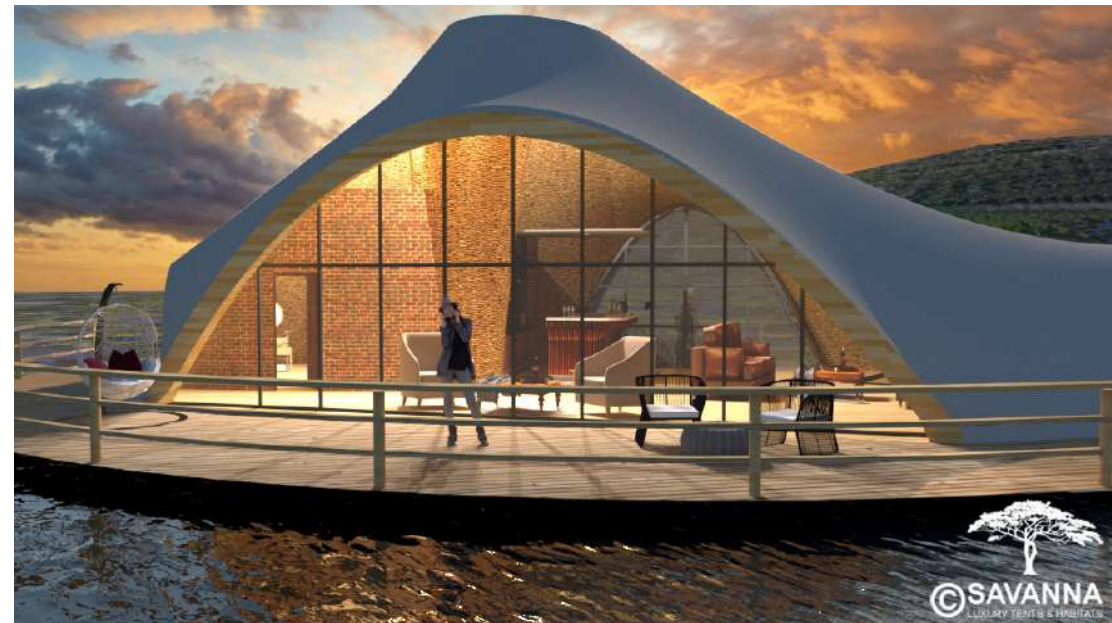
**SAVANNA** Luxury Tents & Habitats

**GUEST UNITS**  
**(Steel Frames & Solid Walls)**

## SAVANNA Luxury Tents & Habitats



## STUDIO ELEVATED Guest Unit

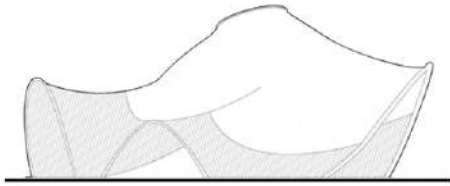


190 m<sup>2</sup>  
190 m<sup>2</sup>  
80 m<sup>2</sup>  
30 m<sup>2</sup>  
inner walls rattan mat, frame steel coated  
outer roof Verseidag 1015/903  
Rattan matting, Knauf insulation  
144km/h

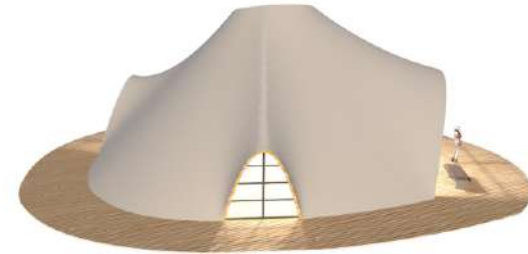


# SAVANNA Luxury Tents & Habitats

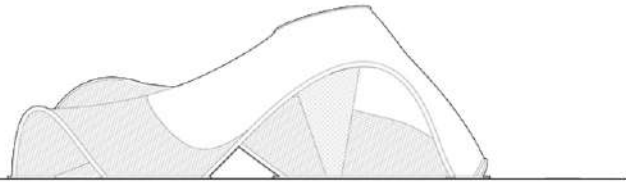
# STUDIO Guest Unit



CONCEPT 001



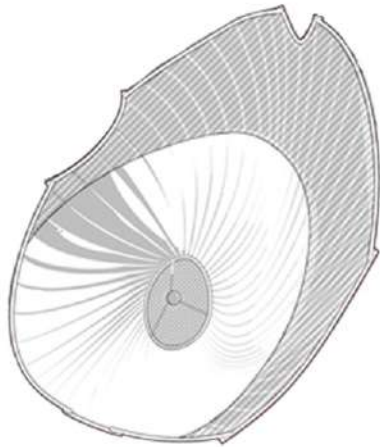
CONCEPT 007



CONCEPT 002



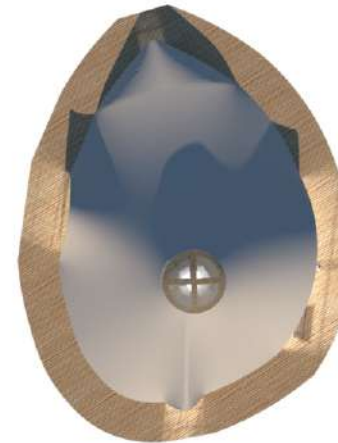
CONCEPT 006



CONCEPT 003



CONCEPT 004



CONCEPT 005



IN DEMAND TRADING (PTY) LTD

THE CONTENT OF THIS DRAWING IS THE SOLE PROPERTY OF IN DEMAND TRADING (PTY) LTD & MAY NOT BE COPIED OR DISCLOSED TO ANY THIRD PARTY WITHOUT WRITTEN CONSENT

In Demand Trading (Pty) Ltd | Reg Number: 2014/011111/07 | VAT Number: 4548114

NAME OF PROJECT	DATE	SCALE	PROJECT NO	PROJECT NAME	CLIENT
Marc du Plessis				10015 SAVANNA 6 STAR LODGE MARA	
DATE	SCALE	PROJECT NO	PROJECT NAME	CLIENT	
A3	1:80	10015-PA-001	DO NOT SCALE		

291 Maropengatla Wood Road / Unit 19, Sleeping Sitons, Gardens / Northridge, 2162 / Tel: +27 (0) 761-1888 / Fax: +27 (0) 86-625-4500



## SAVANNA Luxury Tents & Habitats



## STUDIO ELEVATED Guest Unit



Living area size:	Width 4.5m x Length 4.5m
Membrane area	Width 6.0m x Length 6.0m
Deck Area:	4.5m x 6.5m
Balcony:	5.4 m <sup>2</sup>
Frame Material:	Universal Ibeams and CHS Tubing.
Membrane material selection:	Outer roof Ferrari 402 Inner Thermoflex
Walling:	Fibre Cement board with High Density Polyurethane Core
Wind load:	144km/h
	<a href="https://www.idtcustomawnings.shop/studioguestsuite">https://www.idtcustomawnings.shop/studioguestsuite</a>





## SAVANNA Luxury Tents & Habitats



## STUDIO ELEVATED Guest Unit



Living area size: Width 5.6m x Length 12.89m  
Membrane area: Width 10.0m x Length 17.0m  
Deck Area: 10.0m x 24.0m  
Balcony: 42 m<sup>2</sup>  
Frame Material: Universal Ibeams and CHS Tubing.  
Membrane material selection: Outer roof Ferrari 402  
Inner Thermoflex  
Walling: Fibre Cement board with High Density  
Polyurethane Core  
Wind load: 144km/h  
<https://www.idtcustomawnings.shop/deluxguestsuite>





## SAVANNA Luxury Tents & Habitats



## FAMILY Guest Unit

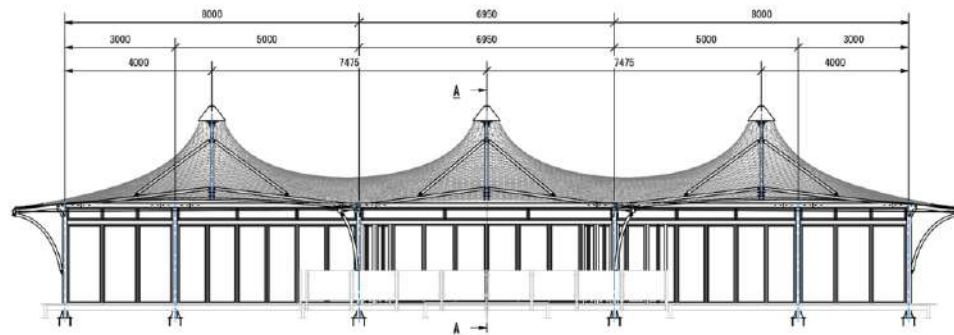


Living area size:	Width 5.1m x Length 22.9m
Membrane area	Width 7.6m x Length 25.5m
Deck Area:	18.0m x 26.0m
Balcony:	81 m <sup>2</sup>
Frame Material:	SHS Tubing.
Membrane material selection:	Outer roof Ferrari 402 Inner Thermoflex
Walling:	Fibre Cement board with High Density Polyurethane Core Glass SlidingS Doors
Wind load:	144km/h
	<a href="https://www.idtcustomawnings.shop/family-suite">https://www.idtcustomawnings.shop/family-suite</a>

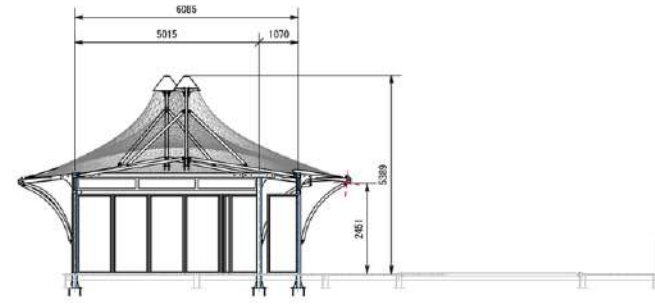


# SAVANNA Luxury Tents & Habitats

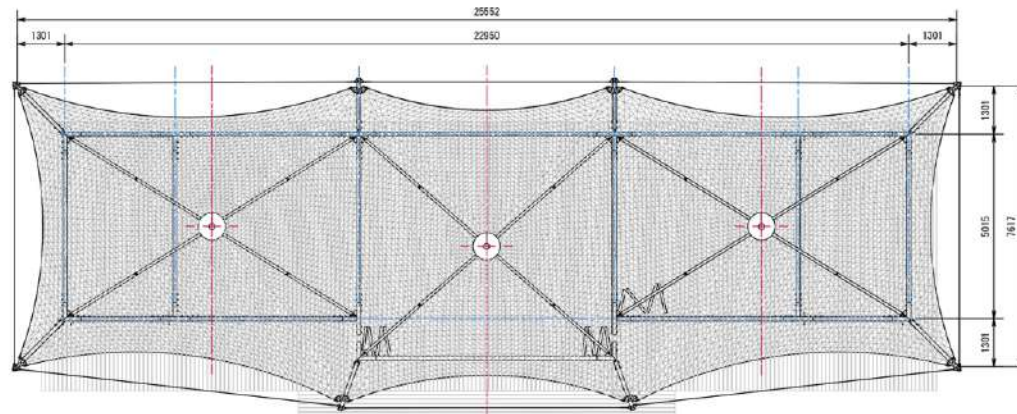
# FAMILY Guest Unit



FRONT ELEVATION



SECTION A-A  
SCALE: (1 : 85)



PLAN / TOP VIEW



ISOMETRIC VIEW



**SAVANNA** Luxury Tents & Habitats

**MAIN AREAS**  
**(Canvas Walls)**



**SAVANNA** Luxury Tents & Habitats

**MAIN AREA** 40 Pax

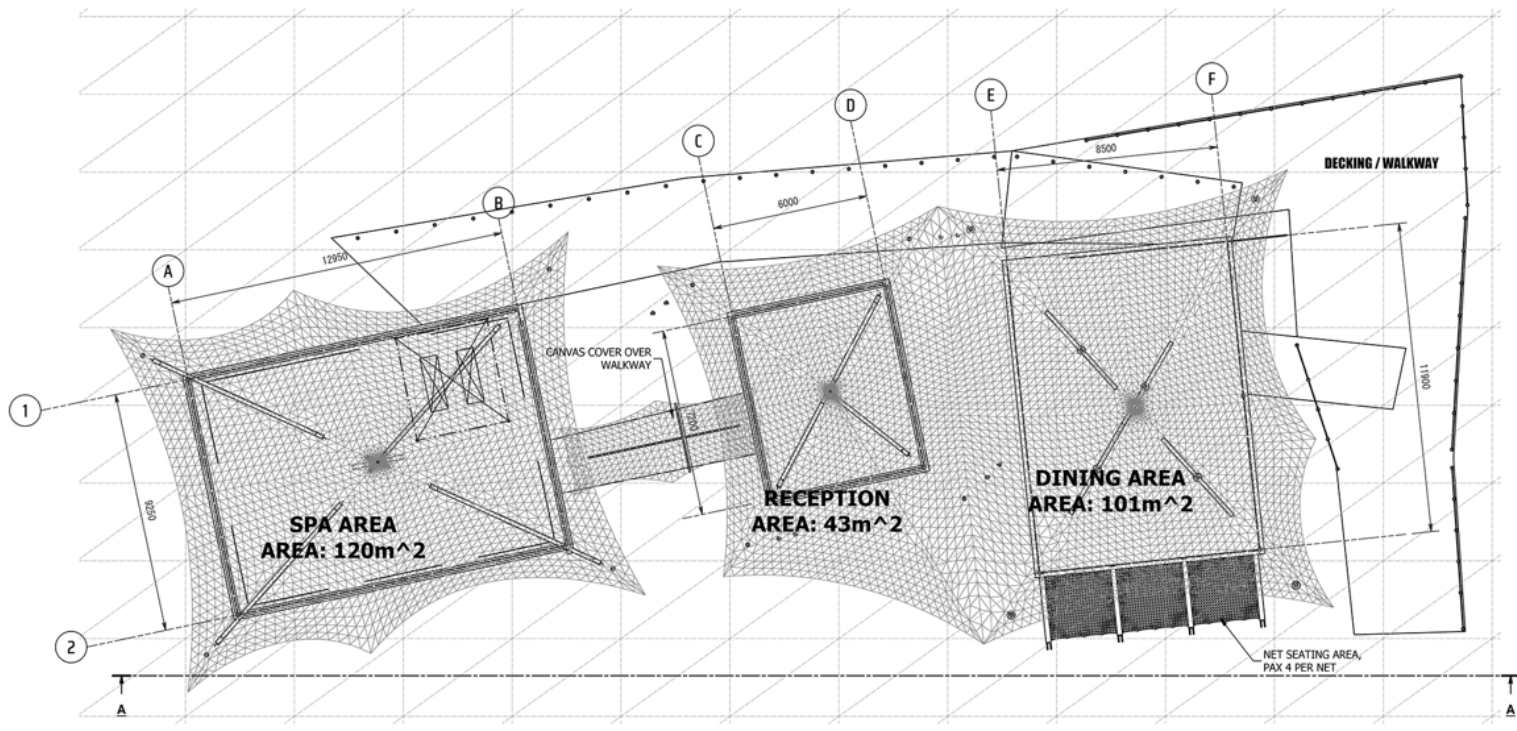
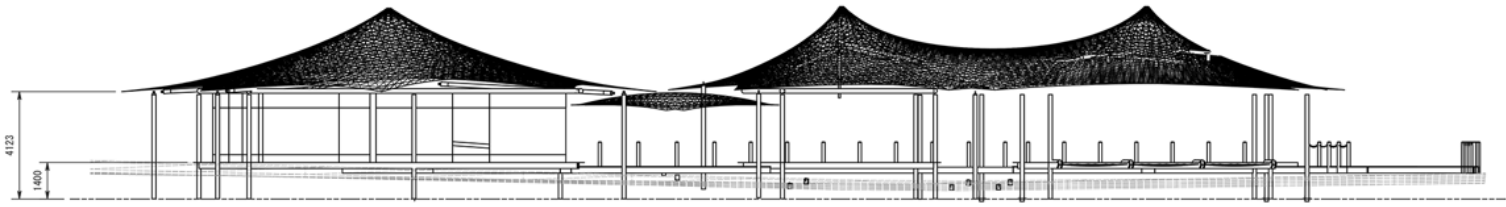


Main Area 40 Pax - SPA, Dining Room, Reception



# SAVANNA Luxury Tents & Habitats

# MAIN AREA 40 Pax



PLAN / TOP VIEW  
SCALE: (1 : 120)





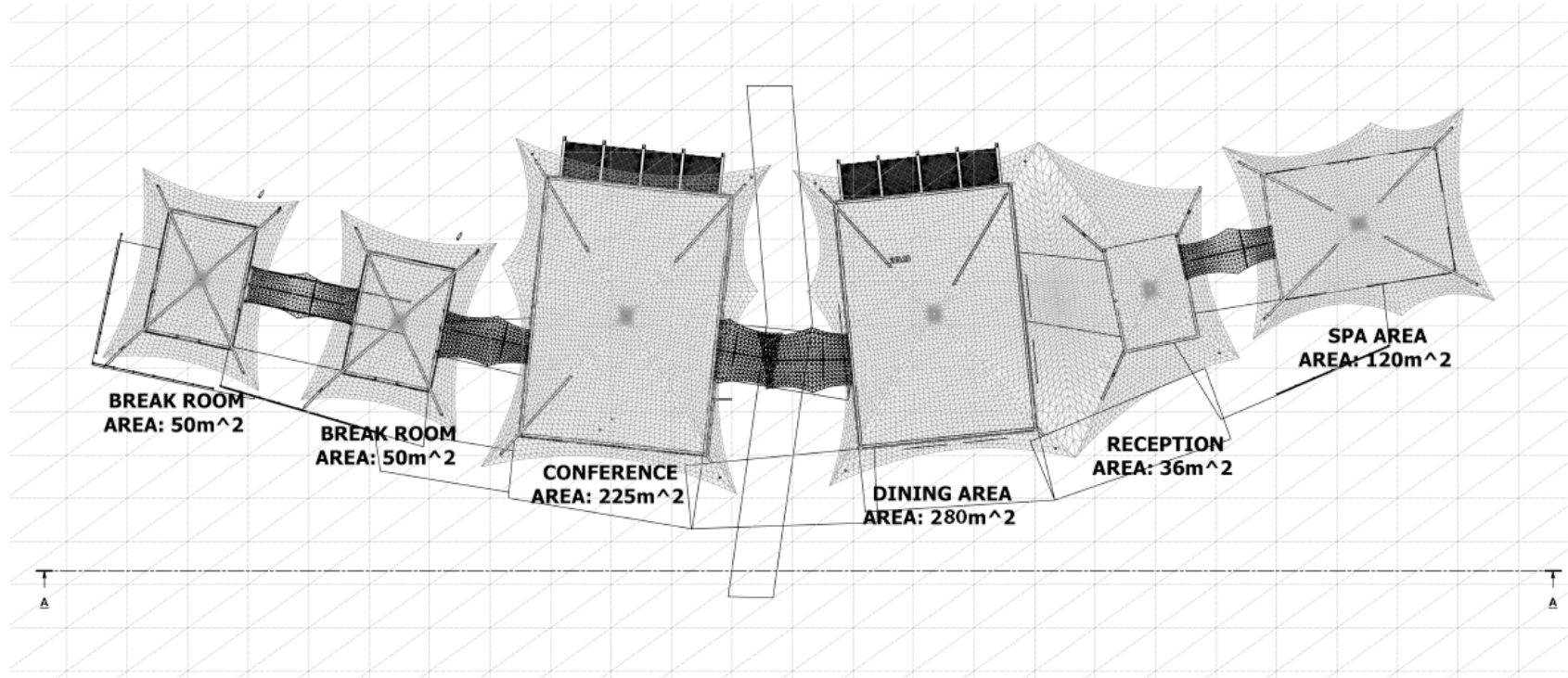
**SAVANNA** Luxury Tents & Habitats

**MAIN AREA** 150 Pax

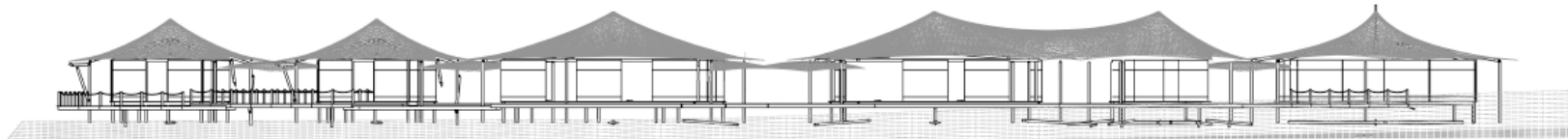


Main Area 100 Pax - SPA, Dining Room, Reception, Conference & 2 Break Away Room





**PLAN / TOP VIEW**  
SCALE: (1 : 200)



**SECTION A-A**  
SCALE: (1 : 200)







# SAVANNA Luxury Tents & Habitats

# MAIN AREA 100 Pax





**EXAMPLES**

# SAVANNA Luxury Tents & Habitats





# SAVANNA Luxury Tents & Habitats





# SAVANNA Luxury Tents & Habitats





**SAVANNA** Luxury Tents & Habitats



**SAVANNA** Luxury Tents & Habitats

# **FACILITIES TENTS**



# SAVANNA Luxury Tents & Habitats



**SAVANNA** Luxury Tents & Habitats





**SAVANNA** Luxury Tents & Habitats

# **AUXILIARY SERVICES**

**SAVANNA** Luxury Tents & Habitats



Borehole and water filtration





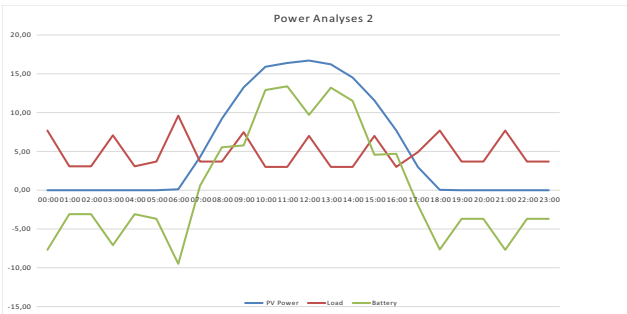
# SAVANNA Luxury Tents & Habitats

Solar Power and back up power

## Power calculation

15-Sep

#	Description	Peak power (kW)	Consumption per day (kWh)	Units required	Total peak power (kW)	Utilization profile	Total consumption per day (kWh)
1	Standard Guest Tents 20 off	10	25	20	200	15%	1800
2	Staff accommodation	20	45	3	60	30%	3240
3	Reception area	2,5	10	1	2,5	30%	240
4	Spa	8	15	1	8	35%	360
5	Bar/social area	8	45	1	8	10%	1080
6	Restaurant/Kitchen including cool room	15	45	1	15	25%	1080
7	Laundry & housekeeping	3,5	22	1	3,5	25%	528
8	Engineering Workshop & CCTV	2,5	10	1	2,5	10%	240
9	Water Filtration	15	150	1	15	20%	3600
10	Waste water treatment	10	40	1	10	15%	960



Adjusted peak demand per day	259,6	kW	324,5	kVA
Total power required per day	13128	kWh	16410	kVA
Proposed solar array in kW			972	kW
Power delivered by solar array	4376	kWh	5470	kVA
Battery storage required			973,5	kVA
Proposed generator required			389,4	kW



# SAVANNA Luxury Tents & Habitats

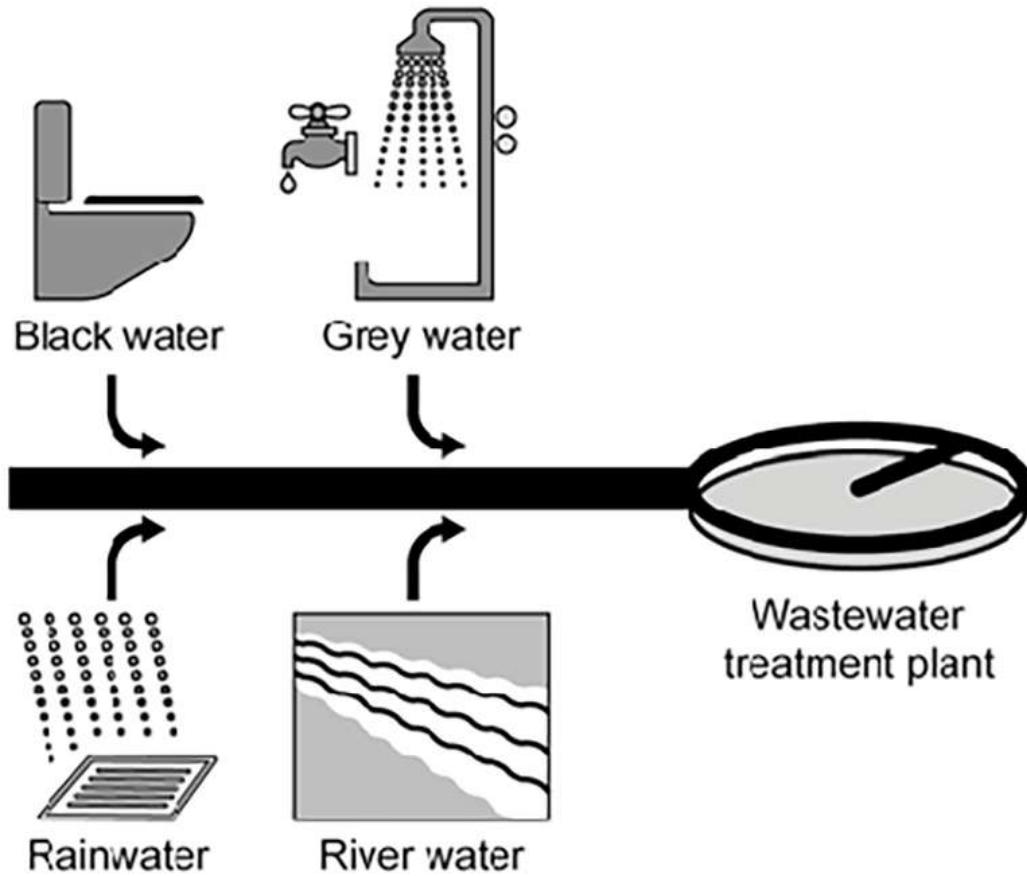
Desalination





# SAVANNA Luxury Tents & Habitats

## Waste water management



idtcustomawnings.com/glamping  
sales@idtcustomawnings.com  
+27 (0)11 791 1888



click icon  
selected  
to launch